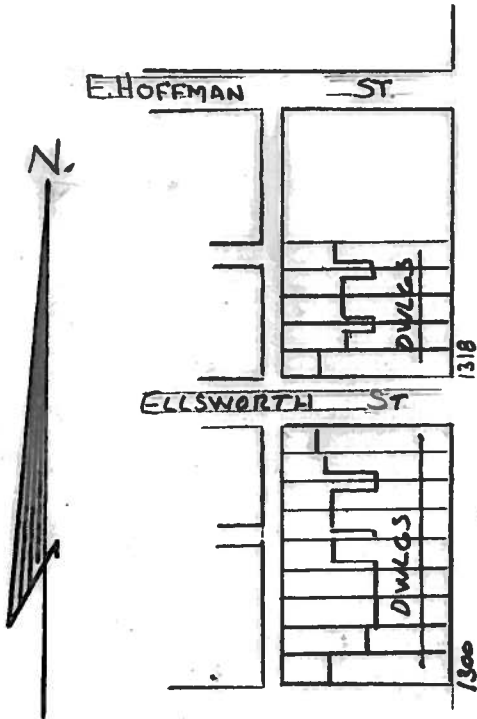
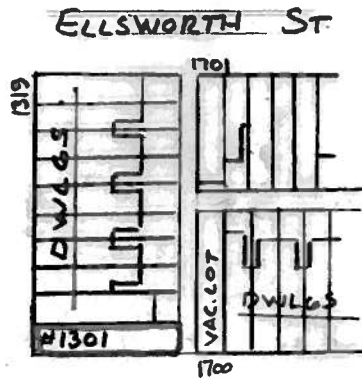


SHEET NO. 47 OF THE ZONING DISTRICT MAPS OF ARTICLE 30 OF THE BALTIMORE CITY CODE, 1966 EDITION, AS AMENDED BY ORDINANCE NO. 1051 APPROVED APRIL 20, 1971 TITLED "ZONING ORDINANCE."



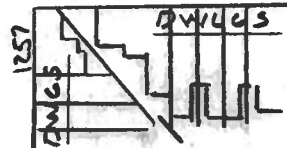
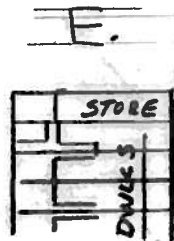
BROADWAY

R-8



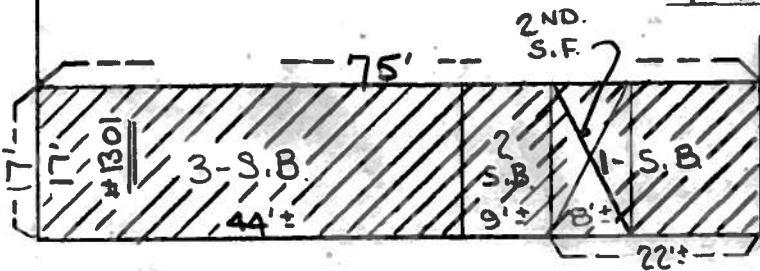
SCALE: 1"=100'

R-8



CONDITIONAL USE: AREA OUTLINED IN RED TO BE USED FOR 2 DWELLING UNITS.

N. BROADWAY

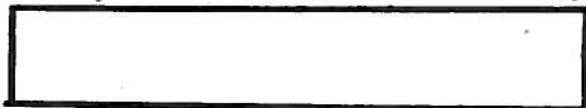


14' AL

SCALE: 1"=20'

E. PRESTON ST

FOR:  
AB ASSOCIATES  
% AL. BARRY  
ONE SOUTH ST. - SUITE 1150  
BALTIMORE, MD. 21202



MAYOR



PRESIDENT CITY COUNCIL

ATS