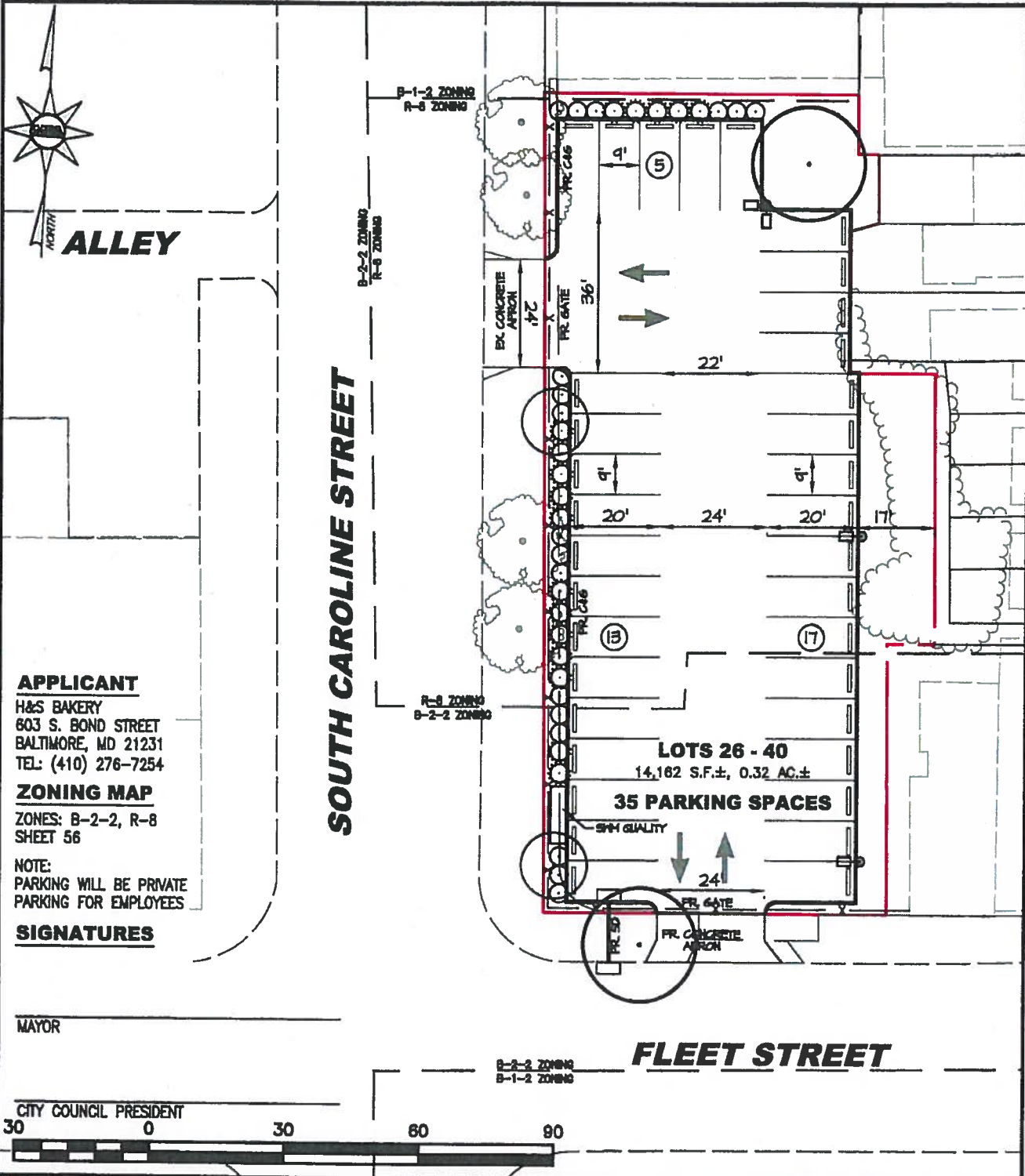


P:\12481\Planning\Plot\12481-Lot X Parking Exhibit-D.dwg, 11/24/2015 2:11:15 PM, JSharon,



**APPLICANT**  
 H&S BAKERY  
 603 S. BOND STREET  
 BALTIMORE, MD 21231  
 TEL: (410) 276-7254

**ZONING MAP**  
 ZONES: B-2-2, R-8  
 SHEET 56

**NOTE:**  
 PARKING WILL BE PRIVATE  
 PARKING FOR EMPLOYEES

**SIGNATURES**

\_\_\_\_\_  
 MAYOR

\_\_\_\_\_  
 CITY COUNCIL PRESIDENT



**MORRIS & RITCHIE ASSOCIATES, INC.**  
 ENGINEERS, ARCHITECTS, PLANNERS, SURVEYORS AND LANDSCAPE ARCHITECTS  
 1220-C EAST JOPPA ROAD, SUITE 505  
 TOWSON, MARYLAND 21286  
 (410) 821-1890  
 FAX: (410) 821-1748  
 MRAGTA.COM

**H&S BAKERY**  
**LOTS 26 - 40**  
**EMPLOYEE PARKING LOT**  
 WARD 03, SECTION 7, BLOCK 1444  
 BALTIMORE, MARYLAND

SCALE: 1" = 30'	DATE: 11-24-2015	DRAWN BY: NR	DESIGN BY: JTS	REVIEW BY: JTS	JOB NO.: 12481
-----------------	------------------	--------------	----------------	----------------	----------------

602