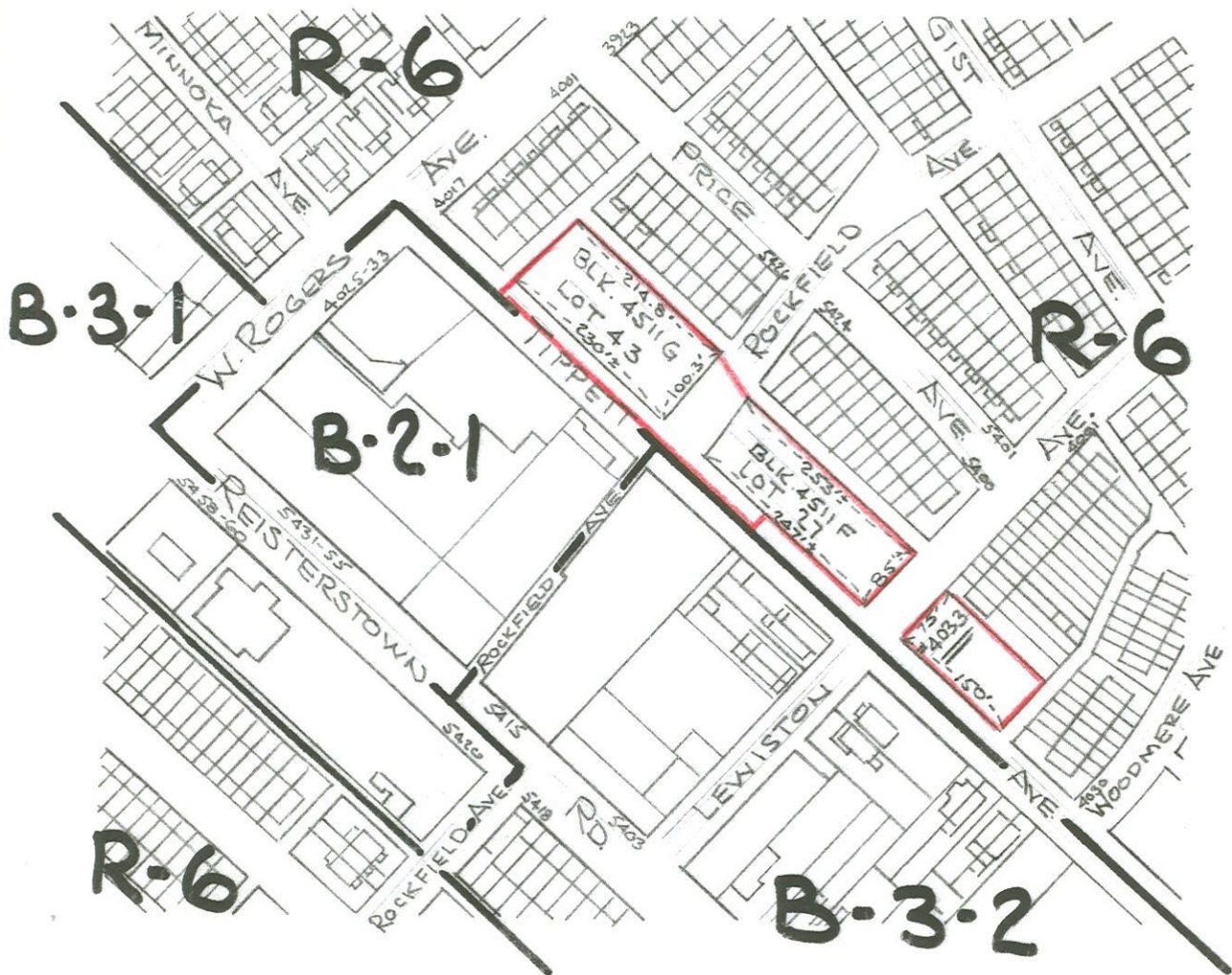


SHEET # 12 OF THE ZONING DISTRICT MAPS OF ARTICLE 30 OF THE BALTIMORE CITY CODE, 1966 EDITION, AS AMENDED BY ORDINANCE NO. 1051 APPROVED APRIL 20, 1971 TITLED "ZONING ORDINANCE."



CONDITIONAL USE:

AREAS OUTLINED IN RED TO BE USED FOR OPEN OFF-STREET PARKING (INCLUDING DRIVING TEST AREA)

SCALE: 1" = 200'

FOR:

STANLEY FINE

25 S. CHARLE ST. - SUITE 2115

BALTIMORE, MD. 21201



MAYOR



PRESIDENT CITY COUNCIL