

BGE STREET LIGHTING PRODUCTIVITY ANALYSIS

DEPARTMENT OF TRANSPORTATION
MAINTENANCE DIVISION
ALFRED H. FOXX, DIRECTOR
RICHARD HOOPER, CHIEF



BGE STREET LIGHTING PRODUCTIVITY WORKING TOGETHER

- **COMPARE DAILY SCHEDULES OF WORK TO BE PERFORMED BY BGE WITH 3-1-1**
- **REVIEW AND REQUEST SPECIFIC WORK TO BE EXPEDITED**
- **HOLD BI-WEEKLY MEETINGS WITH BGE TO FURTHER COMMUNICATIONS ON PROCESSES**
- **RECEIVE DAILY LOGS OF PENDING, NEW AND COMPLETED ASSIGNMENTS**



BGE STREET LIGHTING PRODUCTIVITY

WORKING TOGETHER

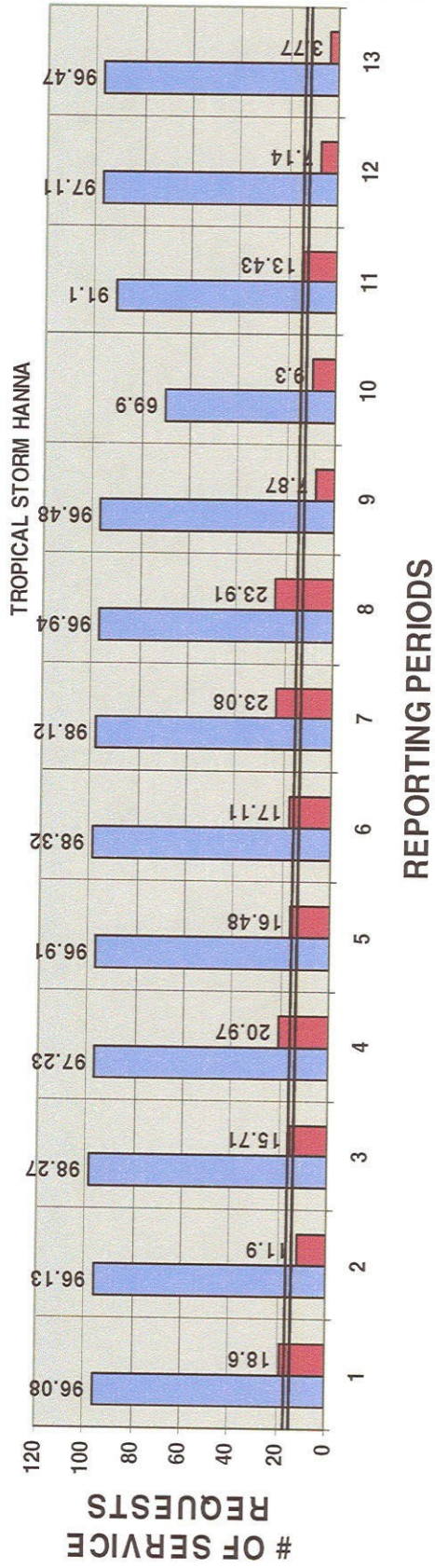
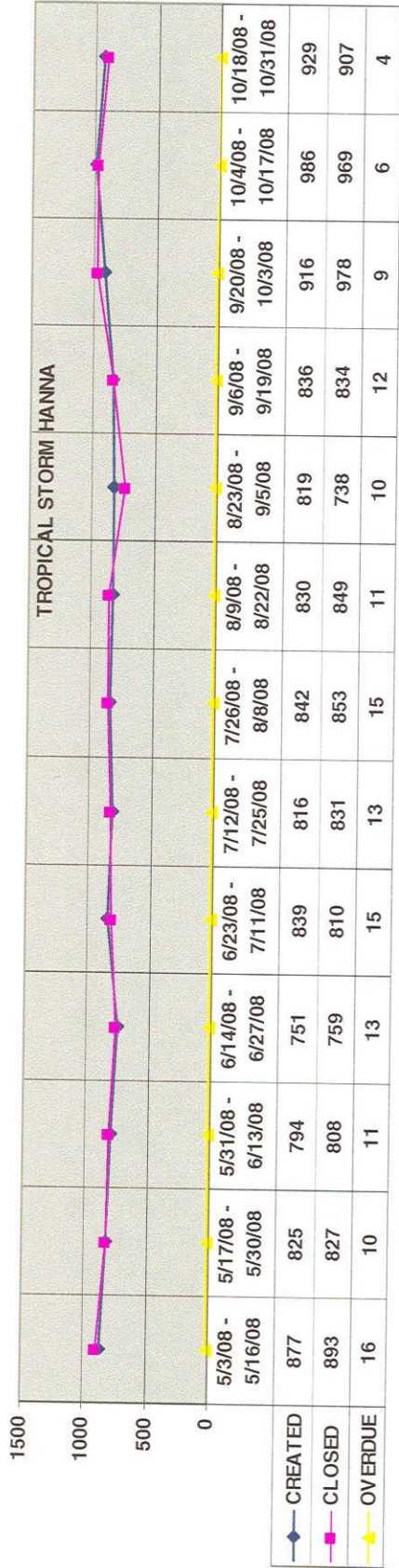
3	Today's Date											General Foreman	
4	11/7/2008											Paul Hamlin & Steve Didier	
5												443-250-1261, 410-977-3712	
6													
7													
8		Address	CREW LEADER	JOB ORDER	Map & Grid	Division	VMSS	Grid #	Pole #	Received	Days Old	Completed	Job Details
9		6727 ESSEX RD	ALSTON	5	B33E6	OL6	1788442	1030740	7057	11/4/08	3		
10		6000 JOHNMYCARE RD	ALSTON	2	B33E12	OL6	1788767	3010720	7106	11/5/08	2		
11		3TH ST	APLEGATE	1	PG3H1	OL4	1788169	3200930	????	11/3/08	4		ongoing, IWT, Applegate
12		15612 EVERGLADE LN	APLEGATE	2	PG1E7	OL4	1788491	3250740	6256	11/4/08	3		
13		1501 NORTHCOTE LN	APLEGATE	3	PG1E6	OL4	1787956	3250710	7045	11/3/08	4		
14		2700 ARDEN FOREST LN	APLEGATE	4	PG1F9	OL4	1787958	3260630	7421	11/3/08	4		
15		5313 EASTCUFF DR	BRUNE	3	BC26E12	OL6	1788753	1050310	7023	11/5/08	2		
16		1000 MUFULTON AV	BRUNE	4	BC34G11	OL6	1788747	1010230	7383	11/5/08	2		
17		228 S EDEN ST	FELECIANO	2	BC35E13	OL5	1788440	4010140	7131	11/4/08	3		ongoing, IWT, Feliciano
18		301 E EAGER ST	BRUNE	5	BC35E11	OL5	1788430	2010140	7536	11/4/08	3		ongoing, IWT, Feliciano
14	Navigation icons	Pending / January 2008 / February 2008 / March 2008 / April 2008 / MAY 2008 / JUNE 2008 / July 2008 / August 2008 / Sept. 2008 / Oct /											



DAILY BGE LOG OF CABLE FAULTS USED TO COMPARE WITH 3-1-1

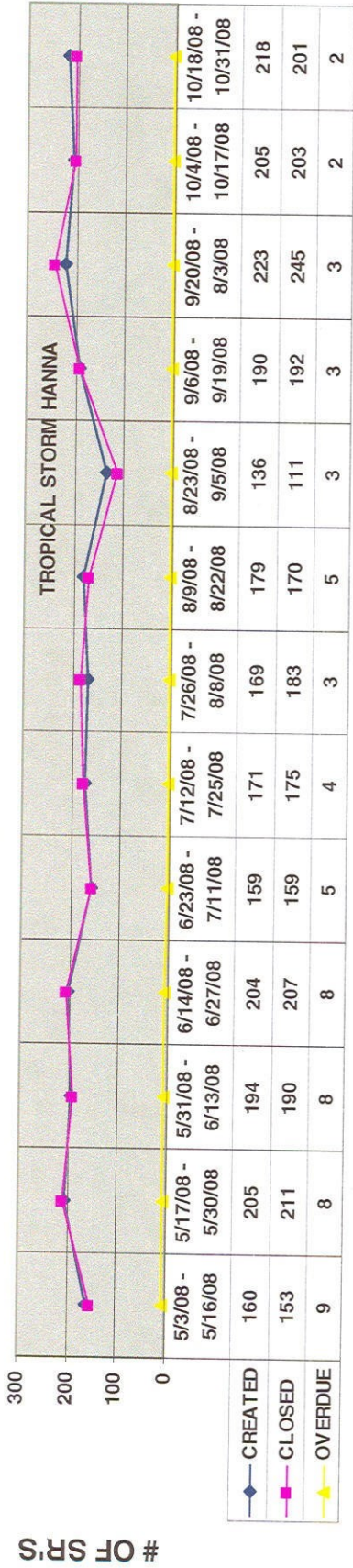


BGE STREET LIGHTING PRODUCTIVITY ANALYSIS (STREET LIGHTS)

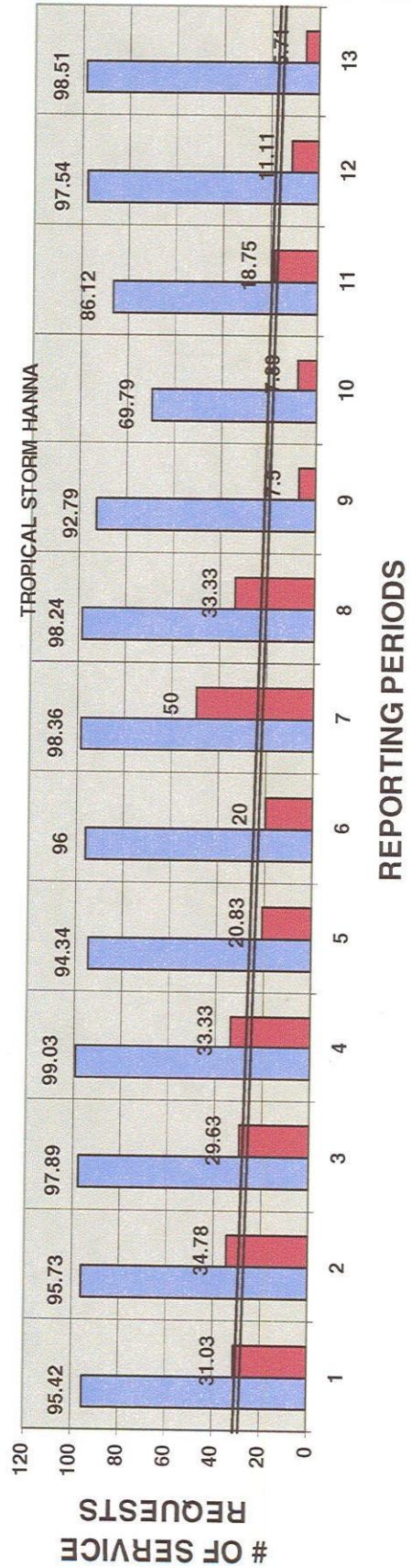


Based on Cititrack statistics, BGE shows a reduction in overdue Service Requests for Street Lights Out from 16.8% prior to the FY '09 to 13.6% since July, 2008.

BGE STREET LIGHTING PERFORMANCE ANALYSIS (STREET LIGHTS - REAR)



REPORTING PERIODS



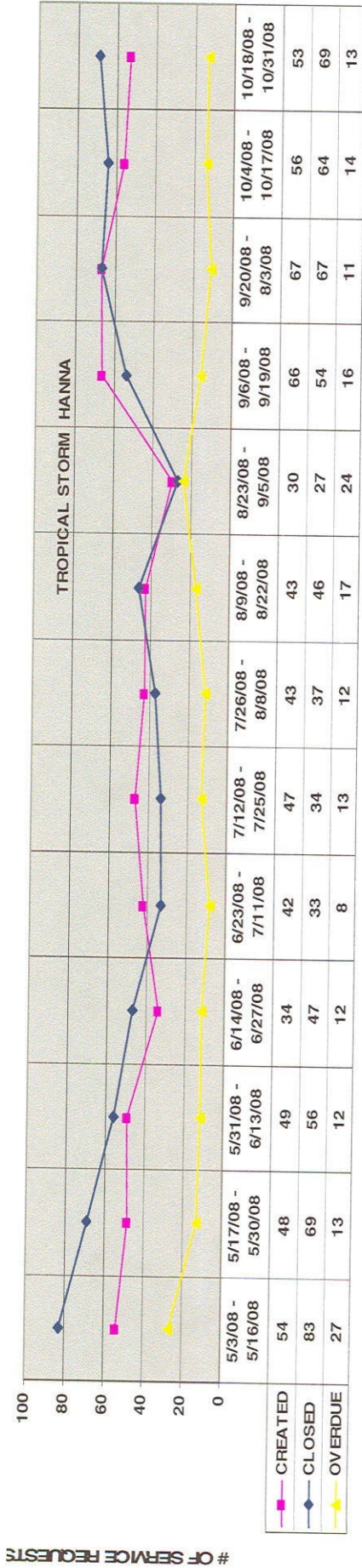
REPORTING PERIODS



Based on Cititrack statistics, BGE shows a reduction in overdue Service Requests for Street Lights Out (Rear) from 32.26% prior to the FY '09 to 18.58% since July, 2008.

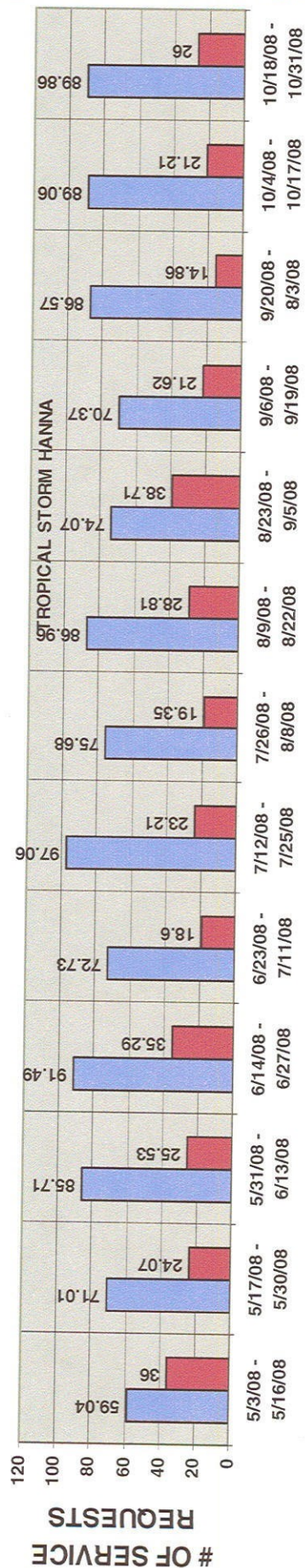
BGE STREET LIGHTING PRODUCTIVITY REPORT

CABLE FAULTS



REPORTING PERIODS

■ CREATED ■ CLOSED ■ OVERDUE



REPORTING PERIODS

■ CLOSED IN TIME % ■ OVERDUE %



Based on Cititrack statistics, BGE shows a reduction in overdue Service Requests for Street Lights Cable Faults from 30.22% prior to the FY '09 to 23.6% since July, 2008.