



Signage Plan
Baltimore, MD

cima
building brands together

420

PROPOSED SIGNS

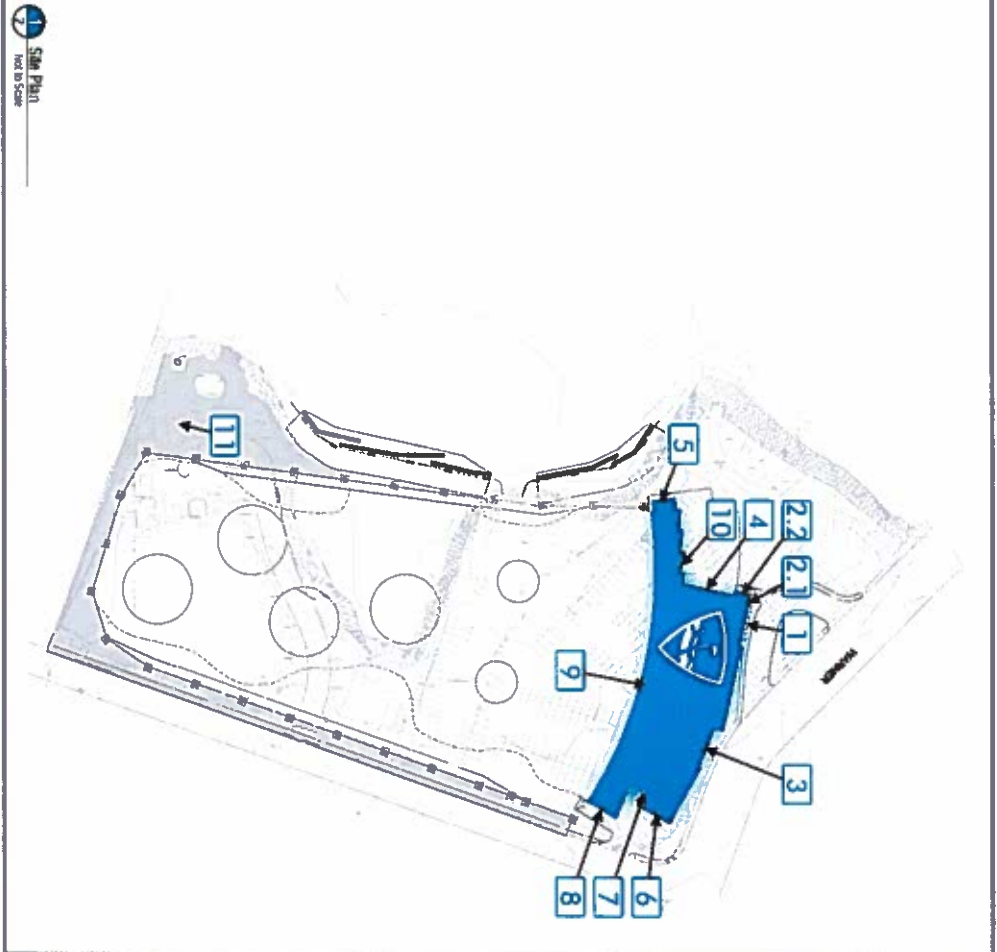
Parcel	1	5	180	180	08.2	X
1	42" TOPGOLF Channel Letters On Canopy	1	180	180	211.4	
2	24" Topgolf Logo Channel On Front Glass Facade & Canopy	1	180	180	208	Room Section Adjacent Front Facade
3	34" Topgolf Logo Channel On Front Glass Facade & Canopy	1	180	180	674.5	
4	32" TOPGOLF Channel Letters on Wall	1	180	180	58.7	
5	180" Channel letters w/ Logo stacked on Glass Facade	1	180	180	203.9	
6	210.5" Topgolf Logo Cabinet on Wall	1	100	180	352.69	
7	51" Topgolf Logo Cabinet on Wall	1	110	180	171.6	
8	180" Topgolf Logo Cabinet on Glass Facade	1	180	180	283.9	
9	120" TOPGOLF Channel letters on roof	1	12	180	768.1	Double Sided
10	108" TOPGOLF w/ Logo social Media Storage on Wall	1	13	180	70.9	
11	77' Freestanding Plan Signage	1	14	180	640.2	

SYMBOLS KEY

Symbol	Description	Notes
[A]	120 VAC Junction Box	N/A
[W]	LED Power Supply	N/A
[B]	Backlighting Field	N/A
[S]	Special Custom Angles	Notes
[X]	Access Panel - Field Out	N/A
[Y]	Additional Interim Backlighting	N/A
[Z]	Remove	N/A
[R]	Retain	N/A
[Q]	Reface	N/A

REVISIONS

Revised	Date	Description	By	Sheet
1				
2				
3				
4				
5				
6				
7				
8				
9				
10				
11				
12				
13				
14				



Additional Notes

1. (Civil) Amend existing sign criteria to include all drawings.
2. C.C. Topgolf and its associated sign responsible to obtain permits for all signs on this project.

1. If there are any changes and/or discrepancies in drawings, engineering, or electrical drawings, please contact:

Project Contact: [Name] @ [Company]
 121 New Britain Blvd
 Chalfont, PA 18918
 215.286.0513

2. Gary Winicki and [Name] @ [Company]
 121 New Britain Blvd
 Chalfont, PA 18918
 215.286.0513



Cima Network, Inc.
 121 New Britain Blvd
 Chalfont, PA 18914
 Office: 267.308.0515
 Fax: 267.200.0517
 www.cimainetwork.com

This is an original, unaltered and drawing created by Cima Network, Inc. and is the property of Cima Network, Inc. All rights reserved. No part of this drawing may be reproduced without the prior written permission of Cima Network, Inc. All other trademarks and registered service marks are the property of their respective owners.

FILE # E466295

All Plans and Specifications shall conform to the requirements of the National Electrical Code and all other applicable local codes.

Order Issued By: [Name]
 Date: 1/19

Job # XXXX
 Address: Baltimore, MD



Cima Network, Inc.
 1711 New Britain Blvd.
 Chalfont, PA 18914

office: 267.208.0575
 fax: 267.208.0577
 www.cimainetwork.com

FILE #E455295

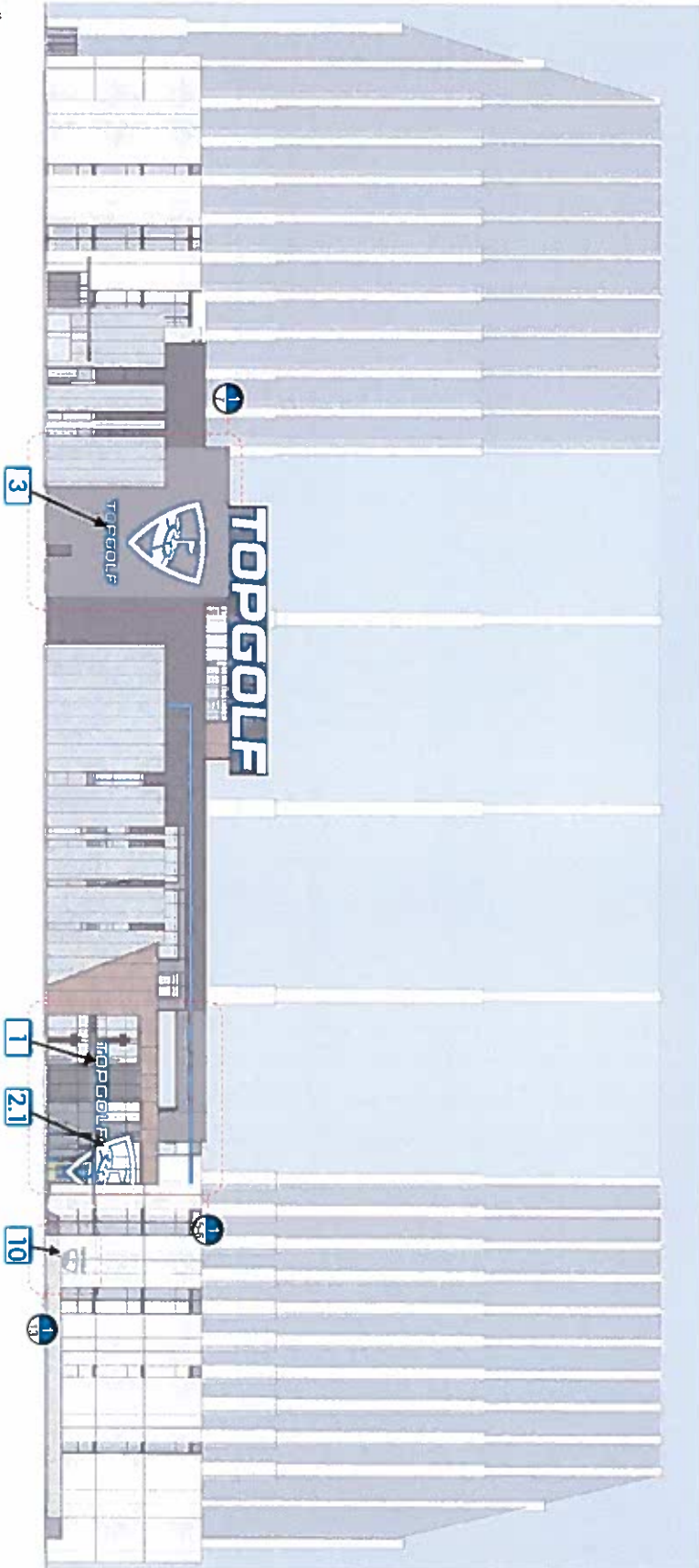
All Rights Reserved. No part of this publication may be reproduced, stored in a retrieval system, or transmitted in any form or by any means, electronic, mechanical, photocopying, recording, or by any information storage and retrieval system, without the prior written permission of the publisher.

Client: Topgolf
 Drawn By: RE
 Date: 1/19

Job # XXXX
 Address:
 Baltimore, MD

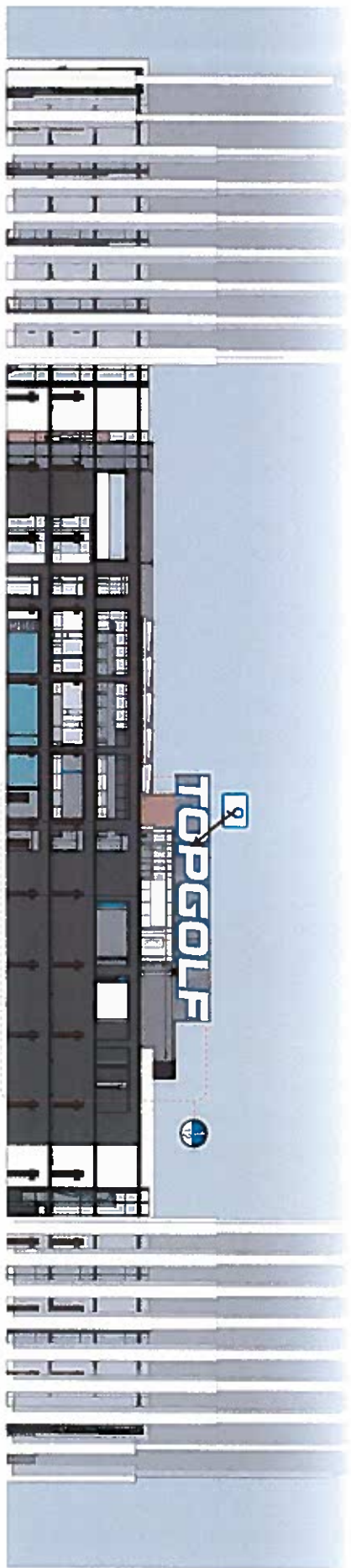
SHT 3

Front Elevation
 Scale: 1/8" = 1'-0"

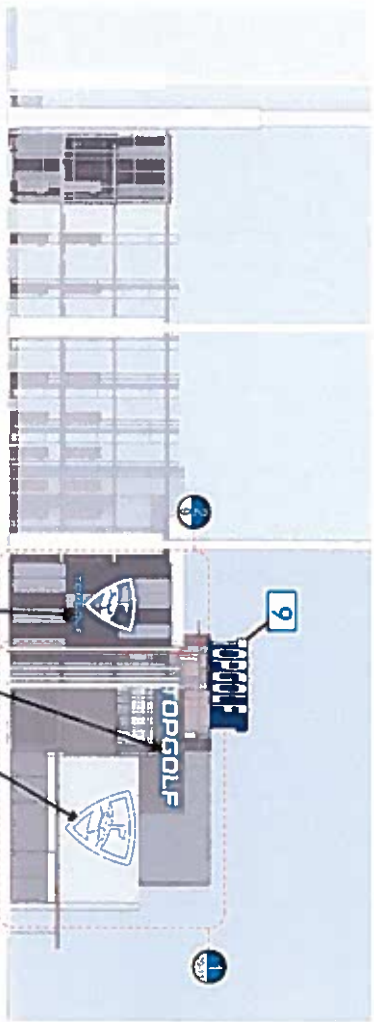


REV 7

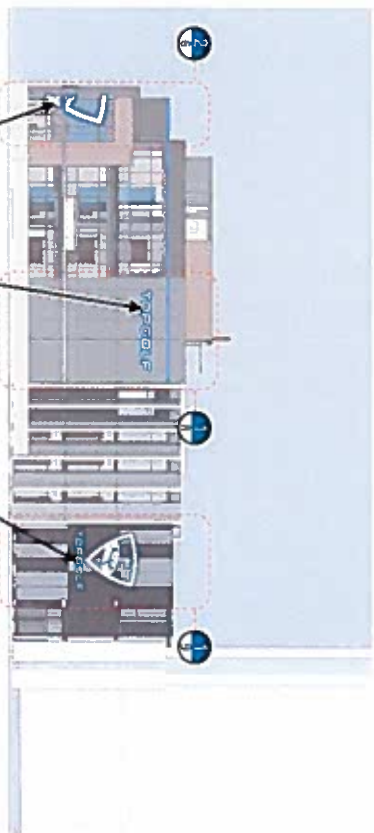
ELEVATIONS



8 Rear Elevation
Scale: 1/32" = 1'-0"



9 Left Side Elevation
Scale: 1/32" = 1'-0"



3 Right Side Elevation
Scale: 1/32" = 1'-0"



Cima Network, Inc.
1711 New Britain Blvd
Chillicothe, PA 16914

office: 767.300.0575
fax: 767.200.0577
www.cimastandard.com

FILE #E-465295

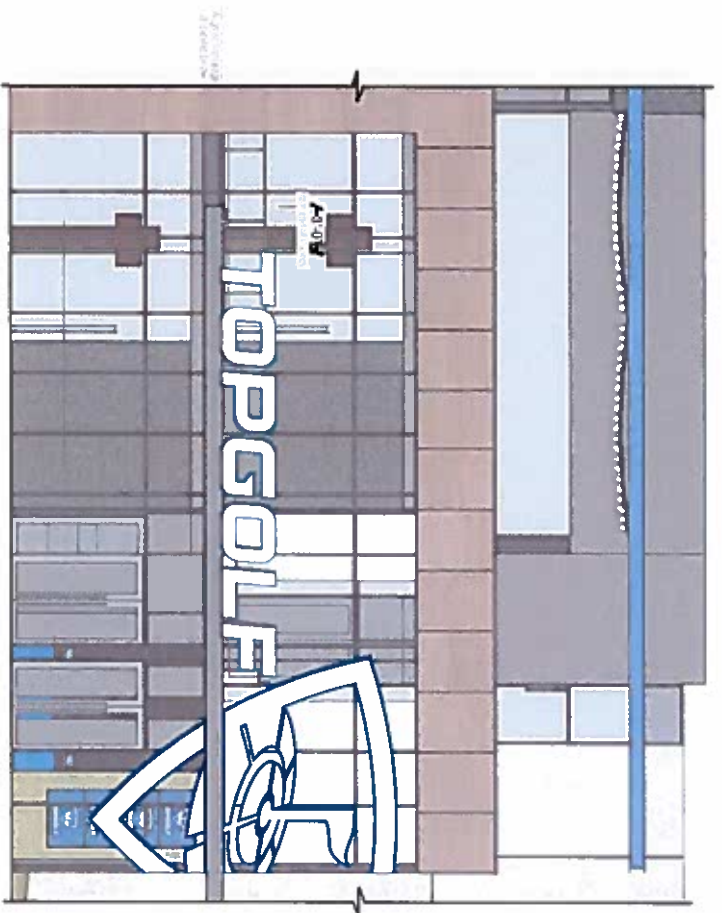
All Rights Reserved. No reproduction or translation without the written permission of the copyright owner. All rights reserved. This document is the property of CIMA Network, Inc. and is not to be distributed, copied, or otherwise used without the written permission of CIMA Network, Inc.

Drawn By: RE
Date: 11/19

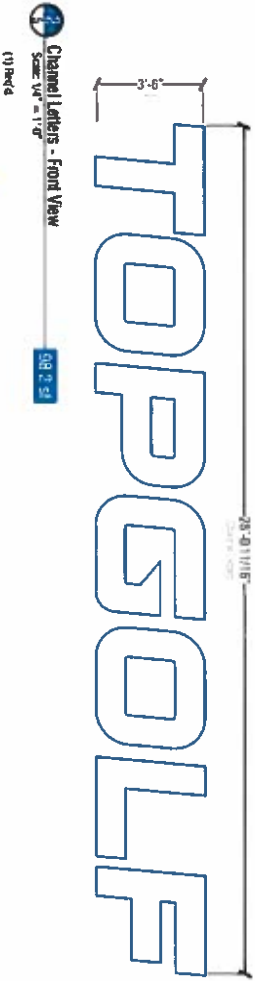
Job # 1001X
Address:
Baltimore MD

SHT 4
REV 7

ELEVATIONS



Front Elevation - Partial @ Entrance
Scale: 1/8" = 1'-0"



Channel Letters - Front View
Scale: 1/8" = 1'-0"



Channel Letters - Side View
Scale: 1/8" = 1'-0"

SIGN #1

42" -TOPGOLF- Channel Letters

- Colors & Finishes
- P1: ■ RAS 7836; w/ star finish
 - P2: ■ Color 100 to match Canopy
 - U1: ■ 1/8" dia. White Anodized Acrylic

Sign Description

1. 1 acq. a channel letter backs & returns finished to match P1 - extruded aluminum w/ (GSMK white (11) finishes & mounted to top of canopy.
2. All faces w/ thin copper finish brushed P1
3. Fabricated aluminum gaskets for back of letters finished to match P2
4. Fabricated gaskets to be mounted to top of standing seam roof & finished to match P2



Cima Network Inc.
1211 New Britain Blvd.
Chesham, PA 18914
office: 267 200 0575
fax: 267 200 0577
www.cimanetwork.com

This is an original, unexpired drawing created by Cima Network, Inc. and is intended for your exclusive use in connection with a project being provided by Cima Network, Inc. Its use for any other project without the prior written consent of Cima Network, Inc. is strictly prohibited.



All Rights Reserved. This is a reproduction of a drawing created by Cima Network, Inc. and is intended for your exclusive use in connection with a project being provided by Cima Network, Inc. Its use for any other project without the prior written consent of Cima Network, Inc. is strictly prohibited.

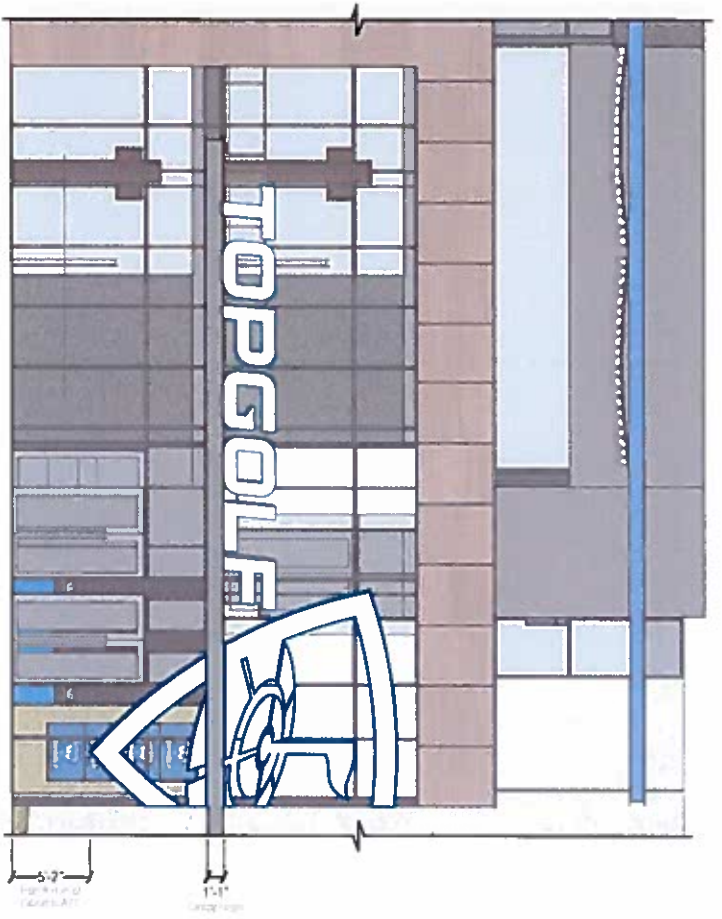
Drawn By: BE
Date: 3/19

Job # XXXX
Address
Gaithers MD

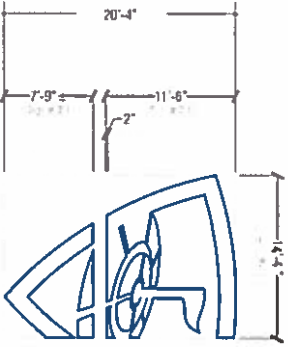
SHT 5 of 5

REV 7

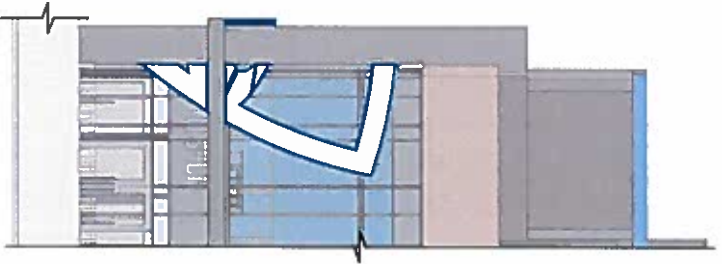
CONCEPTUAL



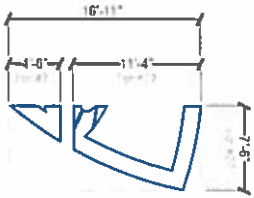
1 Front Elevation - Partial @ Entrance
Scale: 1/8" = 1'-0"



2 Logo Cabinet - Front View (Segment #1)
Scale: 3/8" = 1'-0"
(1) Bed 4



3 Right Side Elevation - Partial @ Entrance
Scale: 1/8" = 1'-0"



4 Logo Cabinet - Front View (Segment #3)
Scale: 3/8" = 1'-0"
(1) Bed 4

SIGN #2

183 5" Topgolf Logo Cabinet

Colors & Finishes
 P1 ■ PMS 288C w/ satin finish
 M1 ■ 3/16" Thk. Silver Anodized Acrylic

Sign Description
 1 ■ Handmade (engraved) silver topgolf.com



Cima Network, Inc.
171 New Britain Blvd
Chalfont, PA 18914

office: 267.200.0575
fax: 267.200.0577
www.cimanetwork.com

This is an original, uneditable drawing created by Cima Network, Inc. It is intended for your exclusive use in connection with the project being provided by Cima Network, Inc. It is not to be used for any other project or purpose without the written consent of Cima Network, Inc. All rights reserved.

FILE # E465295

All Rights Reserved. No part of this drawing may be reproduced or transmitted in any form or by any means, electronic, mechanical, photocopying, recording, or by any information storage and retrieval system, without the prior written permission of Cima Network, Inc.

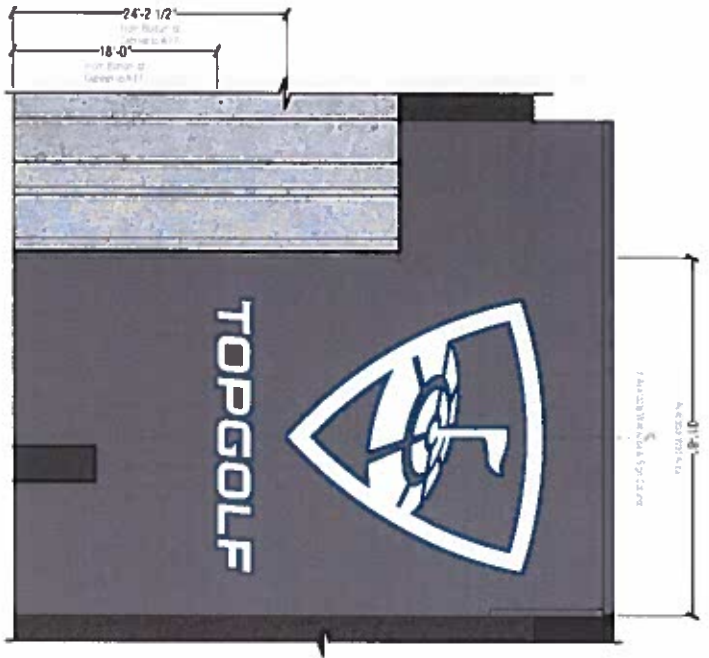
Client: Topgolf
 Drawn By: BE
 Date: 3/19

Job # 100X
 Address: Baltimore, MD

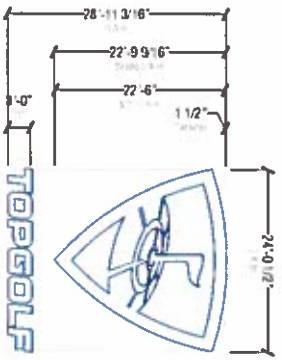
SHT 6 of 6

REV 7

CONCEPTUAL



14 Front Elevation - Partial
Scale: 1/2" = 1'-0"



15 Logo Cabinet - Front View
Scale: 1/8" = 1'-0"
(1) Note



16 Logo Cabinet - Side View
Scale: 1/8" = 1'-0"

SIGN #3

243 5" Topgolf Logo Cabinet

Color & Finish
 P: White 230C w/ silver
 M1: 27/6" Dk. White finished Acrylic
Sign Description
 : Damaged Acrylic sheet replacement.



Cima Network, Inc.
 121 New Britain Blvd.
 Chalfont, PA 18914

Office: 267 308 0575
 Fax: 267 200 0577
 www.cimainetwork.com

File #E466295

All Rights Reserved. All drawings created by Cima Network, Inc. are submitted by you and we reserve all rights in any and all drawings created by Cima Network, Inc. All rights reserved. No part of this drawing may be reproduced without the written permission of Cima Network, Inc.

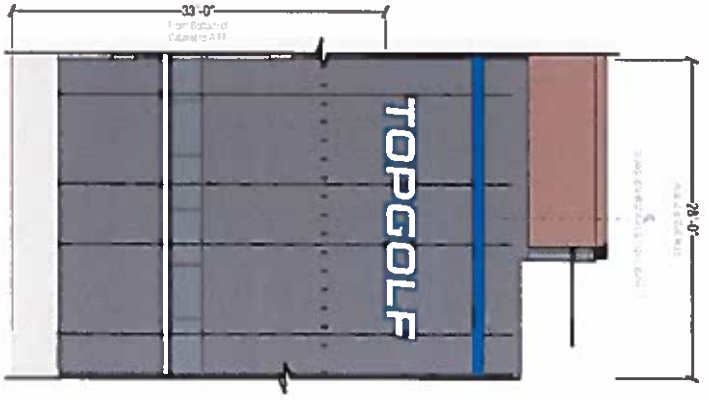
Client: Topgolf
 Drawn By: BE
 Date: 11/19

Job # 100X
 Address: Baltimore, MD

SHT 7

REV 7

CONCEPTUAL



1 Right Side Elevation - Partial
Scale: 3/32" = 1'-0"



2 Channel Letters - Front View
Scale: 1/8" = 1'-0"
(1) Piece



3 Channel Letters - Side View
Scale: 1/8" = 1'-0"

SIGN #4

32" "TOPGOLF" Channel Letters

Colors & Finishes
 P1 ■ 1/16" 28/31 w/ silver finish
 M1 ■ 3/8" 0M, VMW Modified Acrylic

Sign Description
 1. 32" tall channel letter returns finished to match P1, of metal, illuminated w/ 6000K white LED modules & mounted flush to wall
 2. All faces w/ 1/16" cap letters finish (P1)



Cima Network, Inc.
 121 New Britain Blvd
 Chalfont, PA 18914

Office: 267-308-0975
 Fax: 267-200-0377
www.cimainetwork.com

This is an original unmodified drawing created by Cima Network, Inc. It is submitted for your exclusive review and approval. No part of this drawing may be reproduced or transmitted in any form or by any means, electronic or mechanical, including photocopying, recording, or by any information storage and retrieval system, without the prior written permission of Cima Network, Inc.

FILE #E466295

All Rights Reserved. No part of this drawing may be reproduced or transmitted in any form or by any means, electronic or mechanical, including photocopying, recording, or by any information storage and retrieval system, without the prior written permission of Cima Network, Inc.

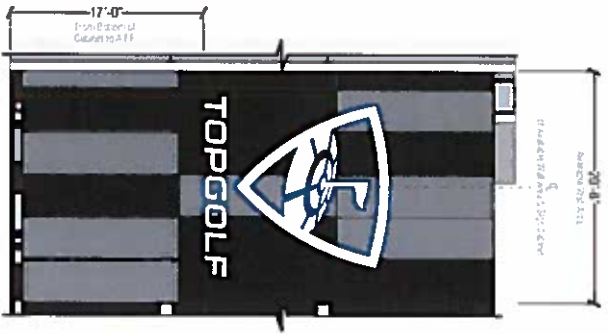
Drawn By: BE
 Date: 4/19

Job #: XXXX
 Address: Baltimore MD

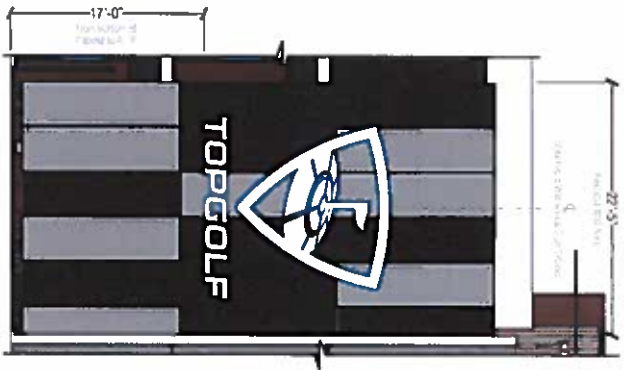
SHT 8

REV 7

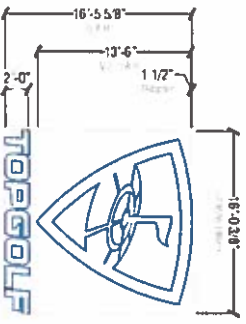
CONCEPTUAL



1 Right Side Elevation - Partial
Scale: 3/32" = 1'-0"



2 Left Side Elevation - Partial
Scale: 3/32" = 1'-0"



3 Logo Cabinet - Front View
Scale: 3/32" = 1'-0"
01 Panel



4 Channel Letters - Side View
Scale: 1/8" = 1'-0"

SIGN #5 & 8

198" Channel Letters w/ Logo Stocked

Colors & Finishes
 P1 ■ PMS 2985 w/ sign finish
 A11 ■ 3 1/8" IPA White Absorbed Acrylic

Sign Description

1. 1 Acrylic channel letter returns finished to match P1.
2. Internally illuminated w/ 6500K white LED modules & textured finish to wall.
3. 2.541" deep w/ 1/8" cap returns finished P1.
4. 3. Illuminated 198" tall small logo cabinet.

Logo Finishes not typical to brand standards



Cima Network, Inc.
 121 New Britain Blvd.
 Chalfont, PA 18914
 office: 767.208.0575
 fax: 767.208.0577
 www.cimainetwork.com

This is an original, unaltered drawing created by Cima Network, Inc. It is submitted for your review and approval. Your approval is required for any reproduction of this drawing. No part of this drawing may be reproduced or transmitted in any form or by any means, electronic, mechanical, photocopying, recording, or by any information storage and retrieval system, without the prior written permission of Cima Network, Inc.

FILE #E466295

All Electric Signs to be made, installed to meet the requirements of UL48 and listed to meet the requirements of Article 601.116 National Electrical Code and all other applicable local codes. Installation to meet all applicable codes.

Drawn By: BE
 Date: 3/19

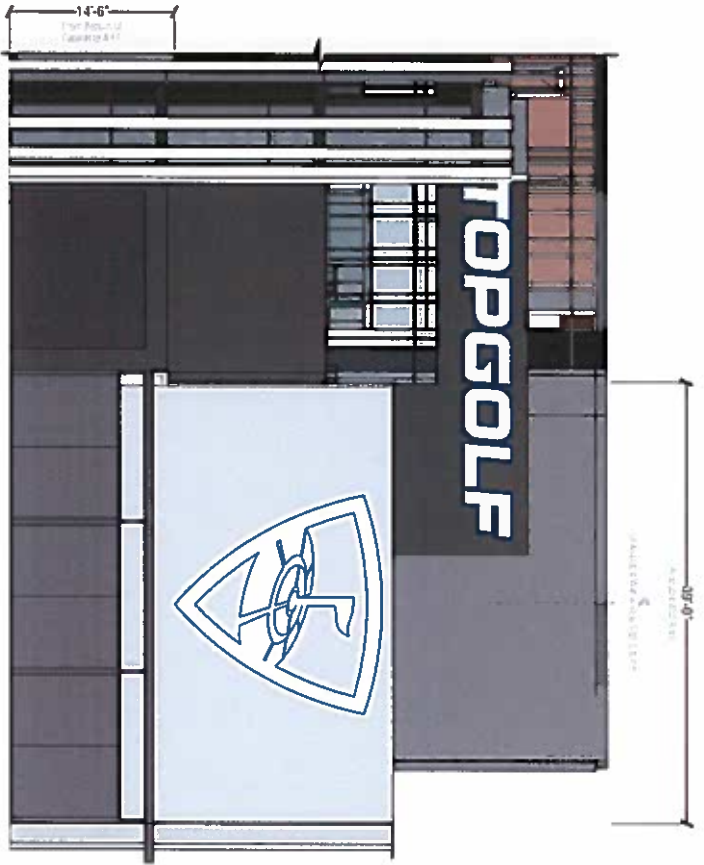
Job # XXXX
 Address
 Baltimore, MD

5HT
 7/13
 9

REV

7

CONCEPTUAL

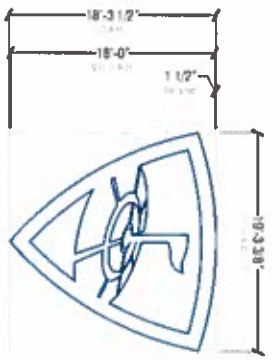


SIGN #6

219.5" Topgolf Logo Cabinet

- Colors & Finishes**
- 1) ■ PMS 2835 w/ clear finish
 - 2) ■ 316 0A. White Maxbond Acrylic
- Sign Description**
- 1) Domed 1/4" x 1/4" steel top cabinet.

14 Front Elevation - Partial
Scale: 3/32" = 1'-0"



15 Logo Cabinet - Front View
Scale: 3/32" = 1'-0"
(1) Rev'd

16 Logo Cabinet - Side View
Scale: 3/32" = 1'-0"



Cima Network, Inc.
121 New Britain Blvd.
Chillicothe, PA 16914

office: 767.200.0575
fax: 767.200.0577
www.cimastore.com

FILE #E466295

All Blue Signs are manufactured by our partners in the United States. All other materials are imported from other countries. All materials are of the highest quality and are made in the USA.

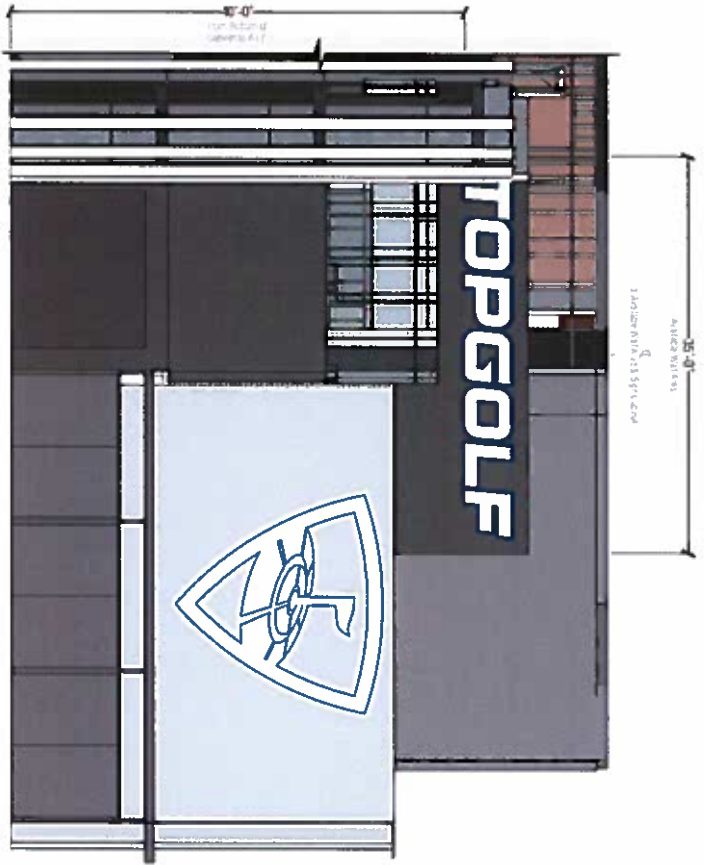
Drawn By: RE
Date: 3/19

Job # XXXX
Address [blacked out]
[blacked out]

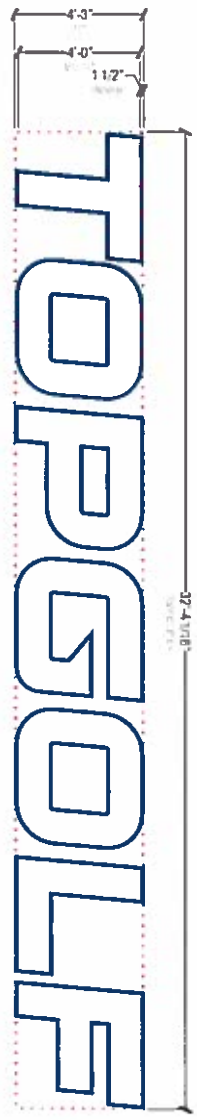
SHT 10 of 1

REV 7

CONCEPTUAL



1 Front Elevation - Partial
Scale: 1/8" = 1'-0"



2 Channel Letters - Front View
Scale: 1/4" = 1'-0"

337 631



Cima Network, Inc.
1211 Hwy Edison Blvd
Cloffort, PA 18914

Office: 267.308.0575
Fax: 267.308.0577
www.cimastore.com

FILE #E465295

All Rights Reserved. Signs to be manufactured to order for new projects only.
This drawing is for informational purposes only. It is not intended to be used for construction.
The manufacturer reserves the right to change the design and details of the sign.

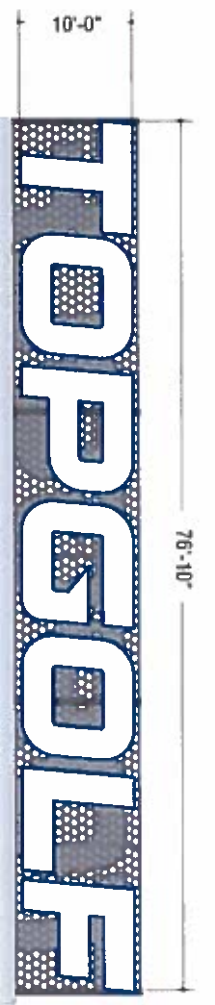
Order Requested By: BE
Date: 12/19

Job # XXXX
Address: Baltimore, MD

SHT 11

SIGN #7

- 48" Topgolf Logo Cobble
- Colors & Finishes:
 - 1. 1/2" x 2 1/2" w. star finish
 - 2. 3/8" Dia. White Washed Acrylic
- Sign Description:
 - 1. 48" H channel letter returns brushed to match 1/1"
 - 2. 1/2" x 2 1/2" w. star finish
 - 3. 3/8" Dia. White Washed Acrylic
 - 4. 2. 1/2" x 2 1/2" w. star finish



Channel Letters - Front View
Scale: 3/8" = 1'-0"
(1) hwd

68.3 SF

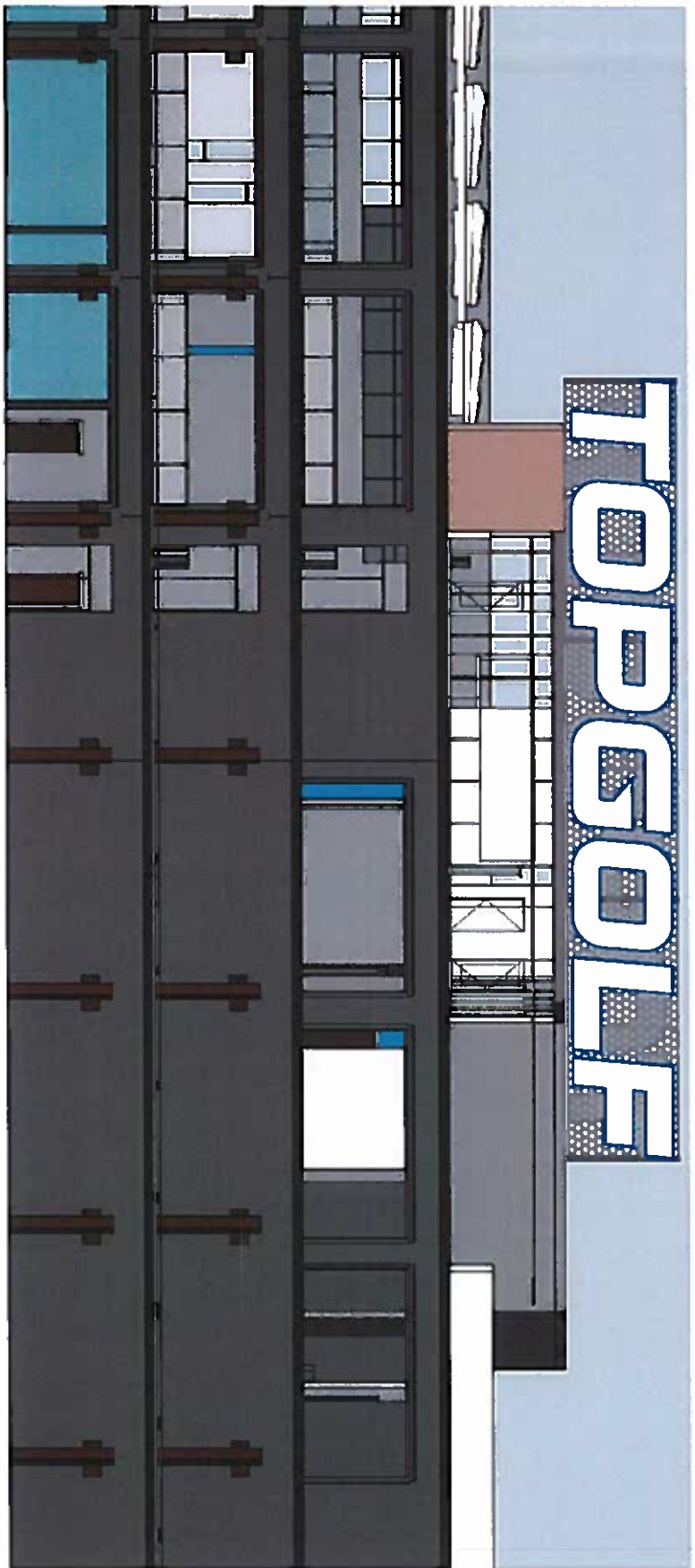


Channel Letters - Side View
Scale: 3/8" = 1'-0"

SIGN #9

"TOPGOLF" Channel Letters

- Color & Finishes**
- 1) **MS 200K** w/ silver finish
 - 2) **MS 200K** w/ black finish
 - 3) **MS 200K** w/ white finish
- Sign Description**
- 1) **Face** - 1/4" aluminum extrusion finished with powder coat paint
 - 2) **Mounting** - 1/2" aluminum extrusion finished with powder coat paint
 - 3) **Support** - 1/2" aluminum extrusion finished with powder coat paint



Rear Elevation - Partial
Scale: 3/8" = 1'-0"



Cima Network, Inc.
121 New Britain Blvd.
Chalfont, PA 18914

office: 267.200.0575
fax: 267.200.0577
www.cimastore.com

FILE #E465295

All files & signs to be submitted to the relevant authority for review and approval. All signs to be submitted to the relevant authority for review and approval. All signs to be submitted to the relevant authority for review and approval.

Drawn By: BE
Date: 3/19

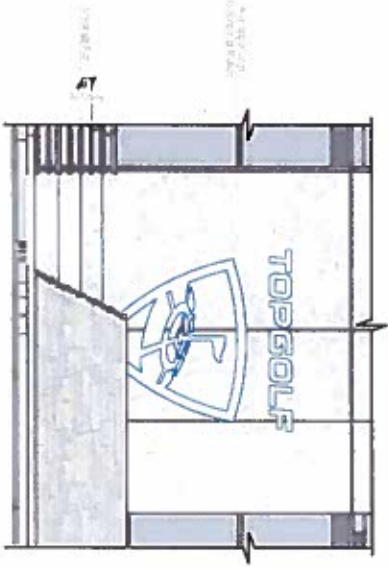
Job # 2008
Address: [blacked out]

SIGN #10

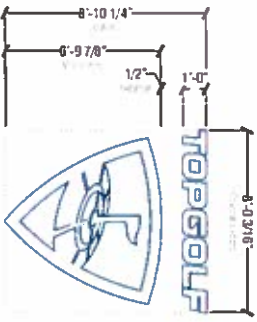
130" * TOPGOLF * w/ Logo Social Media

Colors & Finishes
 P1 194S 293C w/ sign finish
 M1 3116 DM White Modified Acrylic

Sign Description
 1. Diamond Logo/IT Shield Logo/Club
 2. Face & diamond letter returns finished in multi-p
 3. internally illuminated w/ 6500K white LED modules &
 mounted back to wall



11 Front Elevation - Partial
 Scale: 3/16" = 1'-0"



12 Channel Letters - Front View
 Scale: 3/16" = 1'-0"
 (1) Panel

70 9 SF

13 Channel Letters - Side View
 Scale: 3/16" = 1'-0"



Cima Network, Inc.
 121 New Britain Blvd
 Chalfont, PA 18914
 office: 267.308.0575
 fax: 267.308.0577
 www.cimainetwork.com

This is an original, unaltered drawing, created by Cima Network, Inc. and is identified by
 your address as well as our address with a graphic being provided by Cima Network, Inc. It is
 not to be reproduced or transmitted in any form or by any means, electronic, mechanical,
 or other information storage and retrieval systems, without prior written permission of Cima Network, Inc.

FILE # E465295

All Drawings to be manufactured in accordance with the requirements of
 the International Building Code and the International Electrical Code. The
 International Building Code and International Electrical Code are the governing
 codes for the construction of this sign.

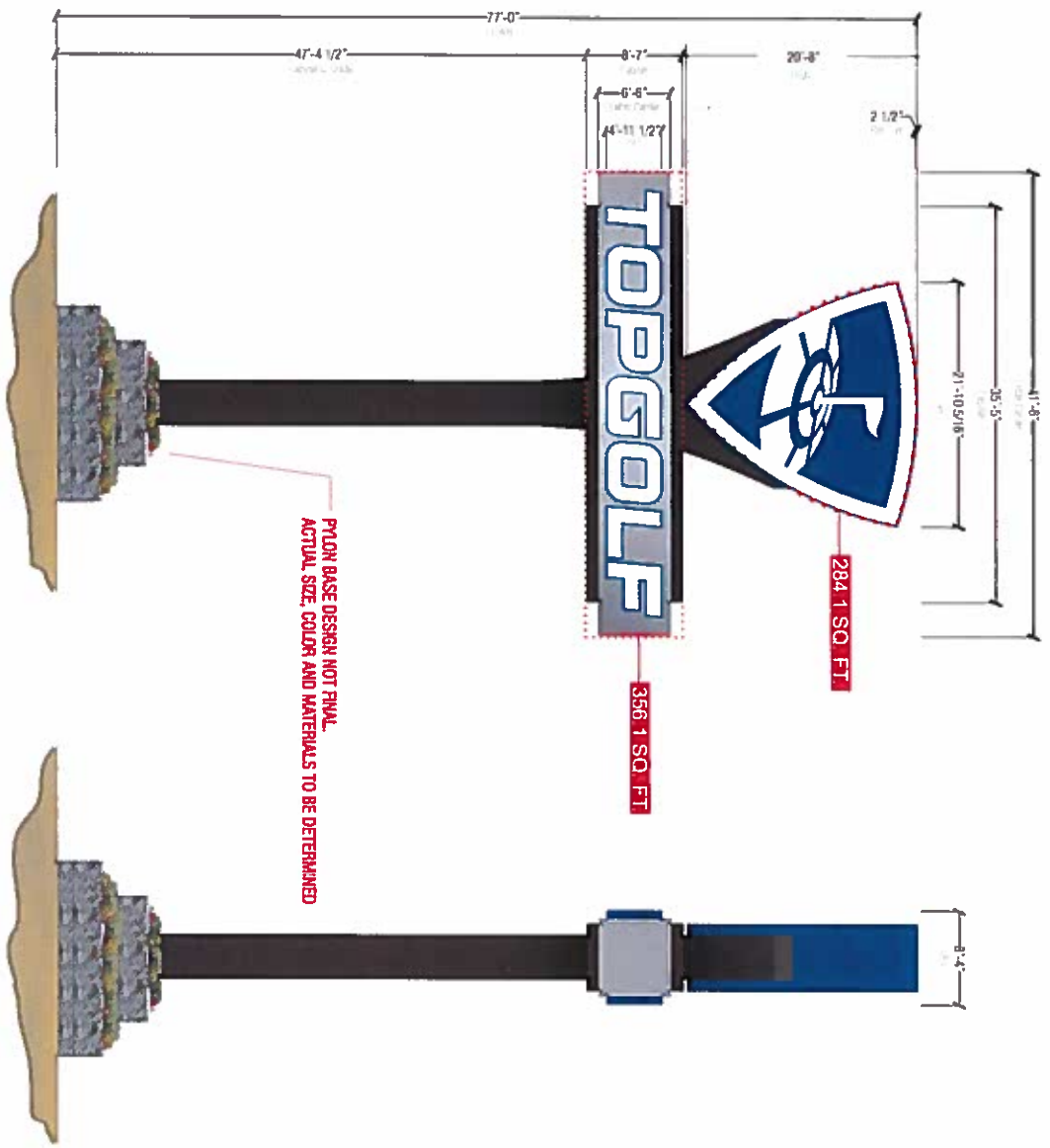
Drawn By: BE
 Date: 3/19

Job # 2003
 Address: Baltimore, MD

SHT 13 of 14

REV 7

CONCEPTUAL



Plan - Front View
Scale: 1/4" = 1'-0"
(1) sheet

6-10 2 TOTAL SQ. FT.

284 1 SQ. FT.

356 1 SQ. FT.

POOL BASE DESIGN NOT FINAL.
ACTUAL SIZE, COLOR AND MATERIALS TO BE DETERMINED



SIGN #11

77'-0" Plan

- Colors & Finishes**
- P1 ■ 1165 2B3C w/ satin brush
 - P2 ■ 1167 41342 brushed aluminum w/ satin brush
 - P3 ■ 1165 1846 w/ satin brush
 - 211 ■ 3/16" dk. White finished Acrylic
 - V1 ■ Adren 2200 211 4 (blue vinyl)

Sign Fabrication

1. Fabric center cabinet finished to match P2
2. Support cabinet finished to match P3
3. Fabric a channel sign "TOPGOLF" & logo letters finished to match P1; internally illuminated w/ 6400K white LED modules
4. 141 faces w/ flat surface; 1/4" round corners finished P1
5. Support detail finished to match P3.



Cima Network, Inc.
1721 Kiewit Business Blvd
Chillicothe, IA 18914

Office: 267.208.0575
Fax: 767.208.0577
www.cimainetwork.com

File #E465295

Not a contract. Unusable and drawings created by Cima Network, Inc. is intended for your use only. We are not responsible for any errors or omissions in this drawing. All dimensions are in feet and inches unless otherwise noted. All dimensions are approximate and subject to change without notice. All dimensions are in feet and inches unless otherwise noted.

Drawn By: BE
Date: 11/19

Job # XXXX
Address
Palmer, MD

SHT 14