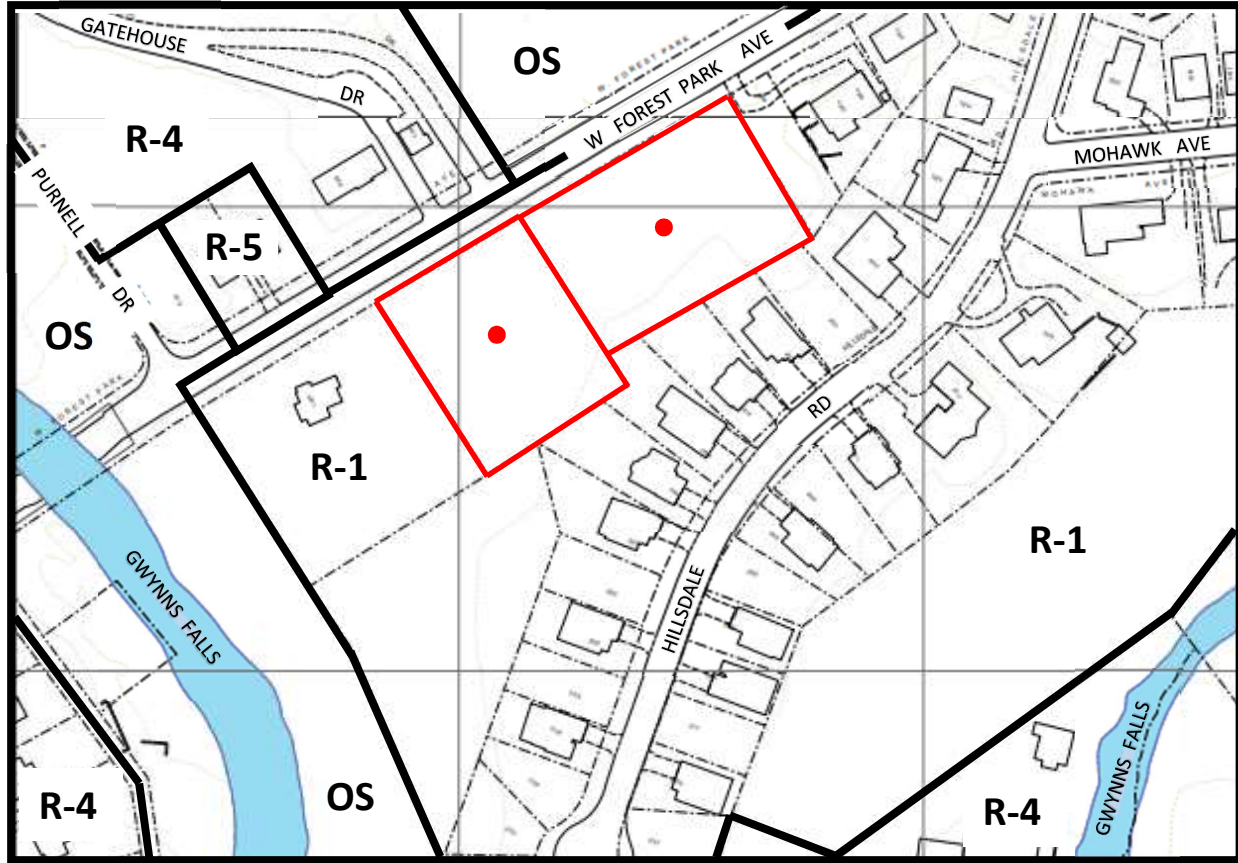


**SHEET NO. 31 OF THE ZONING MAP OF
THE ZONING CODE OF BALTIMORE CITY**



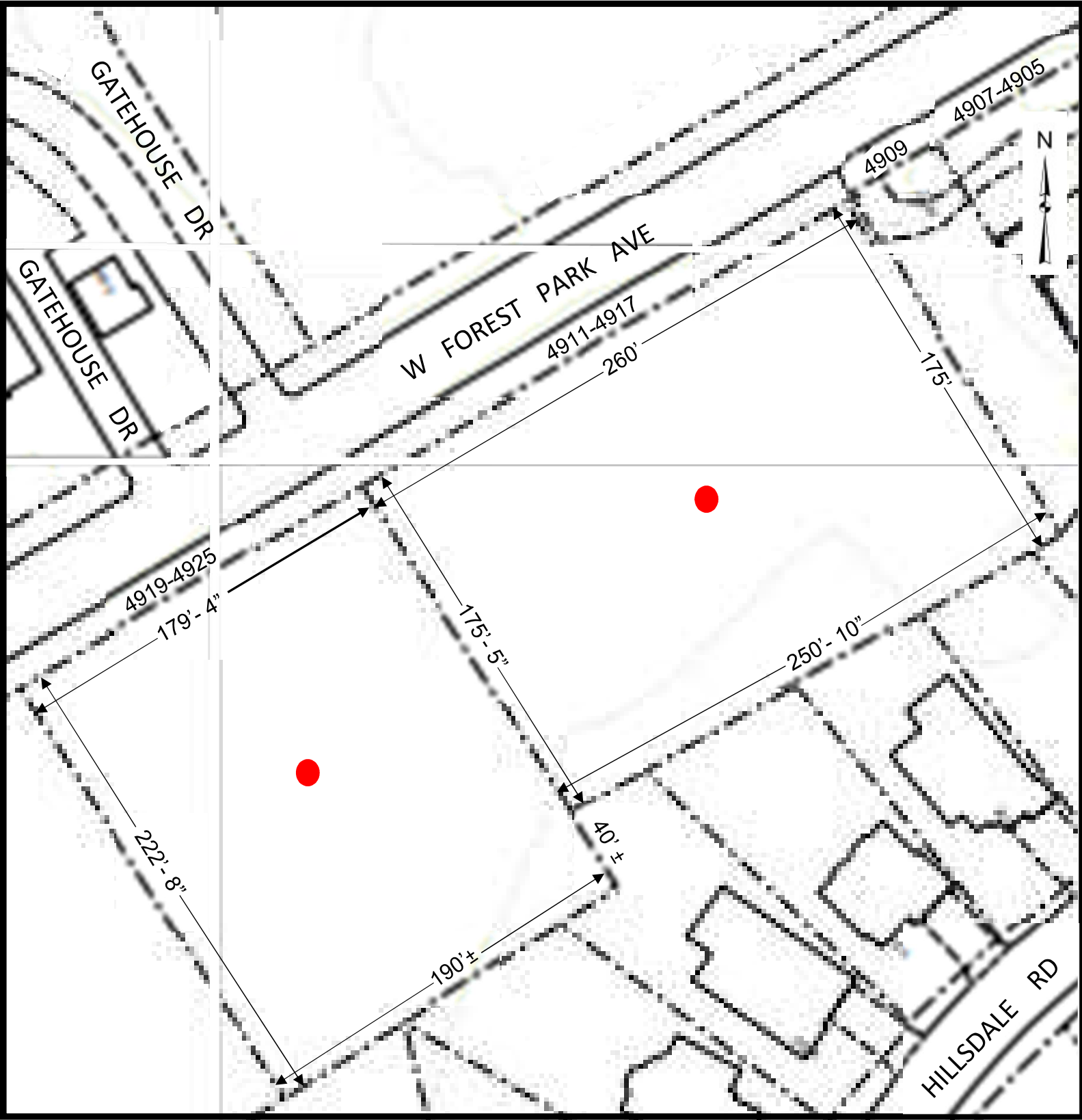
Scale: 1" = 200'

In Connection With The Properties Known As Nos.
4911-4917 WEST FOREST PARK AVENUE And
4919-4925 WEST FOREST PARK AVENUE. The
Applicant Wishes To Request The Rezoning Of The
Aforementioned Properties From R-1 Zoning District to
OS Zoning District, As Outlined In Red Above.

WARD 28 SECTION 4
BLOCK 8393G LOTS 2F & 3

MAYOR

PRESIDENT CITY COUNCIL



Scale: 1" = 60'

4911 - 4917 WEST FOREST PARK AVENUE

4919 - 4925 WEST FOREST PARK AVENUE

Sheet #2