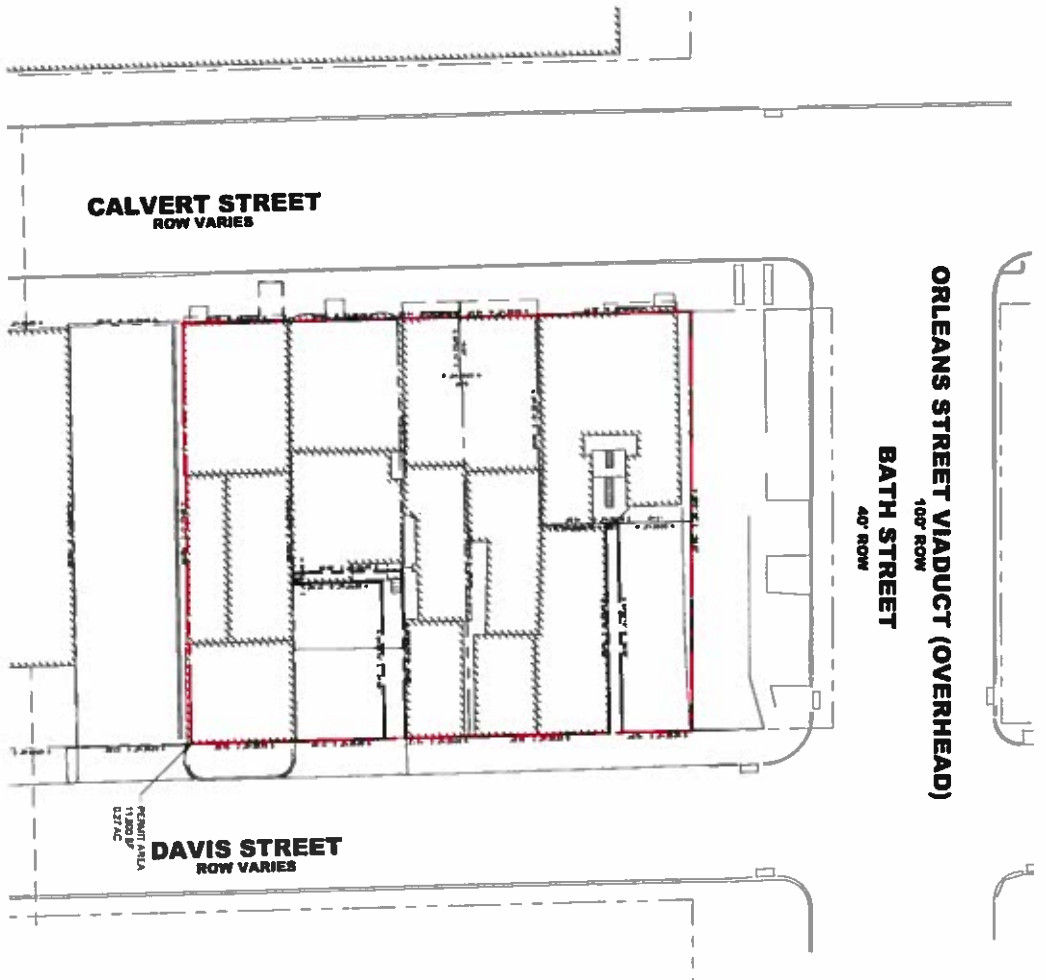


# TEMPORARY PARKING LOT

## 347-357 N CALVERT ST & 352 & 360 DAVIS ST BALTIMORE, MD 21202



**Sheet List Table**

Sheet Number	Sheet Title
C0.00	COVER SHEET
C1.00	EXISTING CONDITIONS
C2.00	SITE PLAN
C3.10	DETAILS
L1.00	LANDSCAPE PLAN

**SURVEY INFORMATION**

SITE TOPOGRAPHY AND EXISTING CONDITIONS ARE BASED ON SURVEY FROM CHESAPEAKE ENVIRONMENTAL MANAGEMENT, INC., DATED OCTOBER 2017.

2 SUPPLEMENTAL UTILITY INFORMATION SHOWN IS FROM AVAILABLE PUBLIC DRAWINGS AND GIS INFORMATION FROM THE BALTIMORE CITY DEPARTMENT OF PUBLIC WORKS.

**PROPERTY DEVELOPER/OWNER**  
 MERCY HEALTH SERVICES  
 ATTN: JUDITH WELAND  
 345 ST PAUL PLACE  
 BALTIMORE, MD 21202  
 TEL: (410) 328-2297  
 EMAIL: JWELAND@MERCY.COM

**LANDSCAPE ARCHITECT/CIVIL ENGINEER**  
 KIMLEY-HORN  
 ATTN: MELANIE DEFAZO, PE  
 1718 EAST FORT AVENUE  
 SUITE 304  
 BALTIMORE, MD 21202  
 TEL: (443) 743-3470  
 EMAIL: MELANIE.DEFAZO@KIMLEY-HORN.COM

**SITE INFORMATION**

ADDRESS	WARD	SECTION	BLOCK	LOT	AREA (SF)	AREA (AC)
347-357 N CALVERT ST AND 352 & 360 DAVIS STREET	04	012	0984	004 005 007 008 009 011 016	11,608	0.27

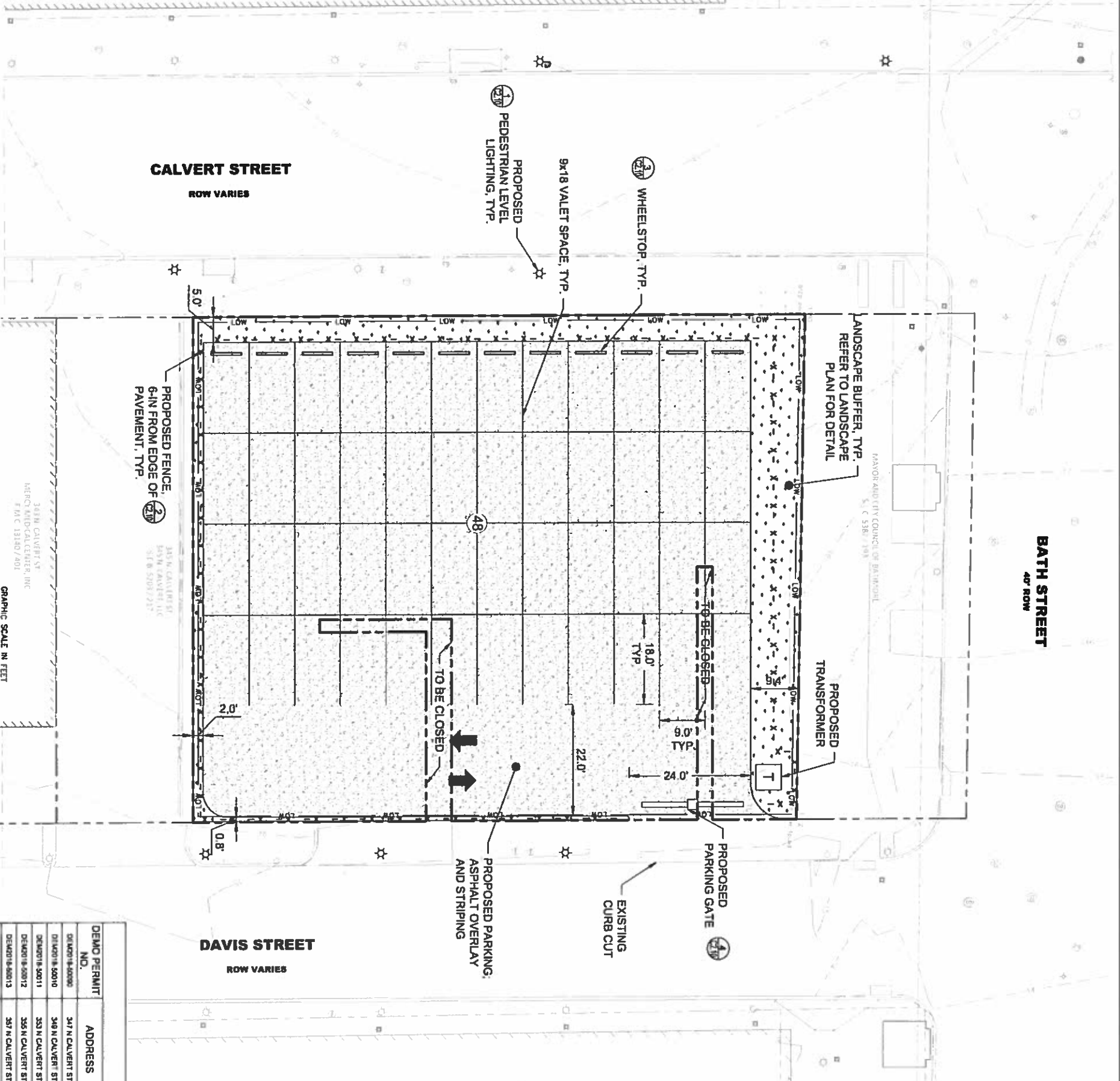


<b>MERCY MEDICAL - CALVERT</b> PREPARED FOR <b>MERCY HEALTH SERVICES</b> BALTIMORE, MD	<b>COVER SHEET</b>	KHA PROJECT 114025000 DATE 02/16/2018 SCALE AS SHOWN DESIGNED BY MID DRAWN BY STM CHECKED BY MLD	<b>Kimley»Horn</b> © 2018 KIMLEY-HORN AND ASSOCIATES, INC. 1715 E FORT AVE, SUITE 304, BALTIMORE, MD 21202 PHONE 443-743-3470 WWW.KIMLEY-HORN.COM © 2017 KIMLEY-HORN AND ASSOCIATES, INC.	SHEET NUMBER <b>C0.00</b>	REVISIONS DATE BY
---	--------------------	---	--	------------------------------	-------------------------

194



CALL 48 HOURS BEFORE YOU DIG  
 ITS THE LAW!  
 DIAL 811  
  
 Know what's below you dig



BATH STREET  
 40' ROW

DAVIS STREET  
 ROW VARIES

CALVERT STREET  
 ROW VARIES



VICINITY MAP  
 SCALE: 1" = 100'

**SITE LEGEND**

- PROPERTY LINE
- LIMIT OF WORK (SHOWN AS 1' OFFSET FROM PROPERTY LINE FOR CLARITY)
- PROPOSED FENCE
- PROPOSED ASPHALT PAVEMENT
- PROPOSED LANDSCAPING
- TRANSFORMER
- DETAIL CALLOUT

**LIMIT OF WORK = 11,608 SF (0.27 AC)**  
**LIMIT OF DISTURBANCE = 0 SF EARTHWORK = 0 CY**

**GENERAL NOTES**

1. ALL WORK TO BE DONE ON PRIVATE PROPERTY
2. PARKING IS TEMPORARY
3. PROPOSED WORK INCLUDES ASPHALT OVERLAY OF EXISTING IMPERVIOUS AND STRIPING
4. LIMIT OF WORK SHOWN 1' OFF PROPERTY LINE FOR CLARITY

**PARKING TABULATION**

PROPOSED PARKING, 48 VALET PARKING SPACES

**SURVEY INFORMATION**

1. SITE TOPOGRAPHY AND EXISTING CONDITIONS ARE BASED ON SURVEY FROM CHESTER/PAUL ENVIRONMENTAL MANAGEMENT INC., DATED OCTOBER 2017.
2. SUPPLEMENTAL UTILITY INFORMATION SHOWN IS FROM AVAILABLE PUBLIC DRAWINGS AND GIS INFORMATION FROM THE BALTIMORE CITY DEPARTMENT OF PUBLIC WORKS.

**PAVEMENT SECTIONS**


1. OVER EXISTING IMPERVIOUS SURFACES
- 1.1. ASPHALT
- 1.2. ASPHALT

**SITE INFORMATION**

DEMO PERMIT NO.	ADDRESS	BLOCK	LOT	LOW (SF)	LOW (AC)	DESCRIPTION
DEM0018-80008	347 N CALVERT ST	0504	004	2,500	0.08	ASPHALT OVERLAY AND STRIPING
DEM0018-80010	349 N CALVERT ST	0504	005	1,500	0.04	ASPHALT OVERLAY AND STRIPING
DEM0018-80011	353 N CALVERT ST	0504	007	1,506	0.03	ASPHALT OVERLAY AND STRIPING
DEM0018-80012	355 N CALVERT ST	0504	008	2,587	0.08	ASPHALT OVERLAY AND STRIPING
DEM0018-80013	357 N CALVERT ST	0504	009	1,817	0.04	ASPHALT OVERLAY AND STRIPING
N/A EXISTING SURFACE LOT	352 DAVIS ST	0004	016	780	0.02	ASPHALT OVERLAY AND STRIPING
N/A EXISTING SURFACE LOT	360 DAVIS ST	0004	011	800	0.02	ASPHALT OVERLAY AND STRIPING

349N CALVERT ST  
 MERCY MEDICAL CENTER, INC.  
 F.M.C. 13180/401  
**SITE PLAN**  
 SCALE: 1" = 10'



<b>MERCY MEDICAL - CALVERT</b> PREPARED FOR <b>MERCY HEALTH SERVICES</b> BALTIMORE, MD	<b>SITE PLAN</b>	KHA PROJECT 114025000 DATE 02/16/2018 SCALE AS SHOWN DESIGNED BY MLD DRAWN BY STM CHECKED BY MLD	 © 2018 KIMLEY-HORN AND ASSOCIATES, INC. 1215 E FORT AVE, SUITE 304, BALTIMORE, MD 21250 PH: 410-443-7433-3470 WWW.KIMLEY-HORN.COM
SHEET NUMBER <b>C2.00</b>		No. REVISIONS DATE BY	

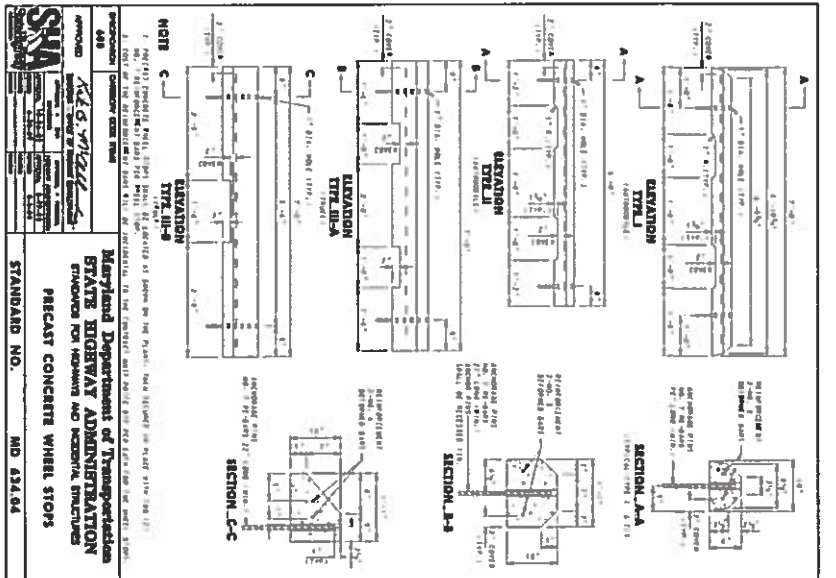




1 PEDESTRIAN ACORN LIGHTS  
N.T.S.



2 ABERDEEN FENCE  
N.T.S.



3 PRECAST CONCRETE WHEEL STOPS  
N.T.S.



- Designed for single lane (1 lane) applications
- Electric line actuator
- Operation can be set to either the left or right hand side of the roadway
- Available with 1/4" steel structure or standard galv. or 1/2" steel structure. A mounting arm 10' long for standard or heavy duty models available.
- 3-year limited warranty



CLASS OF OPERATION	TRAFFIC LANE WIDTH	TYPE	SECTION	WEIGHT	OPTIONS
(B01)	12 ft (3.7 m)	Standard	Standard	118 lbs (53.5 kg)	Standard
	14 ft (4.3 m)	Standard	Standard	148 lbs (67.1 kg)	Standard
	16 ft (4.9 m)	Standard	Standard	178 lbs (80.7 kg)	Standard
	18 ft (5.5 m)	Standard	Standard	208 lbs (94.3 kg)	Standard
	20 ft (6.1 m)	Standard	Standard	238 lbs (108.0 kg)	Standard
	22 ft (6.7 m)	Standard	Standard	268 lbs (121.6 kg)	Standard
	24 ft (7.3 m)	Standard	Standard	298 lbs (135.2 kg)	Standard
	26 ft (7.9 m)	Standard	Standard	328 lbs (148.8 kg)	Standard
	28 ft (8.5 m)	Standard	Standard	358 lbs (162.4 kg)	Standard
	30 ft (9.1 m)	Standard	Standard	388 lbs (176.0 kg)	Standard
	32 ft (9.7 m)	Standard	Standard	418 lbs (189.6 kg)	Standard
	34 ft (10.3 m)	Standard	Standard	448 lbs (203.2 kg)	Standard
	36 ft (10.9 m)	Standard	Standard	478 lbs (216.8 kg)	Standard
	38 ft (11.5 m)	Standard	Standard	508 lbs (230.4 kg)	Standard
	40 ft (12.1 m)	Standard	Standard	538 lbs (244.0 kg)	Standard
	42 ft (12.7 m)	Standard	Standard	568 lbs (257.6 kg)	Standard
	44 ft (13.3 m)	Standard	Standard	598 lbs (271.2 kg)	Standard
	46 ft (13.9 m)	Standard	Standard	628 lbs (284.8 kg)	Standard
	48 ft (14.5 m)	Standard	Standard	658 lbs (298.4 kg)	Standard
	50 ft (15.1 m)	Standard	Standard	688 lbs (312.0 kg)	Standard
	52 ft (15.7 m)	Standard	Standard	718 lbs (325.6 kg)	Standard
	54 ft (16.3 m)	Standard	Standard	748 lbs (339.2 kg)	Standard
	56 ft (16.9 m)	Standard	Standard	778 lbs (352.8 kg)	Standard
	58 ft (17.5 m)	Standard	Standard	808 lbs (366.4 kg)	Standard
	60 ft (18.1 m)	Standard	Standard	838 lbs (380.0 kg)	Standard

**Technical Features**

**Mechanical**

• Electric line actuator

• Operation can be set to either the left or right hand side of the roadway

• Available with 1/4" steel structure or standard galv. or 1/2" steel structure. A mounting arm 10' long for standard or heavy duty models available.

• 3-year limited warranty

**Electrical**

• 120V AC, 60 Hz, 15A

• 240V AC, 60 Hz, 15A

• 240V AC, 60 Hz, 30A

• 240V AC, 60 Hz, 40A

• 240V AC, 60 Hz, 50A

• 240V AC, 60 Hz, 60A

• 240V AC, 60 Hz, 70A

• 240V AC, 60 Hz, 80A

• 240V AC, 60 Hz, 90A

• 240V AC, 60 Hz, 100A

• 240V AC, 60 Hz, 110A

• 240V AC, 60 Hz, 120A

• 240V AC, 60 Hz, 130A

• 240V AC, 60 Hz, 140A

• 240V AC, 60 Hz, 150A

• 240V AC, 60 Hz, 160A

• 240V AC, 60 Hz, 170A

• 240V AC, 60 Hz, 180A

• 240V AC, 60 Hz, 190A

• 240V AC, 60 Hz, 200A

• 240V AC, 60 Hz, 210A

• 240V AC, 60 Hz, 220A

• 240V AC, 60 Hz, 230A

• 240V AC, 60 Hz, 240A

• 240V AC, 60 Hz, 250A

• 240V AC, 60 Hz, 260A

• 240V AC, 60 Hz, 270A

• 240V AC, 60 Hz, 280A

• 240V AC, 60 Hz, 290A

• 240V AC, 60 Hz, 300A

• 240V AC, 60 Hz, 310A

• 240V AC, 60 Hz, 320A

• 240V AC, 60 Hz, 330A

• 240V AC, 60 Hz, 340A

• 240V AC, 60 Hz, 350A

• 240V AC, 60 Hz, 360A

• 240V AC, 60 Hz, 370A

• 240V AC, 60 Hz, 380A

• 240V AC, 60 Hz, 390A

• 240V AC, 60 Hz, 400A

• 240V AC, 60 Hz, 410A

• 240V AC, 60 Hz, 420A

• 240V AC, 60 Hz, 430A

• 240V AC, 60 Hz, 440A

• 240V AC, 60 Hz, 450A

• 240V AC, 60 Hz, 460A

• 240V AC, 60 Hz, 470A

• 240V AC, 60 Hz, 480A

• 240V AC, 60 Hz, 490A

• 240V AC, 60 Hz, 500A

• 240V AC, 60 Hz, 510A

• 240V AC, 60 Hz, 520A

• 240V AC, 60 Hz, 530A

• 240V AC, 60 Hz, 540A

• 240V AC, 60 Hz, 550A

• 240V AC, 60 Hz, 560A

• 240V AC, 60 Hz, 570A

• 240V AC, 60 Hz, 580A

• 240V AC, 60 Hz, 590A

• 240V AC, 60 Hz, 600A

• 240V AC, 60 Hz, 610A

• 240V AC, 60 Hz, 620A

• 240V AC, 60 Hz, 630A

• 240V AC, 60 Hz, 640A

• 240V AC, 60 Hz, 650A

• 240V AC, 60 Hz, 660A

• 240V AC, 60 Hz, 670A

• 240V AC, 60 Hz, 680A

• 240V AC, 60 Hz, 690A

• 240V AC, 60 Hz, 700A

• 240V AC, 60 Hz, 710A

• 240V AC, 60 Hz, 720A

• 240V AC, 60 Hz, 730A

• 240V AC, 60 Hz, 740A

• 240V AC, 60 Hz, 750A

• 240V AC, 60 Hz, 760A

• 240V AC, 60 Hz, 770A

• 240V AC, 60 Hz, 780A

• 240V AC, 60 Hz, 790A

• 240V AC, 60 Hz, 800A

• 240V AC, 60 Hz, 810A

• 240V AC, 60 Hz, 820A

• 240V AC, 60 Hz, 830A

• 240V AC, 60 Hz, 840A

• 240V AC, 60 Hz, 850A

• 240V AC, 60 Hz, 860A

• 240V AC, 60 Hz, 870A

• 240V AC, 60 Hz, 880A

• 240V AC, 60 Hz, 890A

• 240V AC, 60 Hz, 900A

• 240V AC, 60 Hz, 910A

• 240V AC, 60 Hz, 920A

• 240V AC, 60 Hz, 930A

• 240V AC, 60 Hz, 940A

• 240V AC, 60 Hz, 950A

• 240V AC, 60 Hz, 960A

• 240V AC, 60 Hz, 970A

• 240V AC, 60 Hz, 980A

• 240V AC, 60 Hz, 990A

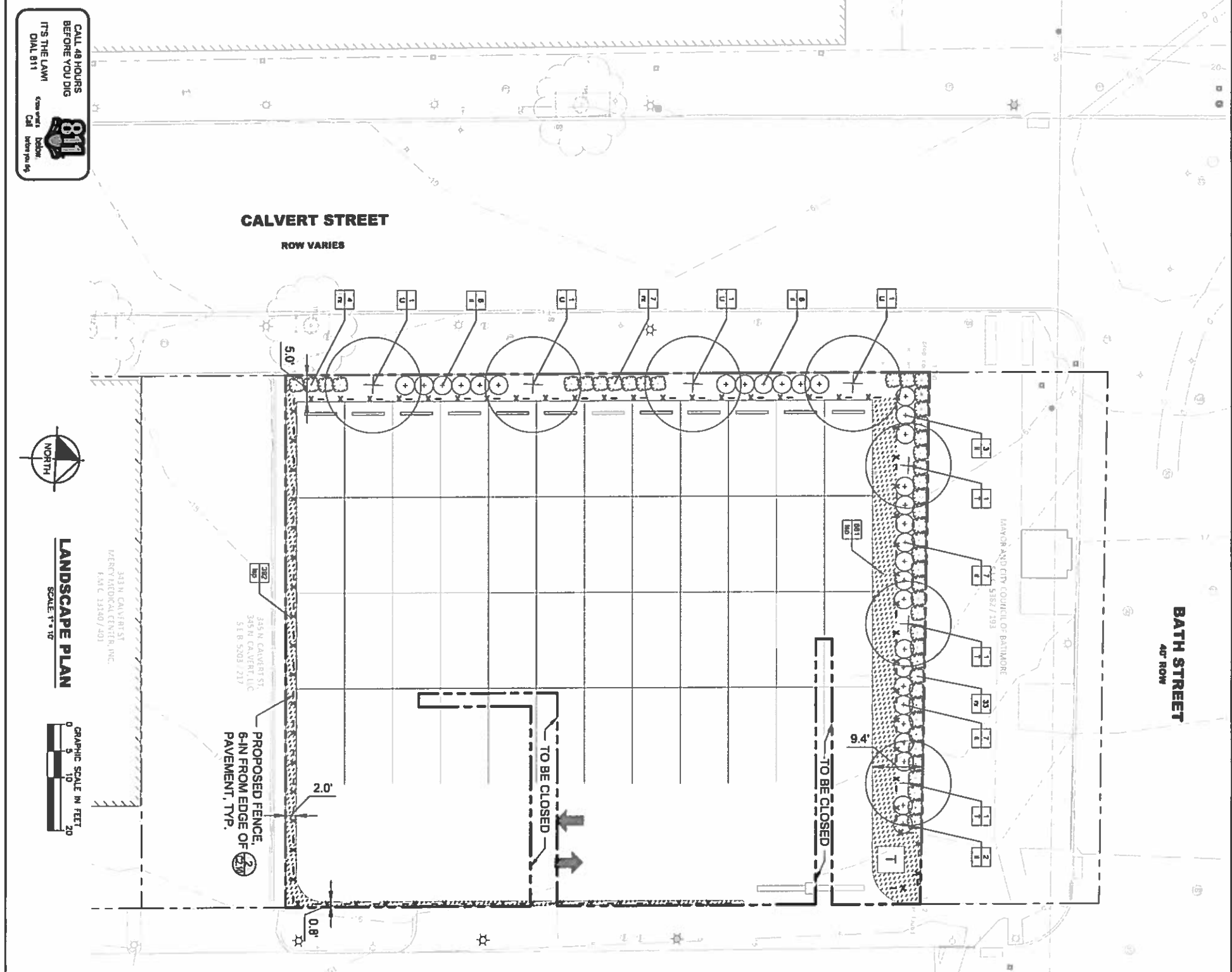
• 240V AC, 60 Hz, 1000A



**ACCESS CONTROL SOLUTIONS**

4 PARKING GATE AND ARM  
N.T.S.

This document, together with the concepts and designs presented herein, is an instrument of service, is intended only for the specific purpose and client for which it was prepared. Abuse of and improper reliance on this document without written authorization and adoption by Kimley-Horn and Associates, Inc. shall be without liability to Kimley-Horn and Associates, Inc.



### PROJECT SITE CONDITIONS

- CONDITION: 0 (PARKING LOT)
- STREET TREES: 1 PLANTING UNITS LF OF FRONTAGE
- TOTAL TREE PLANTING UNITS REQUIRED: 6/2 PLANTING UNITS
- TOTAL TREES PROVIDED: 7 TREES @ 11
- TOTAL PLANTING UNITS: 7 PLANTING UNITS

PROPOSED PLANTINGS EXCEED REQUIREMENTS

- SHRUB PLANTING: 1 PLANTING UNITS LF OF FRONTAGE
- TOTAL SHRUB PLANTING UNITS REQUIRED: 11 PLANTING UNITS
- TOTAL SHRUBS PROVIDED: 75 SHRUBS @ 18
- TOTAL PLANTING UNITS: 125 PLANTING UNITS

PROPOSED PLANTINGS EXCEED REQUIREMENTS

NOTE ABOVE CALCULATIONS ARE SOURCED FROM BALTIMORE CITY LANDSCAPE MANUAL, MAY 2017.

### LANDSCAPE CALCULATIONS:

RESTORATION REQUIREMENTS  
 AREA IN ACRES: X 0.15 = REQUIRE FOREST COVER (ACRES)  
 0.28

TOTAL REQUIRED LAND AC. X 110 = 42 TREES = 9 FOREST COVER TREES  
 (25" CAL.) OR 125 PLANTING UNITS

PROPOSED PLANTINGS:  
 75 MAJOR DECIDUOUS TREES @ 11 = 7 TREES  
 TOTAL: 75 SHRUBS

PROPOSED PLANTINGS EXCEED REQUIREMENTS

### PLANT SCHEDULE

TREES	CODE	QTY	BOTANICAL NAME	COMMON NAME	COAR.
+	T	3	Thuja occidentalis	Overseas Umbrella Linden	2.5' CAL.
U	U	4	Ulmus parvifolia	Chinese Elm	2.5' CAL.
+	G	31	See notes	Common Name	5 gal
+	R	44	Rosa 'Pink Knockout'	Knockout Rose	5 gal
+	BP	306	Large species Big Blue'	Big Blue Linum	2 gal

### LANDSCAPE NOTES

- GENERAL NOTES
- LANDSCAPE PLAN IS PRELIMINARY AND SUBJECT TO CHANGE
- SITE TOPOGRAPHY AND EXISTING CONDITIONS ARE BASED ON SURVEY FROM CHEAPSKAPE ENVIRONMENTAL MANAGEMENT INC., DATED OCTOBER 2017
- SITE EXISTING CONDITIONS SUPPLEMENTED BY BALTIMORE CITY GIS DATA, SITE TOPOGRAPHY BASED ON BALTIMORE CITY GIS DATA
- CONTRACTOR SHALL CONTACT 'MISS UTILITIES' AND SHALL VERIFY THE LOCATION OF ALL UNDERGROUND UTILITIES WITHIN THE PROJECT PRIOR TO THE INSTALLATION OF PLANT MATERIAL
- TREES SHALL BE LOCATED A MINIMUM OF 8' FROM SANITARY AND WATER CONNECTIONS. CONTRACTOR SHALL BE LIABLE FOR DAMAGE TO ANY AND ALL PUBLIC AND PRIVATE UTILITIES IF NECESSARY, THE CONTRACTOR MAY SLIGHTLY ADJUST PLANT LOCATIONS IN THE FIELD TO BE CLEAR OF OBSTACLES, SWALES AND UTILITIES. FINISHED PLANTING BEDS SHALL BE GRADED SO AS NOT TO WASTE DRAINAGE FROM BUILDINGS.

### PLANT MATERIAL

- ALL PLANT MATERIAL AND ROOT BALLS SHALL CONFORM TO THE STANDARDS OF NURSERY STOCK OF THE AMERICAN ASSOCIATION OF NURSERMEN.
- TREES AND SHRUBS SHALL BE TYPICAL OF THEIR SPECIES AND VARIETY. HAVE NORMAL GROWTH HABITS, WELL DEVELOPED, DENSELY FOLIATED BRANCHES, AND VIGOROUS, FIBROUS ROOT SYSTEMS.
- TREES AND SHRUBS SHALL BE FRESH, YOUNG AND NURSERY GROWN. THEY SHALL HAVE BEEN GROWN UNDER CLIMATE CONDITIONS SIMILAR TO THOSE IN THE LOCALITY OF THE PROJECT OR PROPERLY ACCLIMATED TO CONDITIONS OF THE LOCALITY OF THE PROJECT.
- TREES AND SHRUBS SHALL BE FREE FROM INSECTS AND NURSERY DISEASES IDENTIFIED BY APPROPRIATE GENERAL AND STATE AUTHORITIES TO BE FREE OF DISEASE AND PEST INFESTATIONS.
- ALL CONTAINER GROWN MATERIAL SHALL BE HEALTHY, VIGOROUS, WELL-ROOTED PLANTS AND ESTABLISHED IN THE CONTAINER IN WHICH THEY ARE SOLD. THE PLANTS SHALL HAVE TENDRONS WHICH ARE GOOD QUALITY AND ARE IN A HEALTHY GROWING CONDITION.

### PLANT GUARANTEE

- THE LANDSCAPE CONTRACTOR SHALL GUARANTEE ALL PLANT MATERIAL FOR A PERIOD OF ONE (1) FULL YEAR AFTER THE DATE OF SUBSTANTIAL COMPLETION AGAINST DEFECTS, UNSATISFACTORY GROWTH, DISEASE OR DEATH.
- UNSATISFACTORY, UNHEALTHY, DRYING OR DEAD PLANT MATERIAL (IN THE OPINION OF THE LANDSCAPE ARCHITECT) SHALL BE REPLACED WITH THE SAME SIZE AND SPECIES.
- IT SHALL BE THE RESPONSIBILITY OF THE LANDSCAPE CONTRACTOR TO ADEQUATELY AND PROPERLY MAINTAIN THE CLEARING AREAS, WHICH SHALL INCLUDE WATERING, REPLACEMENT OF DEAD OR DISEASED PLANTINGS, AND FERTILIZING TO MAINTAIN HEALTHY GROWTH FOR THE GUARANTEE PERIOD.

### LANDSCAPE INSPECTIONS

- THE CONTRACTOR SHALL NOTIFY THE LANDSCAPE ARCHITECT TO SCHEDULE THE INITIAL LANDSCAPE INSTALLATION INSPECTION ONCE ALL OF THE PLANT MATERIAL HAS BEEN INSTALLED. INSPECTION APPROVAL WILL REQUIRE THAT ALL THE PLANT MATERIAL WAS INSTALLED IN A MANNER CONSISTENT WITH THE GOALS OF THE APPROVED LANDSCAPE PLAN. UPON WRITTEN APPROVAL OF THE INITIAL LANDSCAPE INSTALLATION, THE 1-YEAR GUARANTEE/REPLACEMENT PERIOD WILL BEGIN.
- ONCE THE 1-YEAR GUARANTEE/REPLACEMENT PERIOD HAS CONCLUDED, THE LANDSCAPE CONTRACTOR SHALL NOTIFY THE LANDSCAPE ARCHITECT THAT THE PLANT MATERIAL HAS ALL SURVIVED AND/OR BEEN REPLACED AND REQUEST THE FINAL LANDSCAPE INSPECTION.

**MERCY MEDICAL - CALVERT**  
PREPARED FOR  
**MERCY HEALTH SERVICES**

BALTIMORE, MD

**LANDSCAPE PLAN**

K+H PROJECT  
114025000  
DATE  
02/16/2018  
SCALE AS SHOWN  
DESIGNED BY WLD  
DRAWN BY STM  
CHECKED BY WLD

**Kimley»Horn**

© 2018 KIMLEY-HORN AND ASSOCIATES, INC.  
215 L FORT AVE., SUITE 304, BALTIMORE, MD 21230  
PHONE: 443-743-3470  
WWW.KIMLEY-HORN.COM

CALL 48 HOURS BEFORE YOU DIG  
ITS THE LAW!  
DIAL 811

811  
Call before you dig

LANDSCAPE PLAN  
SCALE: 1" = 10'

GRAPHIC SCALE IN FEET  
0 5 10 20

343 N CALVERT ST  
MERCY MEDICAL CENTER, INC.  
FAC # 13180/201

343 N CALVERT ST  
MERCY MEDICAL CENTER, LLC  
SER 5203 217

343 N CALVERT ST  
SER 5203 217

REVISIONS

NO.	DATE	DESCRIPTION

PROJECT: MERCY MEDICAL - CALVERT

SHEET NUMBER: L1.00

DATE: 02/16/2018

SCALE: 1" = 10'