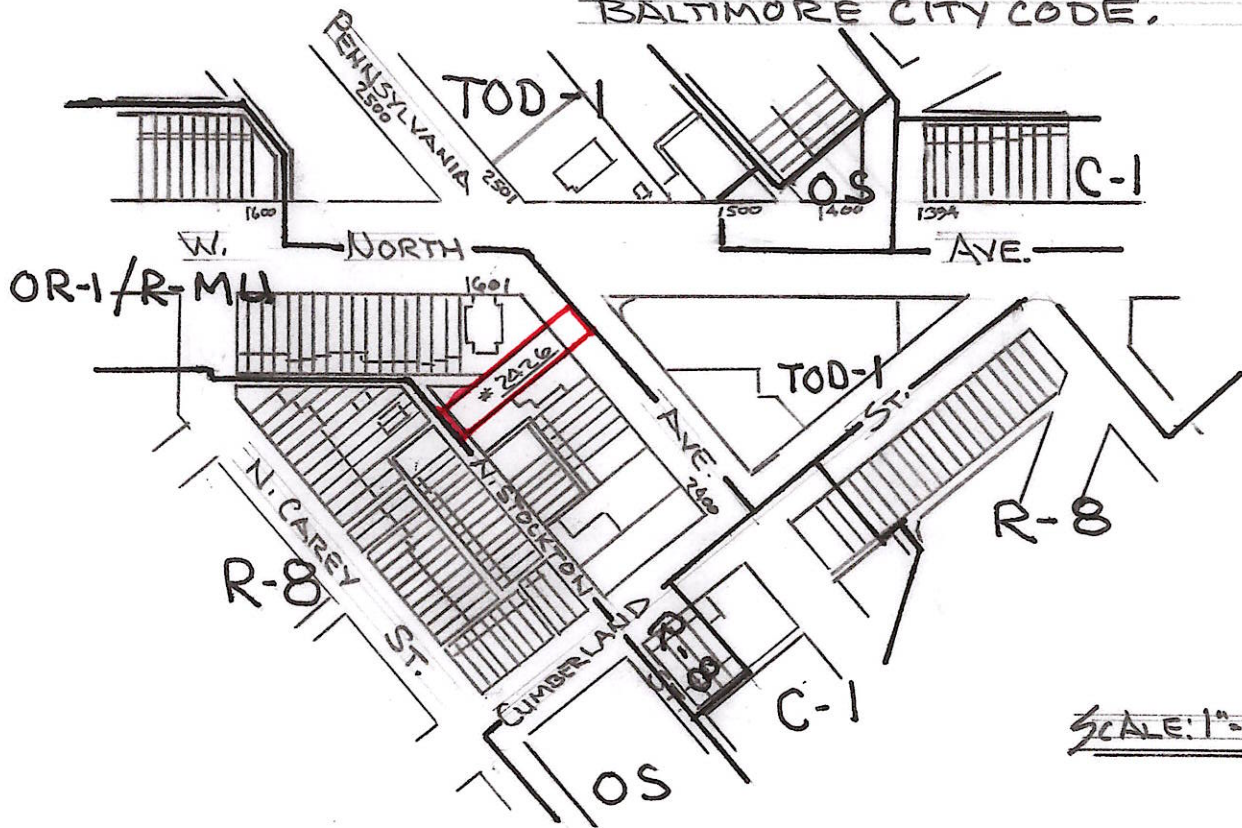
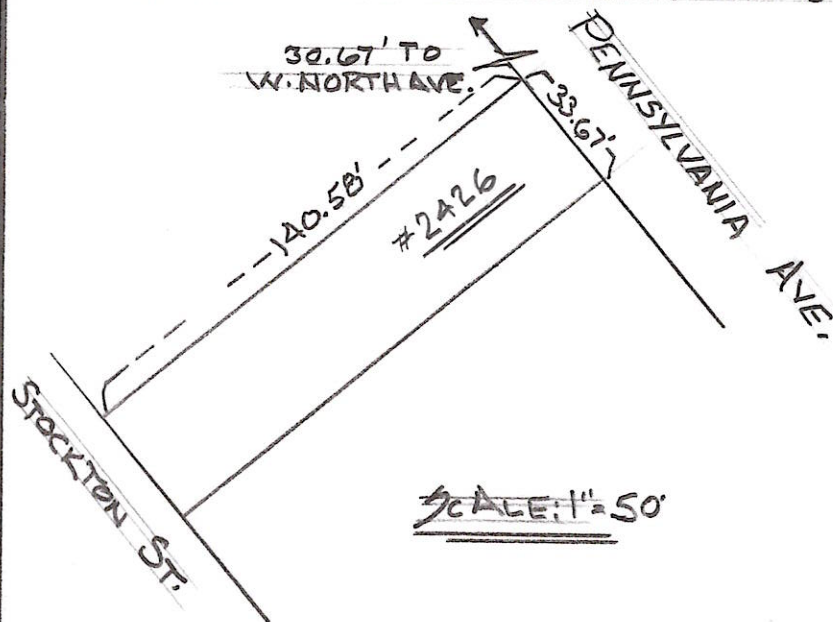


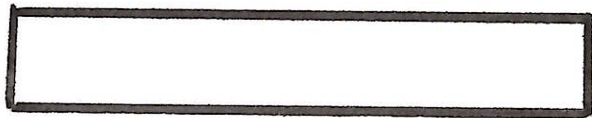
SHEET #44 OF THE ZONING DISTRICT MAPS OF THE
BALTIMORE CITY CODE.



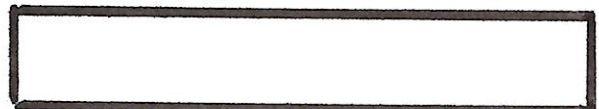
AREA OUTLINED IN RED TO BE CHANGED
FROM: THE OR-1/R-MU ZONING DISTRICT
TO: THE C-1-E ZONING DISTRICT



FOR:
THE ARCH SOCIAL CLUB, INC.
% ALFRED W. BARRY, III
AB ASSOCIATES
201 E. BALTIMORE ST. -
SUITE 1150
BALTIMORE, MD. 21202



MAYOR



PRESIDENT CITY COUNCIL

RDS