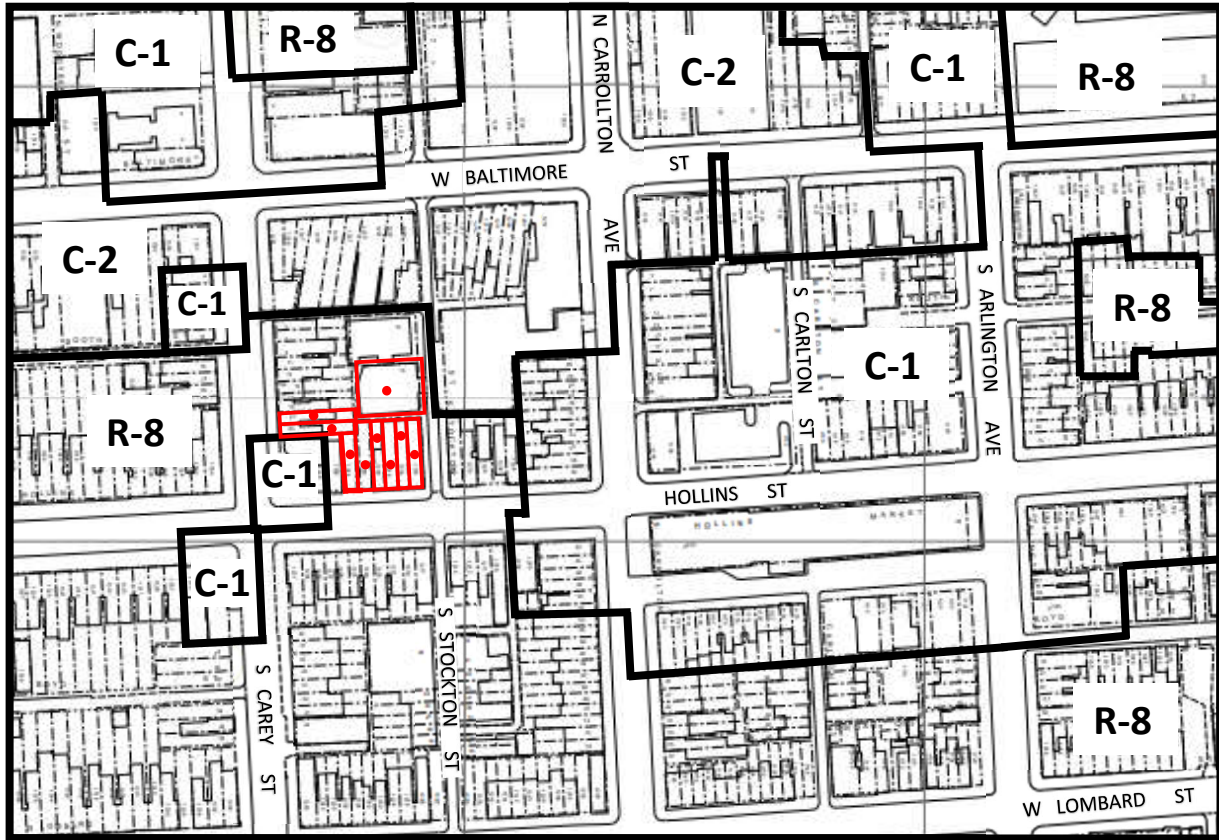


**SHEET NO. 54 OF THE ZONING MAP OF  
THE ZONING CODE OF BALTIMORE CITY**



Scale: 1" = 200'

In Connection With The Properties Known As Nos.

1214-1224 HOLLINS STREET  
WARD 18 SECTION 5  
BLOCK 216 LOTS 53-58

21-23 SOUTH CAREY STREET  
WARD 18 SECTION 5  
BLOCK 216 LOTS 47-48

14 SOUTH STOCKTON STREET  
WARD 18 SECTION 5  
BLOCK 216 LOT 74

The Applicant Wishes To Request The Rezoning  
Of The Aforementioned Properties From  
R-8 Zoning District to C-1 Zoning District,  
As Outlined In Red Above.

\_\_\_\_\_

MAYOR

\_\_\_\_\_

PRESIDENT CITY COUNCIL



Scale: 1" = 60'

1214-1224 HOLLINS STREET  
 21-23 SOUTH CAREY STREET  
 14 SOUTH STOCKTON STREET

Sheet #2