

DRUID LAKE VISION PLAN

City Council Hearing

October 18, 2022




**Unknown
Studio**



**TOOLE
DESIGN**



An aerial photograph of a large, calm lake surrounded by dense green trees. A long, curved wooden pier extends from the left side towards the center of the lake. Several people are walking on the pier. In the water, there are several swans, a rowing team in a long boat, and a pink inflatable ring. The sky is overcast with soft clouds.

1. History & Context

1. The Future of Druid Park

A **Nexus** of Investment & Infrastructural Improvements (Tanks, Druid Park Lake Drive, Lake)

1. Project Principles

1. Druid Lake Vision Plan

Recreation

Ecology

Connectivity

1. Momentum & Phasing

1. Next Steps: We Need You!

Deliver a Vision Worthy of the Nation's Great Public Parks



Fairmount Park
Philadelphia
1812



Central Park
New York City
1858



Druid Hill Park
Baltimore
1860

Addressing Access and Injustice



The Park was named Druid Hill in tribute to the ancient Druids' love of trees



Families picnicking at Druid Hill Park in 1956



The construction of the Jones Falls Expressway severed the connection between the surrounding neighborhoods and the park

Project Areas

**Tanks
Project
\$140m+**

**Druid Lake
Vision Plan
\$50m**

**Druid Park
Lake Drive
\$100m+?**



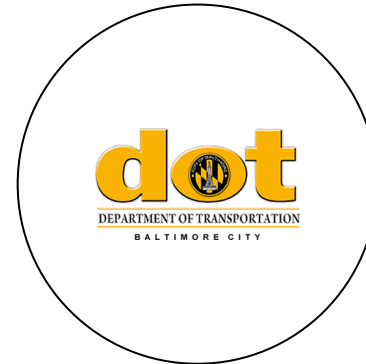
Major Projects and Agencies

**Druid Lake &
Druid Hill Park**



**Tanks
Project**

**Neighborhood
Planning
Initiatives**



**Druid Park
Lake Drive**

Delivering Through Interagency Partnership

**Druid Lake &
Druid Hill Park**



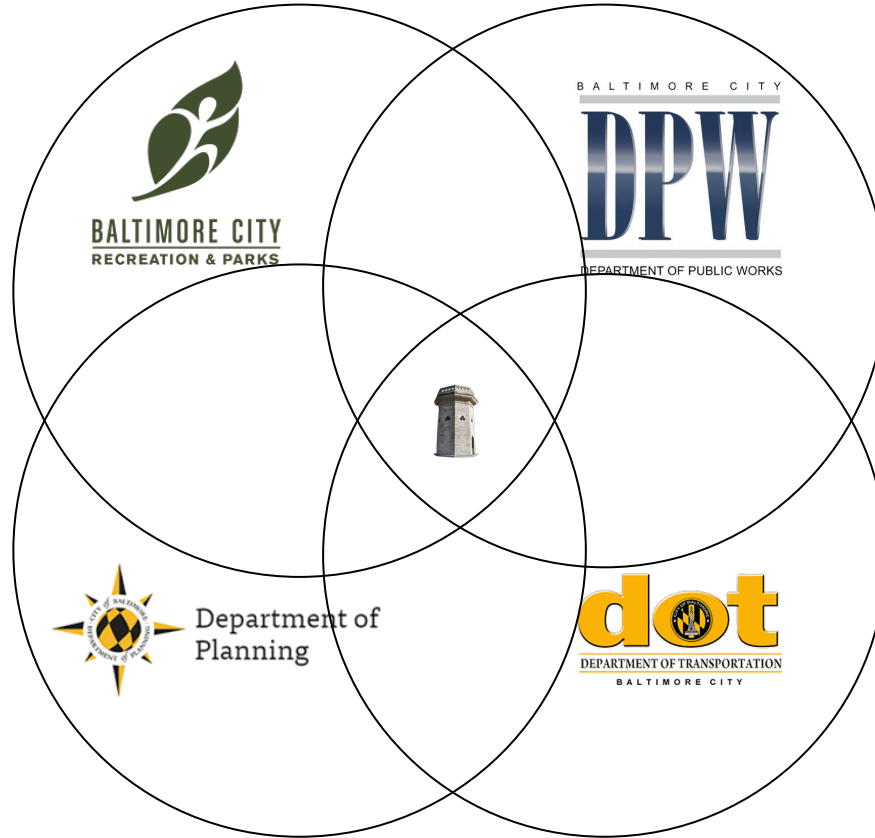
**Tanks
Project**



**Neighborhood
Planning
Initiatives**

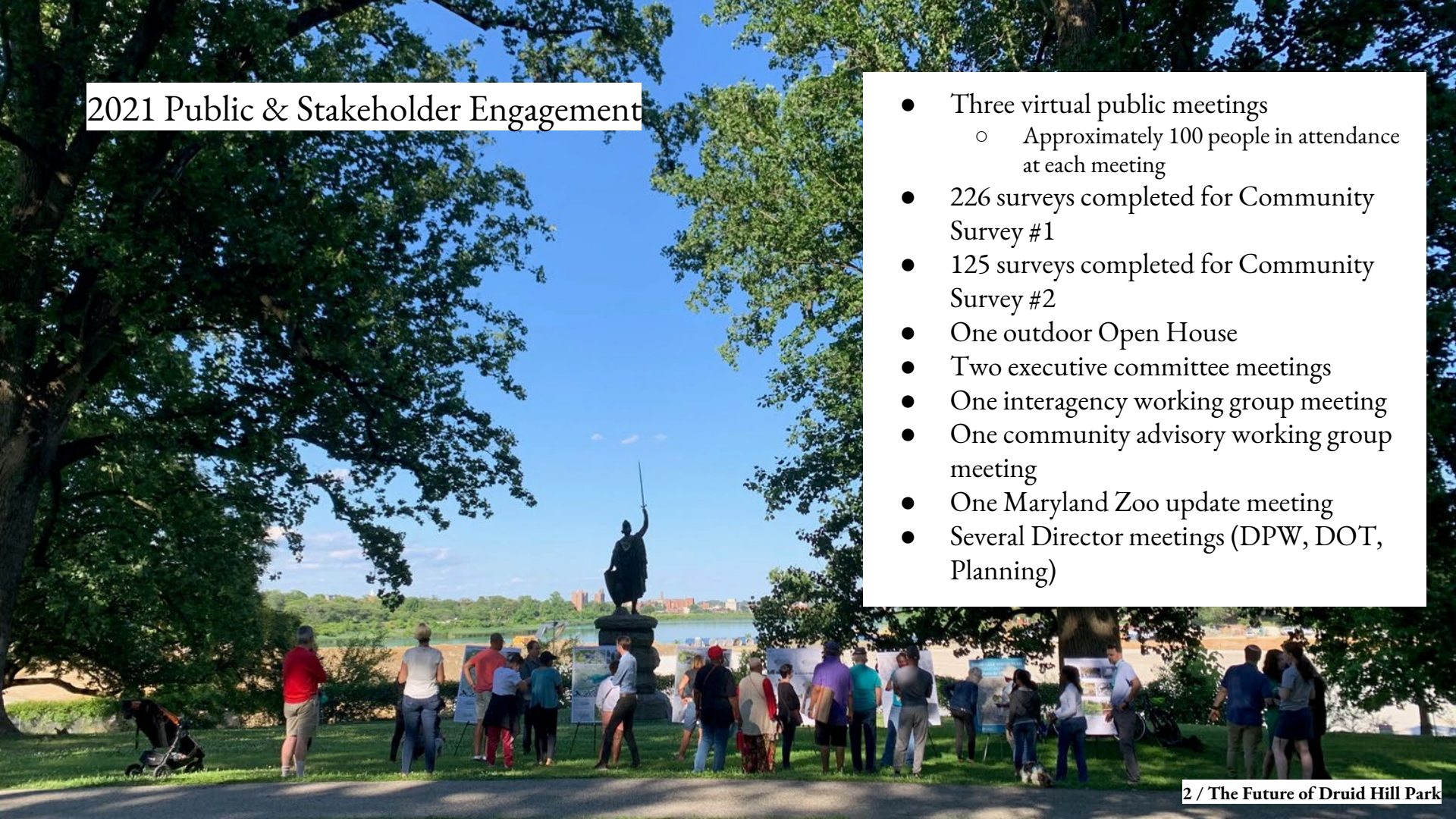


**Druid Park
Lake Drive**



2021 Public & Stakeholder Engagement

- Three virtual public meetings
 - Approximately 100 people in attendance at each meeting
- 226 surveys completed for Community Survey #1
- 125 surveys completed for Community Survey #2
- One outdoor Open House
- Two executive committee meetings
- One interagency working group meeting
- One community advisory working group meeting
- One Maryland Zoo update meeting
- Several Director meetings (DPW, DOT, Planning)





Druid Lake Vision Plan - Four Design Principles

1. Go big - Deliver a Vision Worthy of the Nation's Great Public Parks
1. Proactively Welcome through Community Programming
1. Reinvent the Reservoir as an Ecological, Interconnected, Recreational Lake
1. **Deliver Restorative Justice for an Accessible Park**



Druid Lake Vision Plan



Aerial looking north



Today at the Lake - Northwest shoreline



Proposed - Northwest Rocky shoreline



CAFE / BOATHOUSE

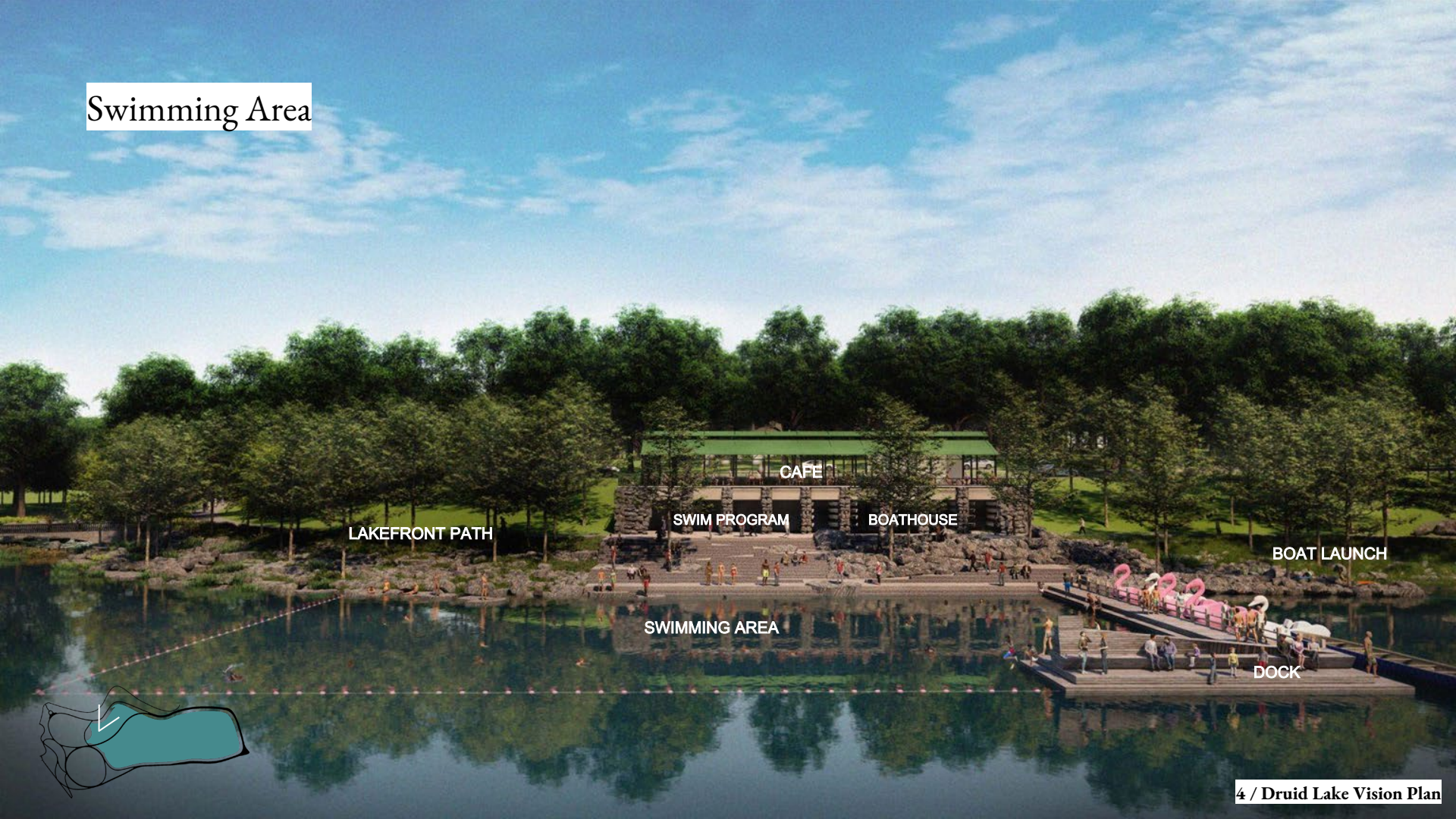
SWIMMING AREA

BOATING AREA

LAKE
PROMENADE



Swimming Area



LAKEFRONT PATH

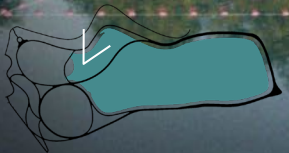
SWIM PROGRAM

BOATHOUSE

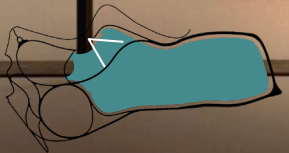
BOAT LAUNCH

SWIMMING AREA

DOCK



Cafe View





Boat Launch - Looking West

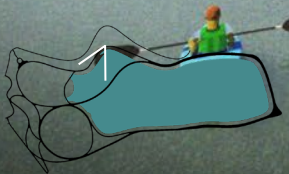


CAFE/BOATHOUSE

LORD GROGU

BOAT LAUNCH

LAKEFRONT PATH



Outdoor Education Building



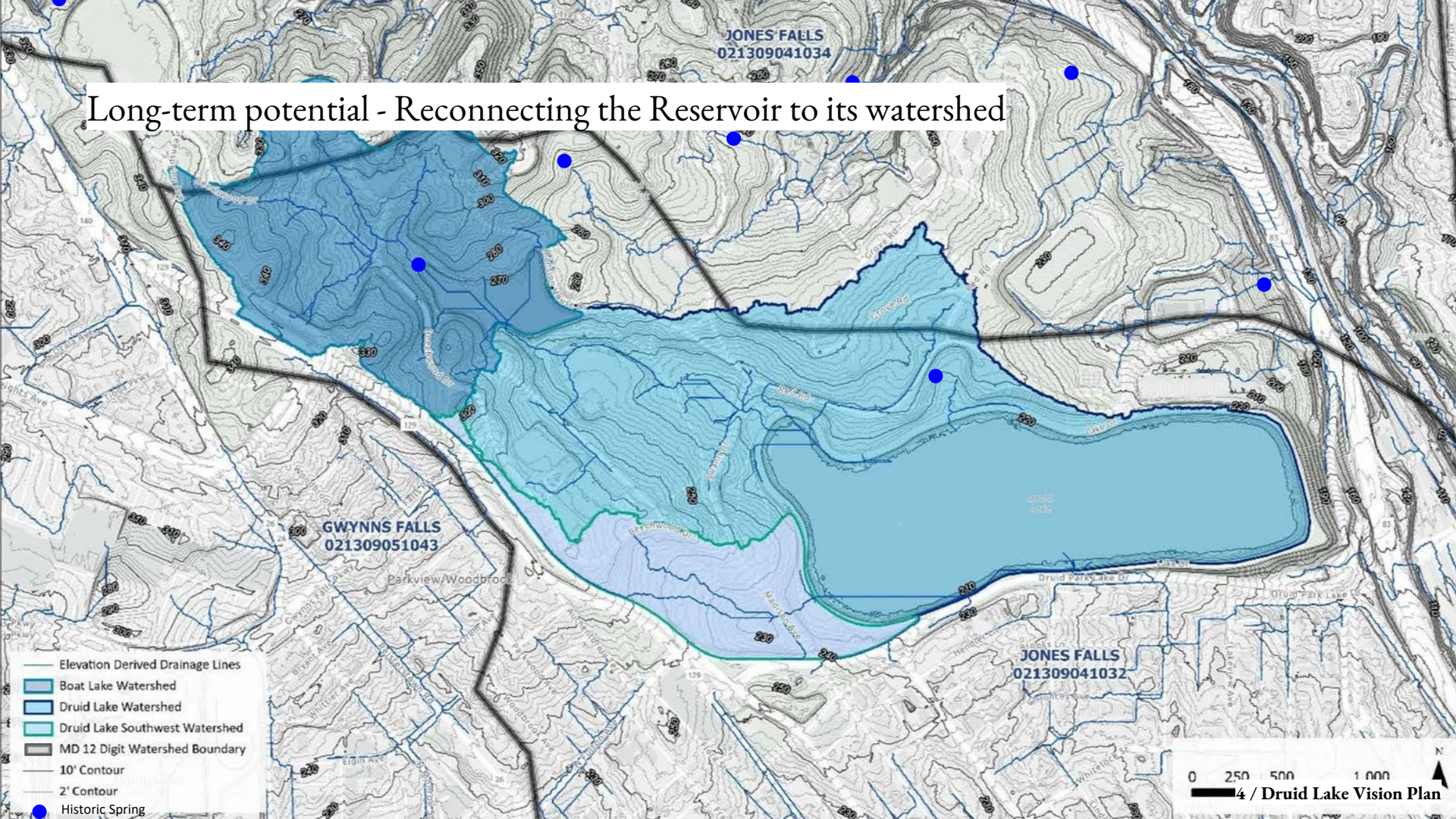
LAKEFRONT
PROMENADE



Amphitheater with Canopy

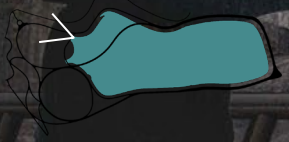


Long-term potential - Reconnecting the Reservoir to its watershed

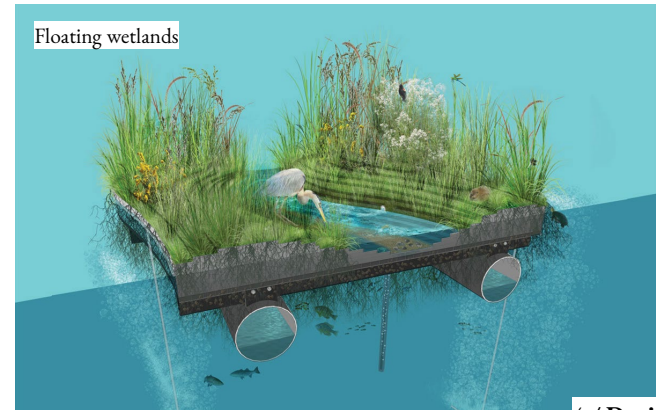


- Elevation Derived Drainage Lines
- Boat Lake Watershed
- Druid Lake Watershed
- Druid Lake Southwest Watershed
- MD 12 Digit Watershed Boundary
- 10' Contour
- 2' Contour
- Historic Spring

Cascade Looking Northwest



Druid Lake Habitat Zone & Living Shoreline



Rocky Edge Living Shoreline



Living Shoreline & Lake System

An Emerging Biodiversity



Lesser Scaup
Aythya affinis

Double crested Cormorant
Phalacrocorax auritus

Damselfly (*Calopteryx*)
Caddisfly (*Neophylax*)
Spring Stonefly
(*Amphinemura*)



Golden shiner
Notemigonus
crysoleucas



Northern Two-Lined Salamander
Eurycea bislineata

Great Blue Heron
Ardea herodias



Red winged Blackbird
Agelaius phoeniceus

American Woodcock
Scolopax minor



Amphipod (*Crangonyx*)
Isopod (*Caecidotea*)



Bluegill Sunfish
Lepomis macrochirus



American Black Duck
Anas rubripes



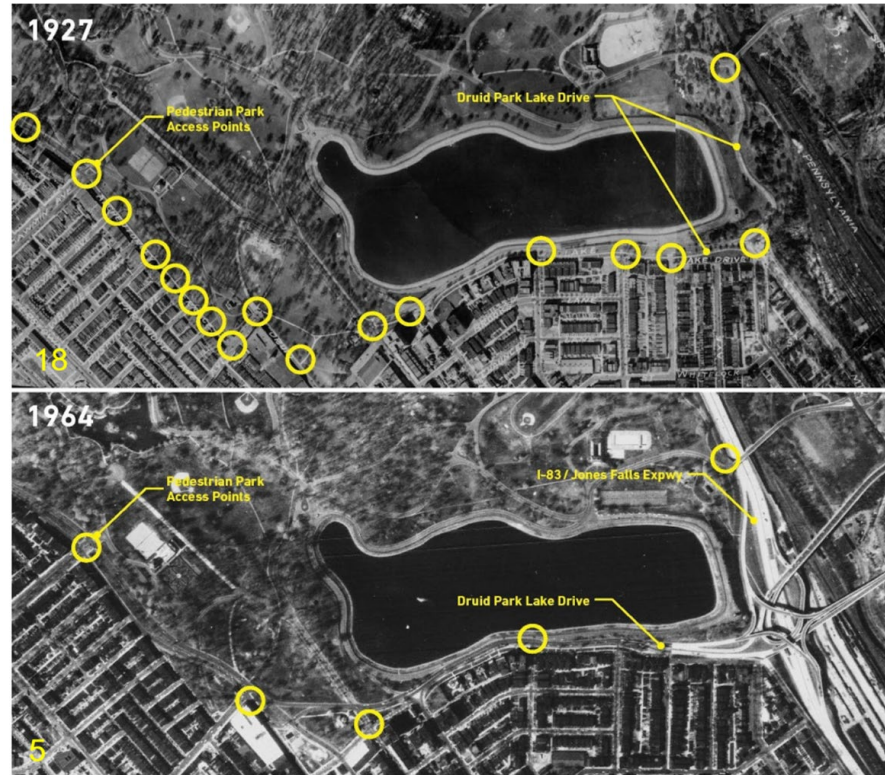
American Wigeon
Mareca americana

PHASE 0 -1

PHASES 2 - 3

PHASE 4

Park Access & Racial Justice



The construction of the JFX and conversion of Druid Park Lake Drive into multi-lane arterial road reduced neighborhood access points from 18 to 5.

DPLD Existing Conditions



DPLD - Looking East



What's Next?





MEADOW

SHRUB
LIVING SHORELINE

FLOATING
WETLANDS

FISHING
PIER

ISLAND

FORESTED
WETLAND

AMPHITHEATER

ROCKY
LIVING SHORELINE

WETLAND POOL

FORESTED
WETLAND

STREAM VALLEY
(RSC)

ENTRY PLAZA

ENTRY PLAZA

Aerial looking southeast



Druid Lake Vision Plan - Phase 1



Druid Lake Vision Plan - Phase 2



Druid Lake Vision Plan - Phase 3 and beyond



OUTDOOR EDUCATION

WOODLAND LIVING SHORELINE

SHRUB LIVING SHORELINE

MEADOW

FISHING PIER

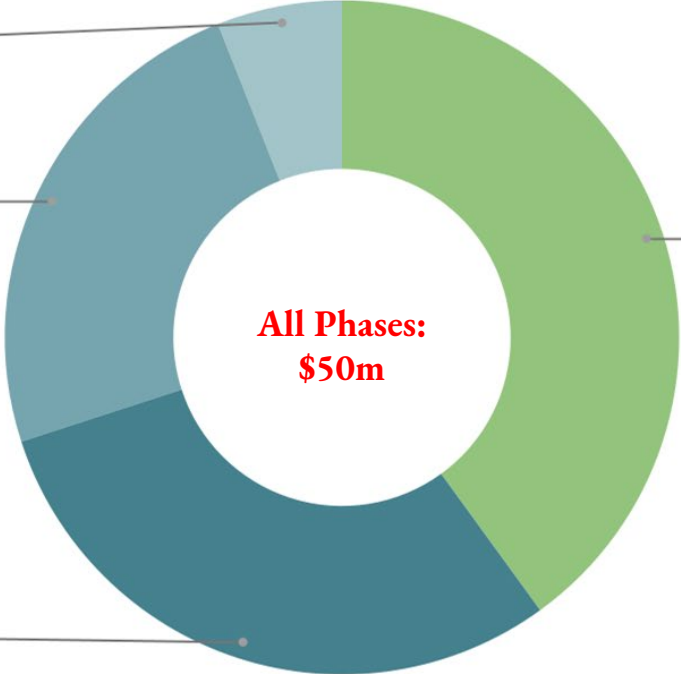
FLOATING WETLANDS

Preliminary Cost Estimate - All Phases

Phase 4:
Druid Lake Park Drive Plazas
\$3 Million

Phase 3:
Boathouse & Outdoor Education Bldgs
\$12 Million

Phase 2:
Bridges, Western Shore, Stream Valley
\$15 Million



Phase 1:
Islands, Water Access, Loops
\$20 Million

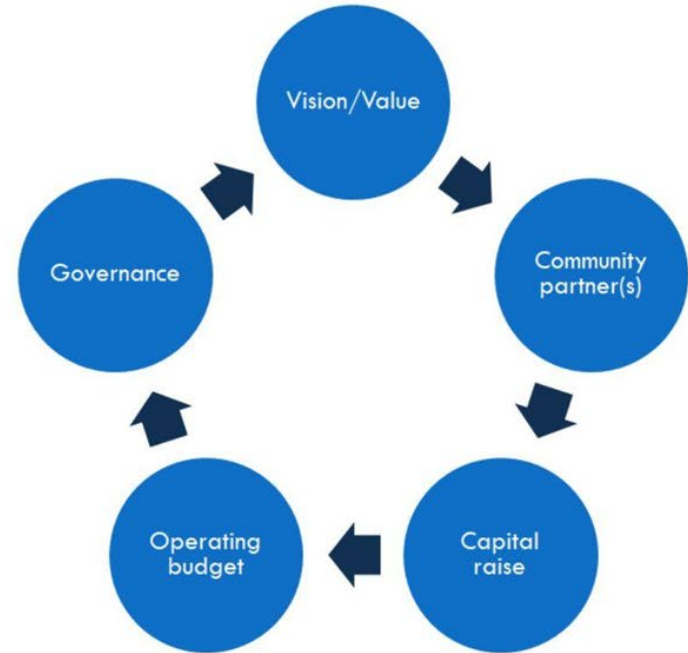
Druid Hill Park: Investment & Uplift in the Neighborhood, the City, and beyond

Development without Displacement



Financing Strategy

1. Guiding principles critical to allow for realistic conversations about sources for operating funding
2. Community partners necessary to vision design
3. Capital raising not solely funded by income and fundraising- public funds a critical base
4. Credible operating budget estimates necessary for further funding approval
5. Governance iterative and often requires not-for-profit partners



Delivering Through Interagency Partnership

**Druid Lake &
Druid Hill Park**



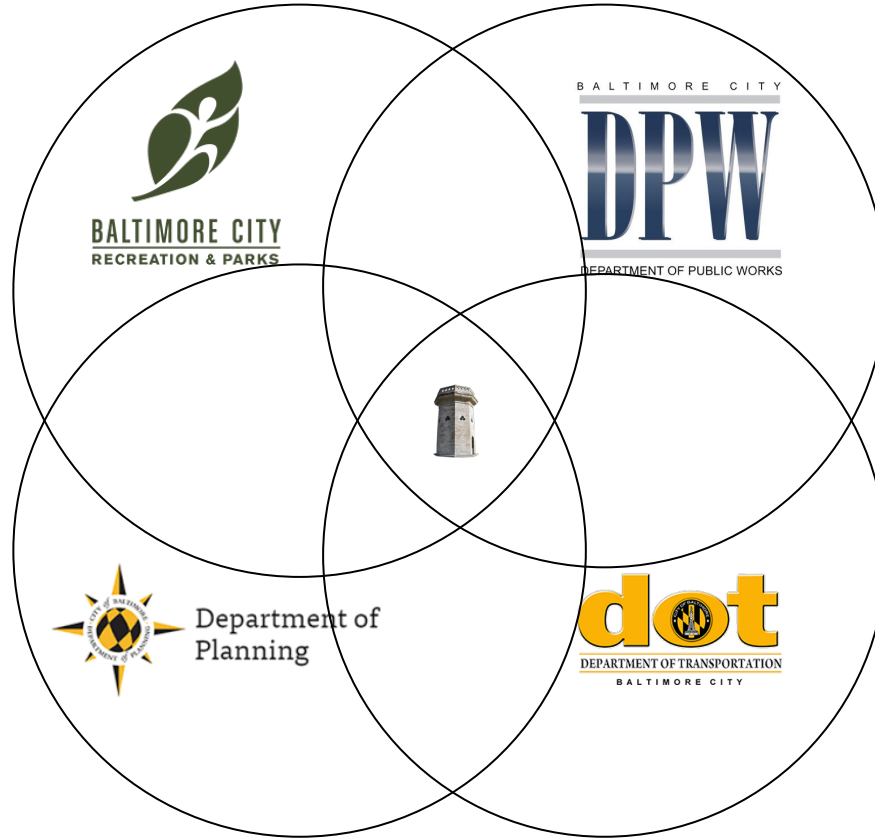
**Tanks
Project**



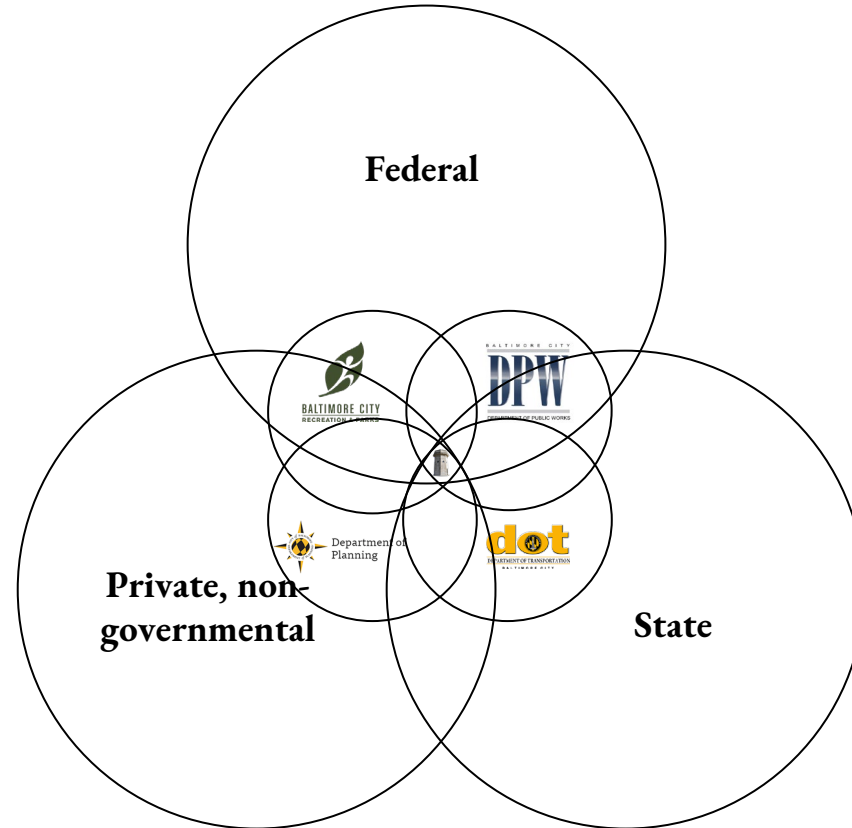
**Neighborhood
Planning
Initiatives**



**Druid Park
Lake Drive**



Federal, State, and Non-Governmental Support



Anticipate Groundbreaking Infrastructure Funding Opportunities

Biden Seeks to Use Infrastructure Plan to Address Racial Inequities

The president's \$2 trillion proposal allocates money to help communities of color, like a New Orleans neighborhood devastated by a highway project a half-century ago.



President Biden's infrastructure proposal includes \$20 billion to "reconnect" communities of color to economic opportunity, among other provisions intended to address longstanding racial inequities. Anna Moneymaker for The New York Times



The Reconnecting Communities Act will address the legacy of highway construction built through communities, especially through low-income communities and communities of color, that divided neighborhoods and erected barriers to mobility and opportunity. This new grant program would fund community engagement and capacity building, as well as planning and construction of projects to remove or retrofit infrastructure barriers like highway overpasses and depressed highways. As communities across the nation are beginning to reimagine their downtowns to provide more sustainable and equitable access, this legislation will support local efforts to reconnect and revitalize areas that were harmed by the construction of the Interstate Highway System.

Summary

This legislation establishes a grant program at the Department of Transportation to help communities identify and remove or remediate infrastructural barriers that create obstacles to mobility or economic development, or expose the community to air pollution or other health and safety risks. It would create three categories of grants:

- **Community Engagement, Education, and Capacity Building Grants:** These grants would fund efforts to educate community members, build community capacity, identify local needs, form community boards, and engage community members in transportation planning. Funds would expand the ability of community members to participate in transportation and economic development decision-making to ensure investments address community needs. Local and Tribal governments, MPOs, and nonprofit organizations would be eligible recipients of community engagement, education, and capacity building grants.
- **Planning and Feasibility Grants:** These grants would fund state and local planning activities to design projects and study traffic, access, and equity impacts, assess the project feasibility, conduct public engagement and environmental review, and establish a community land trust to develop real estate created by the project. State, local, Tribal governments, MPOs, and nonprofit organizations would be eligible recipients of planning and feasibility grants.
- **Capital Construction Grants:** These grants would fund construction activities to remove or retrofit an infrastructural barrier in a way that enhances community connectivity, including by capping or replacing it with an at-grade roadway; improving connectivity across a barrier; replacing the facility with a new use like a public park or trail; and other projects that would address the mobility needs of the community. Grants would go to the owner of the infrastructure asset, with whom State, local, Tribal government, MPOs, and nonprofit organizations could partner to be eligible recipients of capital construction grants.

POLITICS

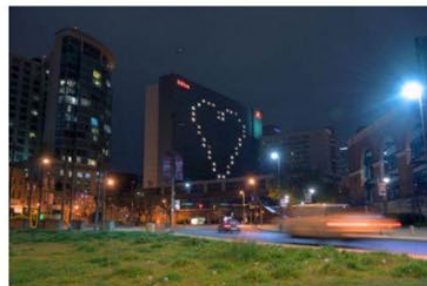
How Baltimore is planning to spend \$670 million in latest federal COVID relief aid

By EMILY OPILO
BALTIMORE SUN | MAY 03, 2021



When Baltimore received its first federal aid to help deal with the effects of the coronavirus, the city was in the grip of the worst of the pandemic-fueled crisis. The funds were quickly doled out in dozens of directions, paying for protective gear, aid for businesses and COVID-19 testing efforts.

Now, nearly two months after it was announced the city would receive [\\$670 million from the American Rescue Plan](#), Democratic President Joe Biden's economic relief effort, city officials have yet to announce a plan to distribute it.



Lights in the Hilton Baltimore Inner Harbor's rooms show a heart on Saturday, April 4, 2020, as few commuters head downtown. (Karl Merton Ferron/The Baltimore Sun)

Druid Hill Park - Possible Governance

BCRP & Public
Agencies



Private /
Non-profit
Partners





Thank You