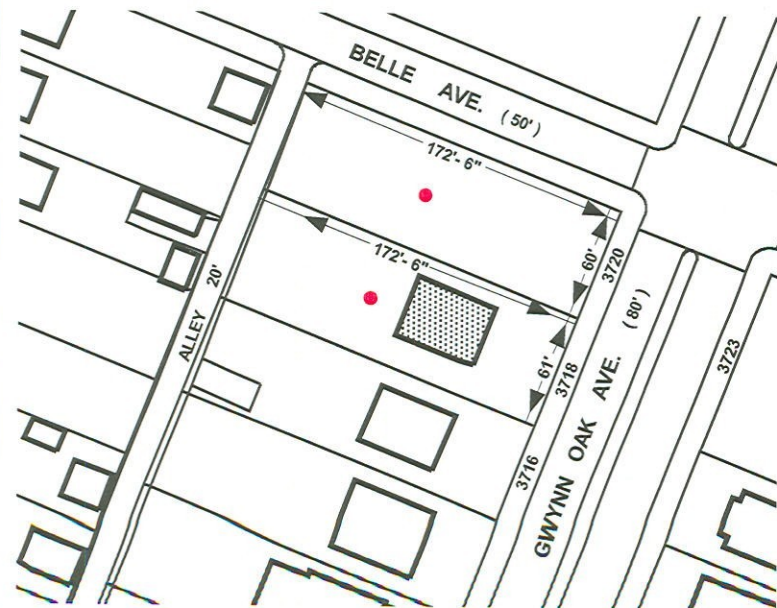


1" = 200'



1" = 100'

Note:

In Connection With Property Known As Nos. 3718 - 3720 GWYNN OAK AVENUE. The Applicant Wishes To Request The Conditional Use Of The Aforementioned Properties As A PARKING LOT, As Outlined In Red Above.

WARD - 28 SECTION - 2 BLOCK - 8245
LOTS - 4 & 4A

MAYOR

PRESIDENT CITY COUNCIL

09-0415