

SHEET NO. 65 OF THE ZONING DISTRICT MAP OF THE BALTIMORE CITY ZONING CODE.



1" = 200'

In Connection With Properties Known As Nos. 101-107 And 117-121 WEST CROSS STREET. The Applicant Wishes To Request The Zoning Change Of The Aforementioned Properties From M-2-2 Zoning District To B-2-4 Zoning District, As Outlined In Blue Above.

**WARD - 23 SECTION - 7
BLOCK - 947 LOTS - 1 & 3**

In Connection With Properties Known As Nos. 123, 125, 127, 129, 131, 133 And 135 WEST CROSS STREET And 1103, 1105, 1107, 1109 And 1111 LEADENHALL STREET. The Applicant Wishes To Request The Zoning Change Of The Aforementioned Properties From R-7 Zoning District To B-2-4 Zoning District, As Outlined In Red Above.

**WARD - 23 SECTION - 7 BLOCK - 947
LOTS - 4, 5, 6, 7, 8, 9, 10, 11, 12, 13, 14 & 15**

In Connection With Properties Known As Nos. 1135 LEADENHALL STREET And 138 WEST WEST STREET. The Applicant Wishes To Request The Zoning Change Of The Aforementioned Properties From M-3 Zoning District To B-2-4 Zoning District, As Outlined In Green Above.

**WARD - 23 SECTION - 7
BLOCK - 947 LOTS - 16 & 30**

In Connection With Properties Known As Nos. 1110 And 1112 RACE STREET. The Applicant Wishes To Request The Zoning Change Of The Aforementioned Properties From O-R-3 Zoning District To B-2-4 Zoning District, As Outlined In Yellow Above.

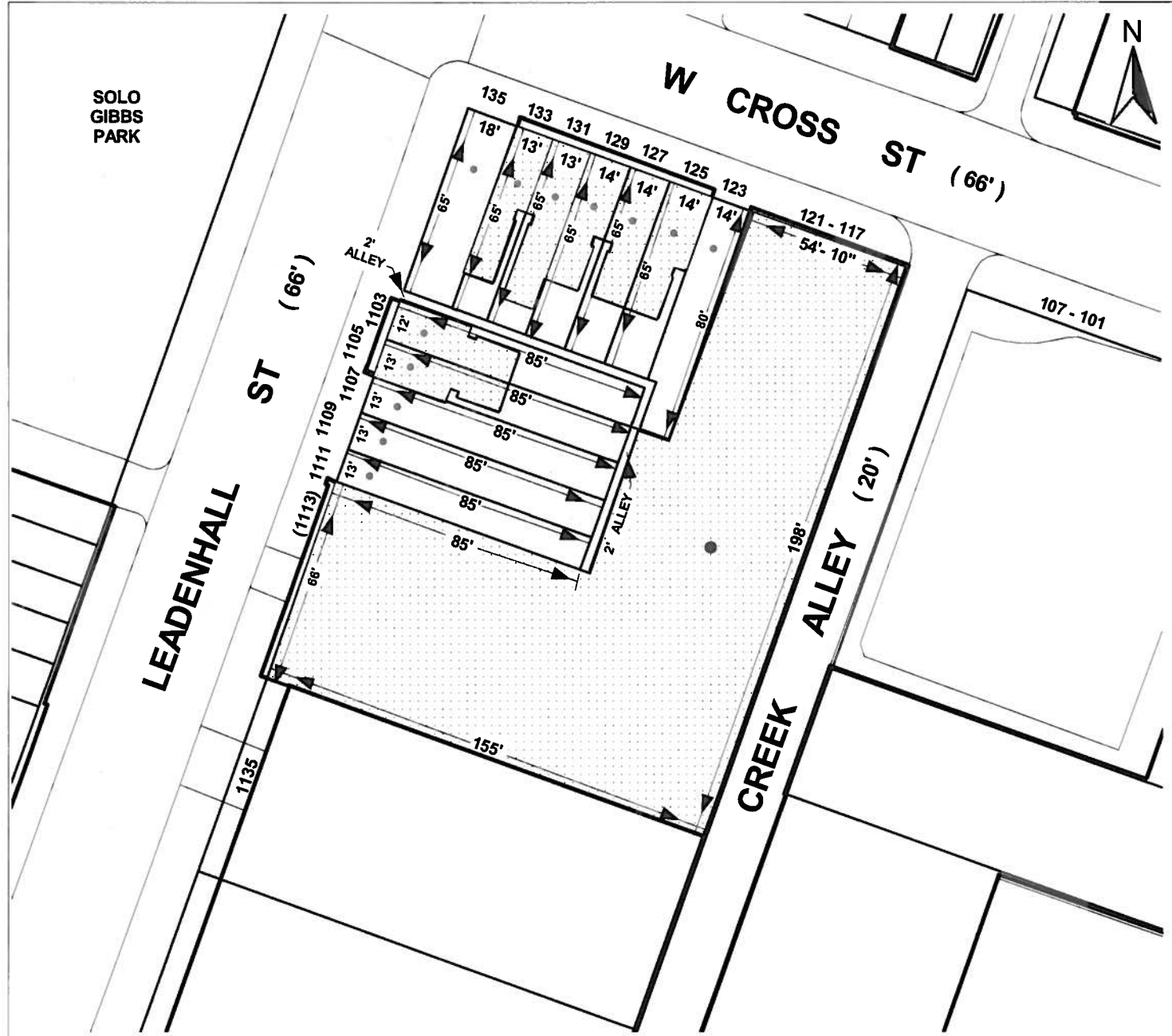
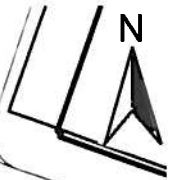
**WARD - 23 SECTION - 7
BLOCK - 947 LOTS - 39 & 43**

MAYOR

PRESIDENT CITY COUNCIL

313

SOLO
GIBBS
PARK



1" = 50'

**117-121, 123, 125, 127, 129, 131, 133 And 135 WEST CROSS STREET
And
1103, 1105, 1107, 1109 And 1111 LEADENHALL STREET.**

Sheet 2 of 5



W CROSS ST
(66')

121 - 117

107 - 101
155'

132'

CREEK ALLEY
(20')

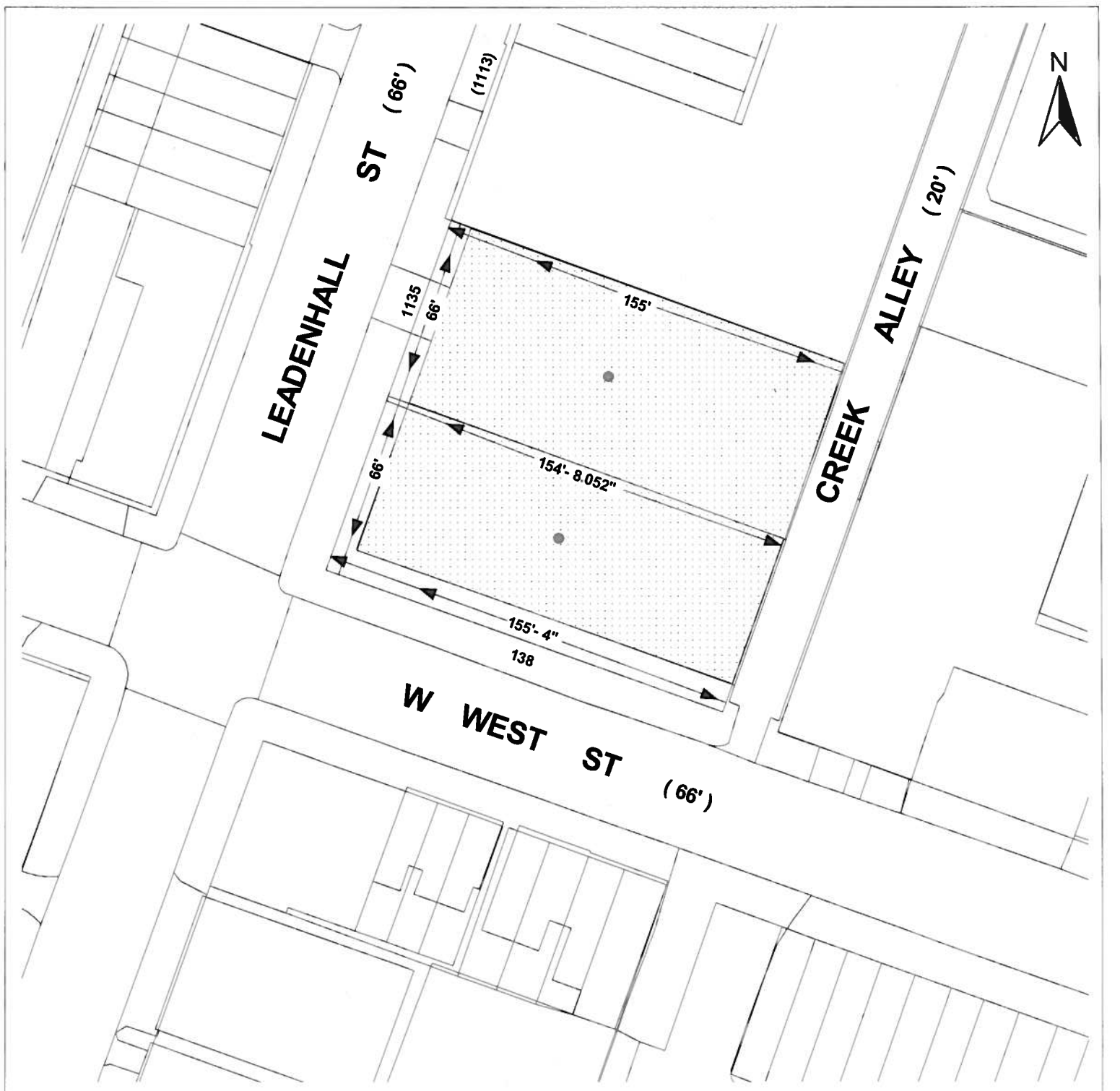
RACE ST
(66')

1110

1" = 50'

101 - 107 WEST CROSS STREET

Sheet 3 of 5



1" = 50'

138 WEST WEST STREET
1135 LEADENHALL STREET

Sheet 4 of 5



1" = 50'

1110 And 1112 RACE STREET

Sheet 5 of 5