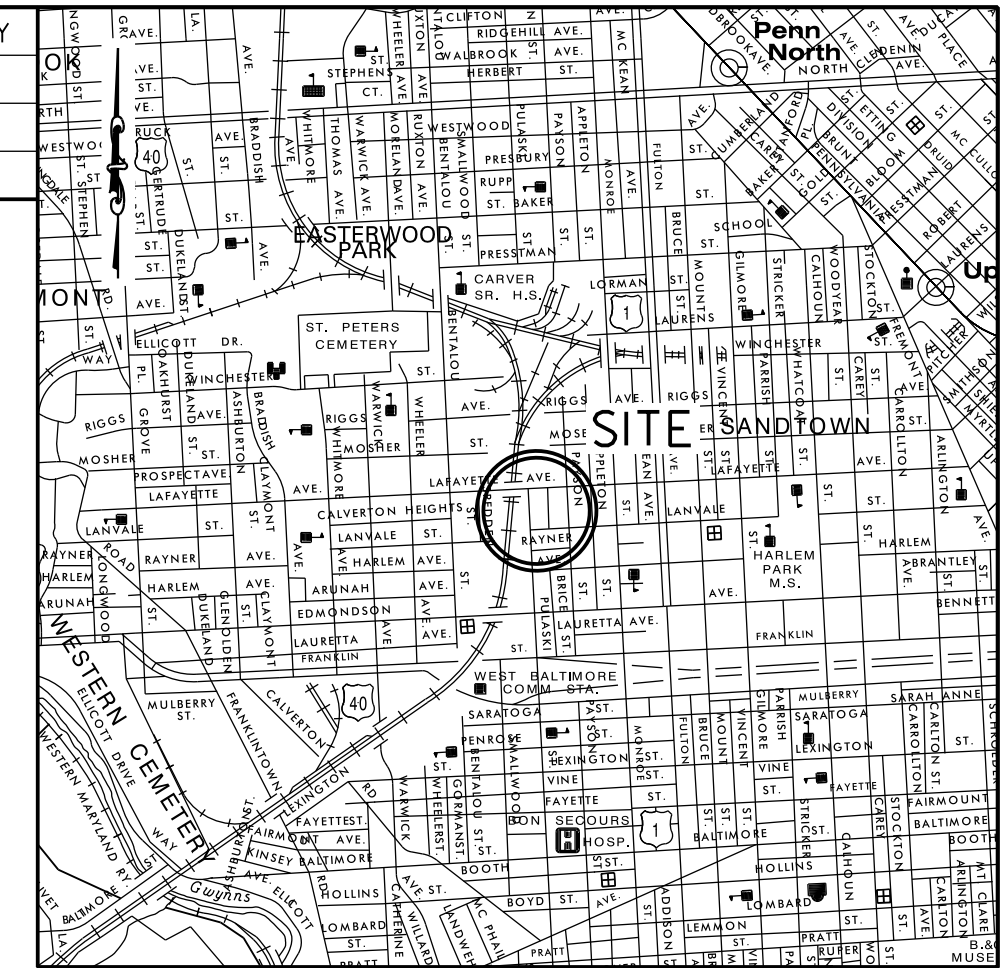


BALTIMORE CITY SURVEY CONTROL SYSTEM

NATIONAL RAILROAD PASSENGER CORPORATION (AMTRAK)

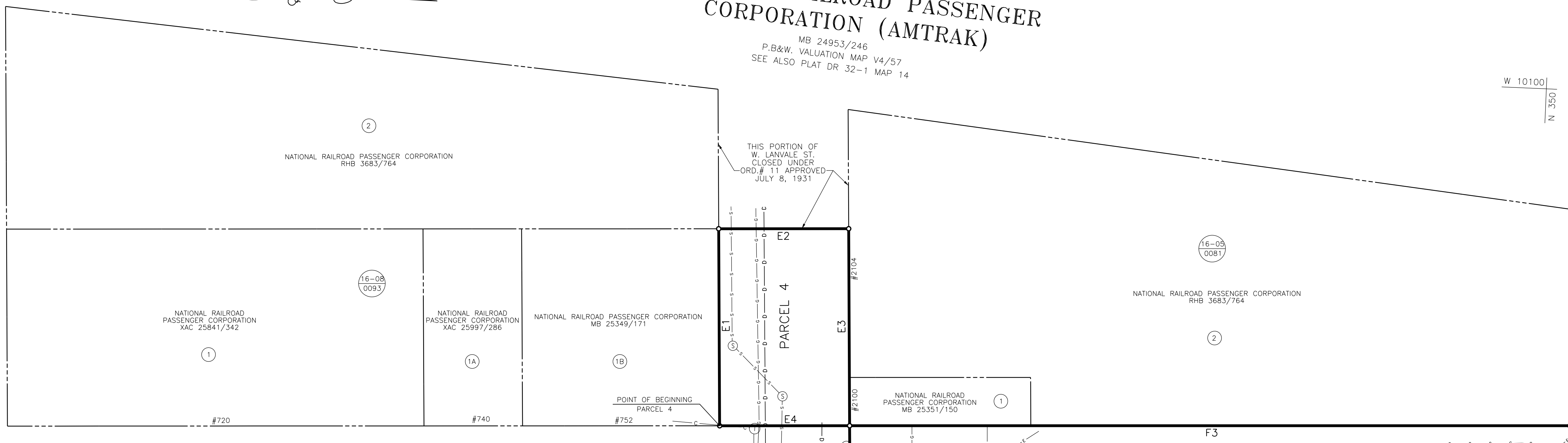
MB 24953/246
P.B&W. VALUATION MAP V4/57
SEE ALSO PLAT DR 32-1 MAP 14

Table with columns: NO., REVISIONS, DATE, BY



HARLEM AVENUE (66' WIDE)

W. LAFAYETTE AVENUE (66' WIDE)



N. PULASKI STREET (66' WIDE)

N. PULASKI STREET (66' WIDE)

N. BRICE STREET (40' WIDE)

W. LANVALE STREET (66' WIDE)

RAYNER AVENUE (50' WIDE)

Table of owners and parcels: #34 DANIEL BUTLER, #35 SEVEN COMPUTERS AND PHONES, #36 JAMES E. CANN, #37 BENNIE J. FOREMAN & MARGARET FOREMAN, #38 GEORGE A. WILLIAMS, #39 TROY L. HOLLIS

Table of owners and parcels: #35 ROX DEVELOPERS INC, #36 RAYNER AVENUE TRUST LLC, #37 LUVEUSHA WILLIAMSON, #38 MARK CARPENTER, #39 DONCHEZ GRAHAM

Table of owners and parcels: #711 MAYOR & CITY COUNCIL, #713 ROGER L. MASON & VERONICA E. MASON, #715 E.H. POOLE, #717 TYONE WINDER, #719 W.N.E. LIMITED PARTNERSHIP

Table of owners and parcels: #70 NATIONAL RAILROAD PASSENGER CORPORATION, #71 NATIONAL RAILROAD PASSENGER CORPORATION, #72 NATIONAL RAILROAD PASSENGER CORPORATION, #73 NATIONAL RAILROAD PASSENGER CORPORATION, #74 JOHN M. DANDRIDGE, #75 JOSHUA R. JONES, SARAH E. JONES

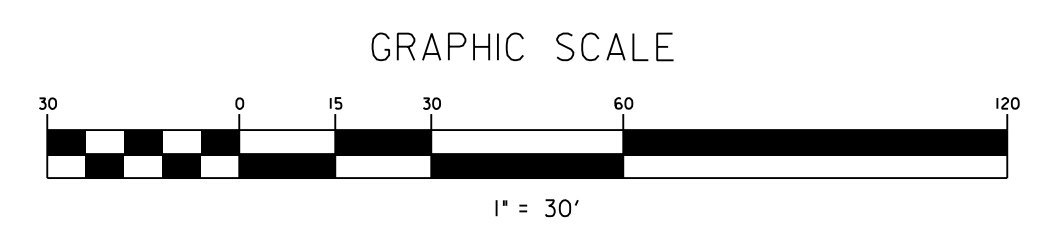
Table of owners and parcels: #19 NATIONAL RAILROAD PASSENGER CORPORATION, #18 NATIONAL RAILROAD PASSENGER CORPORATION, #17 NATIONAL RAILROAD PASSENGER CORPORATION, #16 NATIONAL RAILROAD PASSENGER CORPORATION, #15 NATIONAL RAILROAD PASSENGER CORPORATION, #14 NATIONAL RAILROAD PASSENGER CORPORATION, #13 NATIONAL RAILROAD PASSENGER CORPORATION, #12 NATIONAL RAILROAD PASSENGER CORPORATION, #11 NATIONAL RAILROAD PASSENGER CORPORATION, #10 NATIONAL RAILROAD PASSENGER CORPORATION, #20 NATIONAL RAILROAD PASSENGER CORPORATION, #21 NATIONAL RAILROAD PASSENGER CORPORATION, #22 NATIONAL RAILROAD PASSENGER CORPORATION, #27 NATIONAL RAILROAD PASSENGER CORPORATION, #28 NATIONAL RAILROAD PASSENGER CORPORATION, #29 NATIONAL RAILROAD PASSENGER CORPORATION, #30 NATIONAL RAILROAD PASSENGER CORPORATION

GENERAL NOTES:

- 1. THIS PLAT WAS PREPARED USING AVAILABLE LAND RECORDS AND BALTIMORE CITY BLOCK PLAT INFORMATION.
2. THIS PLAT WAS PREPARED WITH THE BENEFIT OF TITLE SEARCHES PROVIDED BY S.J. MARTENET & CO. & CDB TITLE ABSTRACT CO. INC.
3. AN EASEMENT WILL BE RESERVED FOR ALL UTILITIES NOT TO BE ABANDONED.
4. ANY SUBSURFACE UTILITIES SHOWN HEREON WERE COMPILED FROM BALTIMORE CITY UTILITY RECORD DRAWINGS, AND ARE FOR THE CONVENIENCE OF THE USER OF THE DRAWING, AND THE CITY OFFERS NO WARRANTY OR GUARANTEE AS TO THE ACCURACY, COMPLETENESS, EXISTENCE OR NON-EXISTENCE OF THE INFORMATION SHOWN HEREON. THE USER OF THIS PLAT MUST VERIFY ALL SUCH INFORMATION TO HIS/HER OWN SATISFACTION.
5. RIGHT OF WAY WIDTHS SHOWN HEREON ARE BASED ON INFORMATION PROVIDED BY THE CITY'S MAP AND RECORDS SECTION.
6. THIS PLAT WAS PREPARED BY WHITMAN, REQUARDT & ASSOCIATES, LLP.
7. RECORDS OF FORMER STREET PROCEEDINGS ARE FILED AS FOLLOWS: LANVALE STREET OPENING: SJM 16-1507 PULASKI STREET OPENING: SJM 16-1651

COURSES AND DISTANCES

Table with columns: PARCEL 4, PARCEL 5, PARCEL 6, PARCEL 7, PARCEL 8. Rows: E1, E2, E3, E4, F1, F2, F3, F4, G1, G2, G3, G4, H1, H2, H3, H4, J1, J2, J3, J4. Values: Courses and distances in feet and inches.



CHEIF, SURVEY SECTION
CHEIF, TRANSPORTATION ENGINEERING & CONSTRUCTION DIVISION
DIRECTOR, DEPARTMENT OF TRANSPORTATION

SURVEYED BY: FIELD CHECKED:
COMPUTED BY: DRAWN BY:
CHECKED BY:

GROUP B 316-C-6
CITY OF BALTIMORE
DEPARTMENT OF TRANSPORTATION
TRANSPORTATION ENGINEERING & CONSTRUCTION DIVISION
AN ORDINANCE TO CONDEMN AND CLOSE CERTAIN STREETS AND ALLEYS OR PORTIONS THEREOF LYING WITHIN THE AREA OF THE FREDERICK DOUGLASS TUNNEL PROGRAM, SHEET 1 OF 1 COMPRISING CERTAIN STREETS AND ALLEYS LYING WITHIN THE AREA BOUNDED BY W. LAFAYETTE AVENUE, N. BRICE STREET, W. LANVALE STREET, N. PULASKI STREET, HARLEM AVENUE AND THE LAND OF THE NATIONAL RAILROAD PASSENGER CORPORATION (AMTRAK) BALTIMORE, MD 21217
WARD 16, SECTION 05, BLOCKS 0081 & 0082 AND WARD 16, SECTION 08, BLOCK 0093