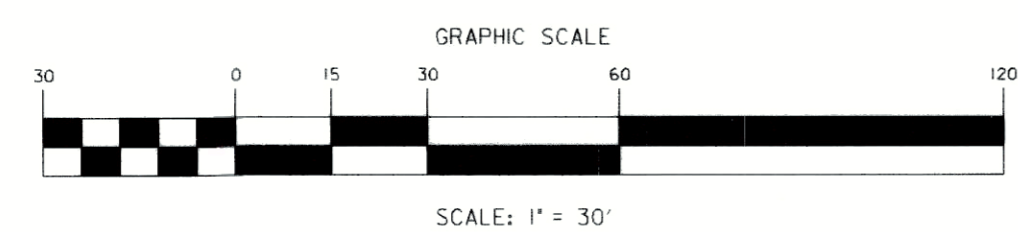
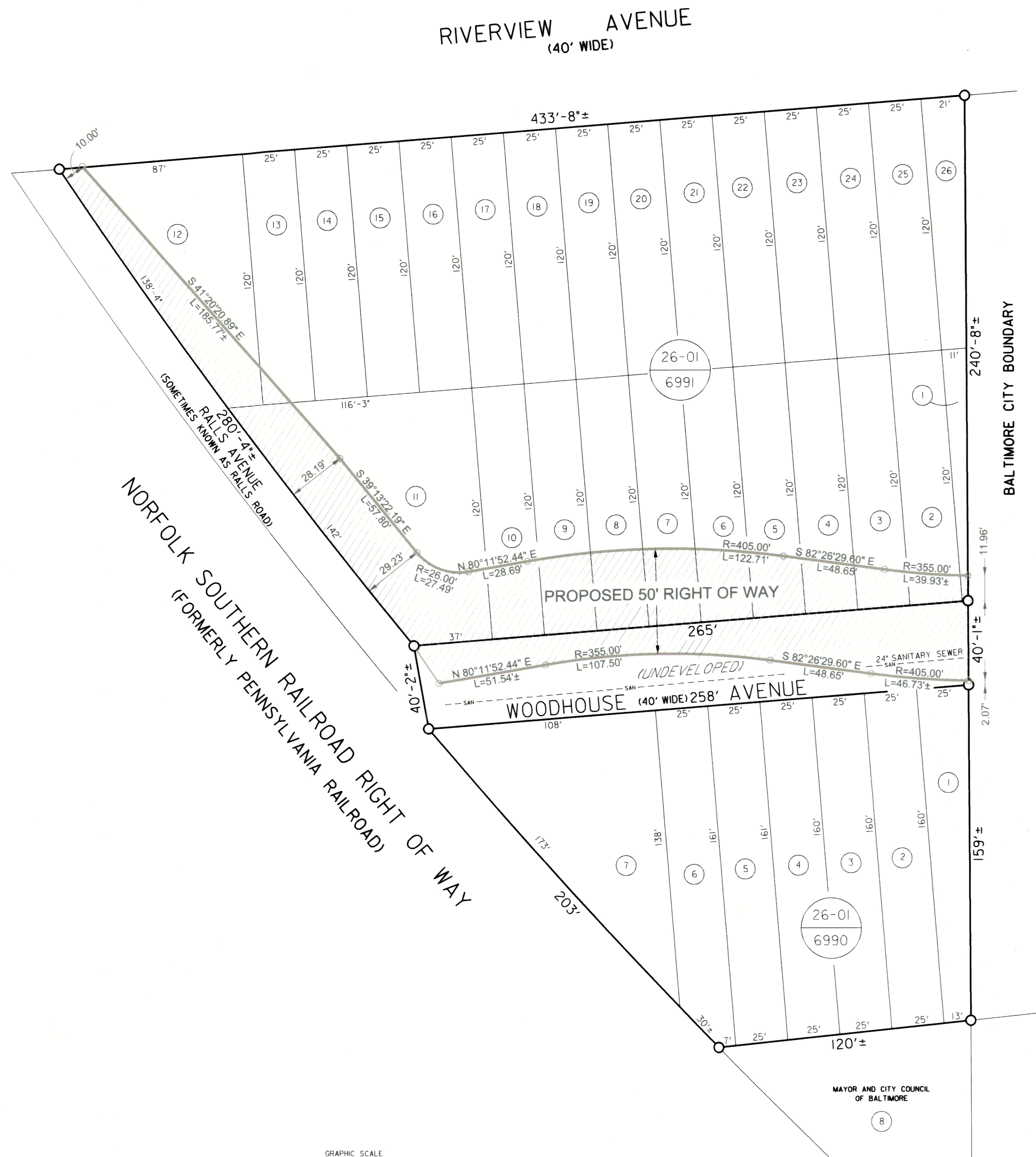


VICINITY MAP  
1"=2000'



- GENERAL NOTES**
- THIS PLAT WAS PREPARED USING AVAILABLE DEEDS AND BALTIMORE CITY BLOCK PLAT INFORMATION.
  - ANY UNDERGROUND UTILITIES SHOWN HEREON WERE COMPILED FROM BALTIMORE CITY UTILITY RECORD DRAWINGS, AND ARE FOR THE CONVENIENCE OF THE USER OF THE DRAWING, AND THE CITY OF BALTIMORE OFFERS NO WARRANTY OR GUARANTEE AS TO THE ACCURACY, CORRECTNESS, COMPLETENESS, EXISTENCE OR NON-EXISTENCE OF THE INFORMATION SHOWN HEREON. THE USER OF THIS PLAT MUST VERIFY ALL SUCH INFORMATION TO HIS/HER OWN SATISFACTION.
  - N/F = NOW OR FORMERLY.
  - LEGEND:  
PROPOSED RIGHT OF WAY:

694-23-080

CITY OF BALTIMORE  
DEPARTMENT OF TRANSPORTATION  
TRANSPORTATION ENGINEERING AND CONSTRUCTION DIVISION

**PLAT SHOWING**

BLOCK 6990, LOTS 1 THROUGH 7, AND BLOCK 6991, LOTS 1 THROUGH 26, AND THE BED OF WOODHOUSE AVENUE TO BE ACQUIRED BY THE MAYOR AND CITY COUNCIL OF BALTIMORE FOR THE LAYING OUT OR EXTENDING OF A PUBLIC ROAD AND THE WIDENING OF RALLS AVENUE

WARD 26, SECTION 01, BLOCK 6990 AND BLOCK 6991  
SURVEY SECTION  
SCALE: 1" = 30' DATE: NOVEMBER 29, 2023 SHEET 1 OF 1

*John Staley* 11/30/23  
CHIEF, SURVEY SECTION

*W. B. Wason* 12/4/23  
CHIEF, TRANSPORTATION ENGINEERING AND CONSTRUCTION DIVISION  
for Simal Devkota

*Carroll Johnson* 12/7/23  
DIRECTOR, DEPARTMENT OF TRANSPORTATION

NO.	REVISIONS	DATE	BY

COMPUTED BY: W. PATTERSON  
DRAWN BY: W. PATTERSON  
CHECKED BY: P. MACKAY & J. STALEY