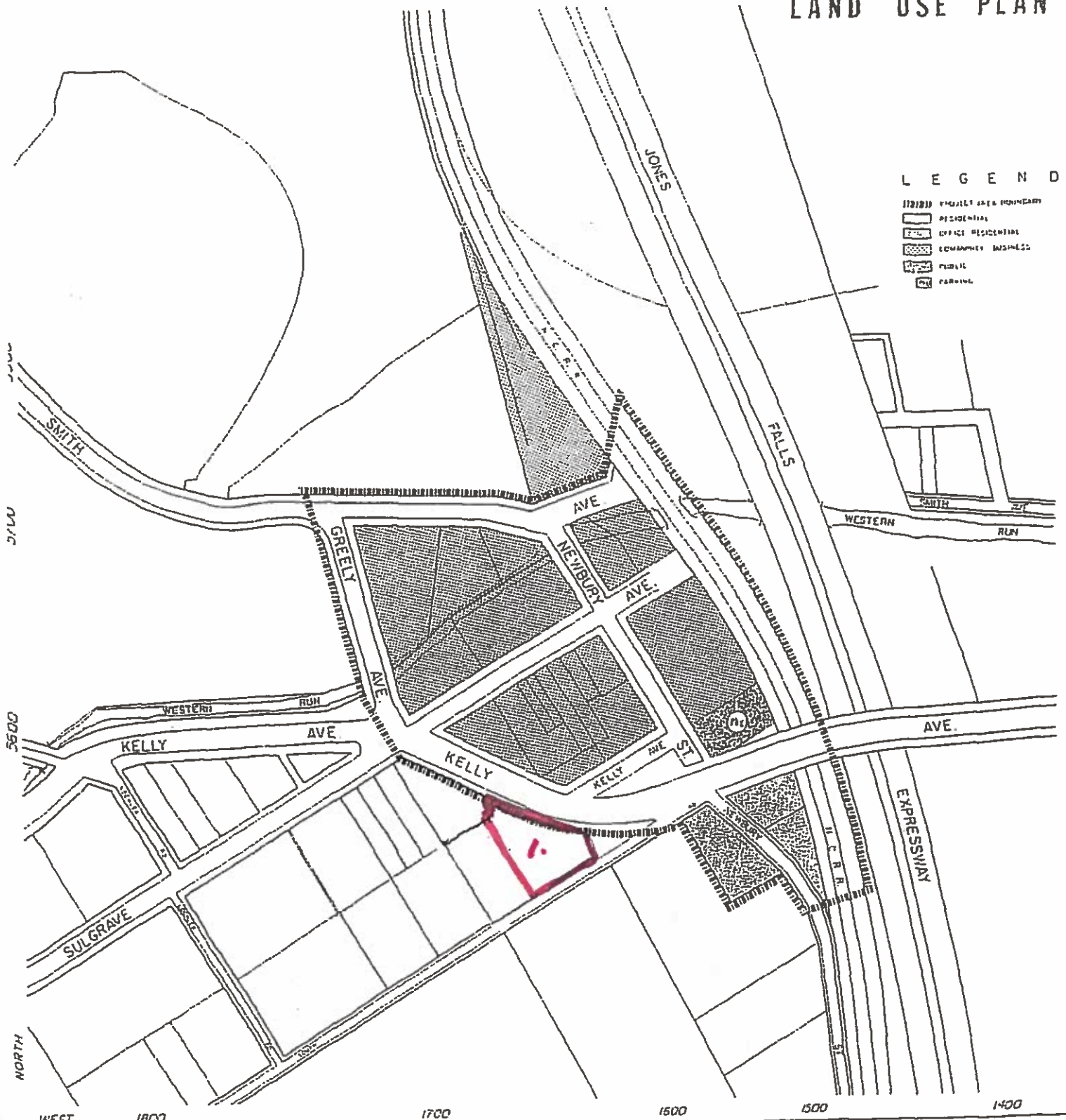


LAND USE PLAN



LEGEND

- PROJECT AREA BOUNDARY
- RESIDENTIAL
- OFFICE RESIDENTIAL
- COMMERCIAL BUSINESS
- PUBLIC
- PARKING

MT. WASHINGTON

PLANNING DIVISION

DEPARTMENT OF HOUSING AND COMMUNITY DEVELOPMENT

BALTIMORE, MARYLAND



LAND USE PLAN

DATE: 02/24/76	REVISION:	1
APPROVED BY: B.S.P.		
APPROVED BY:		


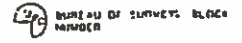
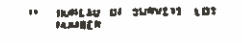
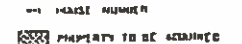
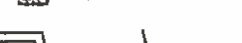
EXHIBIT

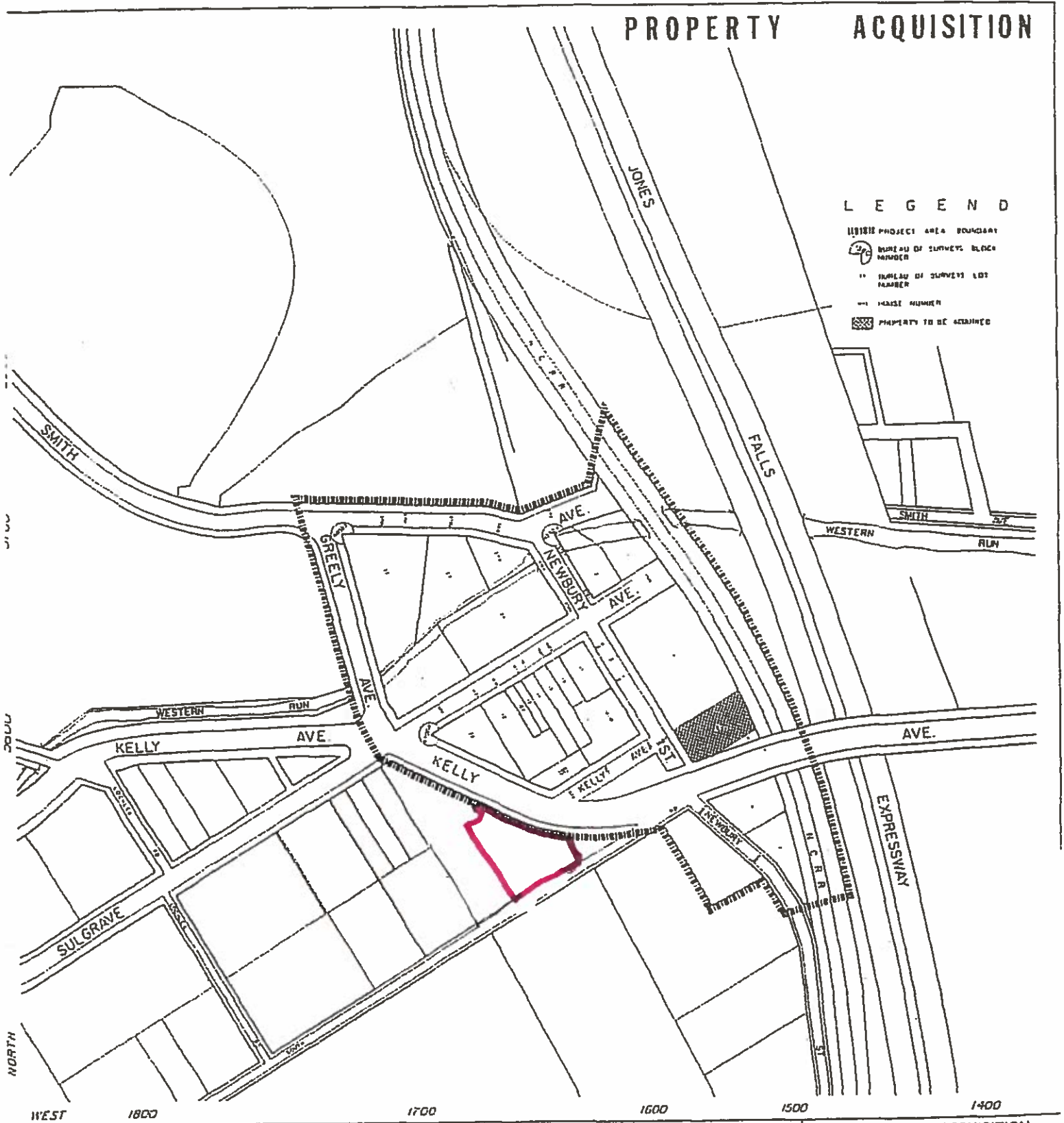
1. CHANGE TO OFFICE-RESIDENTIAL LAND USE

17-0108

PROPERTY ACQUISITION

LEGEND

-  PROJECT AREA BOUNDARY
-  BUREAU OF SURVEYS BLOCK NUMBER
-  MAPLAIN OF SURVEYS LOT NUMBER
-  HOUSE NUMBER
-  PROPERTY TO BE ACQUIRED



MT. WASHINGTON

PLANNING DIVISION

DEPARTMENT OF HOUSING AND COMMUNITY DEVELOPMENT



BALTIMORE, MARYLAND

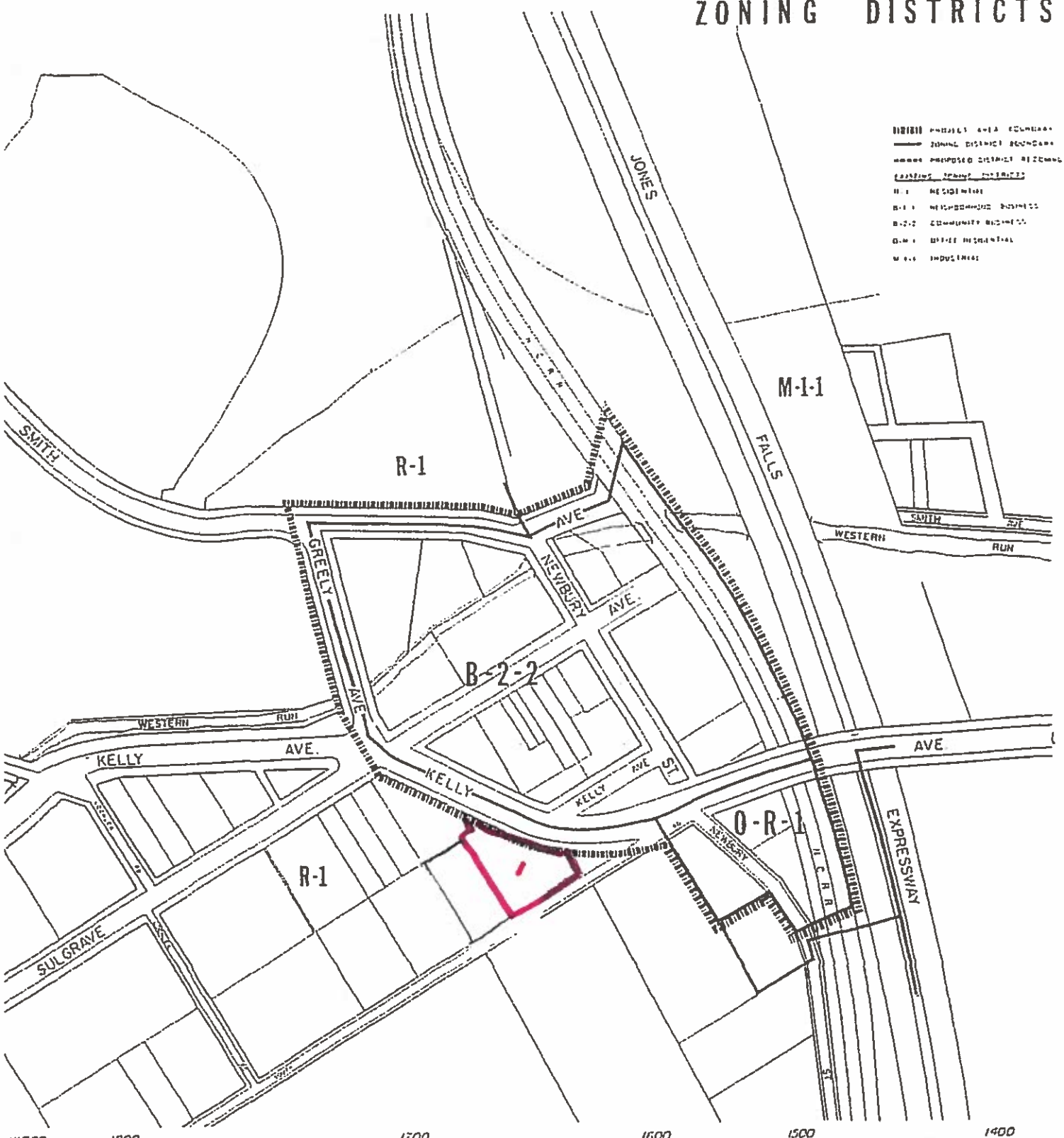
PROPERTY ACQUISITION

DATE	APPROVED	2
DRAWN BY		
APPROVED		
		EXHIBIT



ZONING DISTRICTS

- PROPOSED DISTRICT BOUNDARY
- ZONING DISTRICT BOUNDARY
- PROPOSED DISTRICT BOUNDARY
- PROPOSED STREET ALIGNMENT
- EXISTING STREET ALIGNMENT
- R-1 RESIDENTIAL
- B-1 BUSINESS
- B-2 COMMUNITY BUSINESS
- O-R-1 OFFICE RESIDENTIAL
- M-1 INDUSTRIAL



MT. WASHINGTON

PLANNING DIVISION



DEPARTMENT OF HOUSING AND COMMUNITY DEVELOPMENT



BALTIMORE, MARYLAND

ZONING DISTRICTS

DATE: 11/11/76	BY: [Signature]
APPROVED BY: [Signature]	DATE: 11/11/76
4	
EXHIBIT	

*ZONING CHANGE
1. FROM R-1 TO B-2-2*