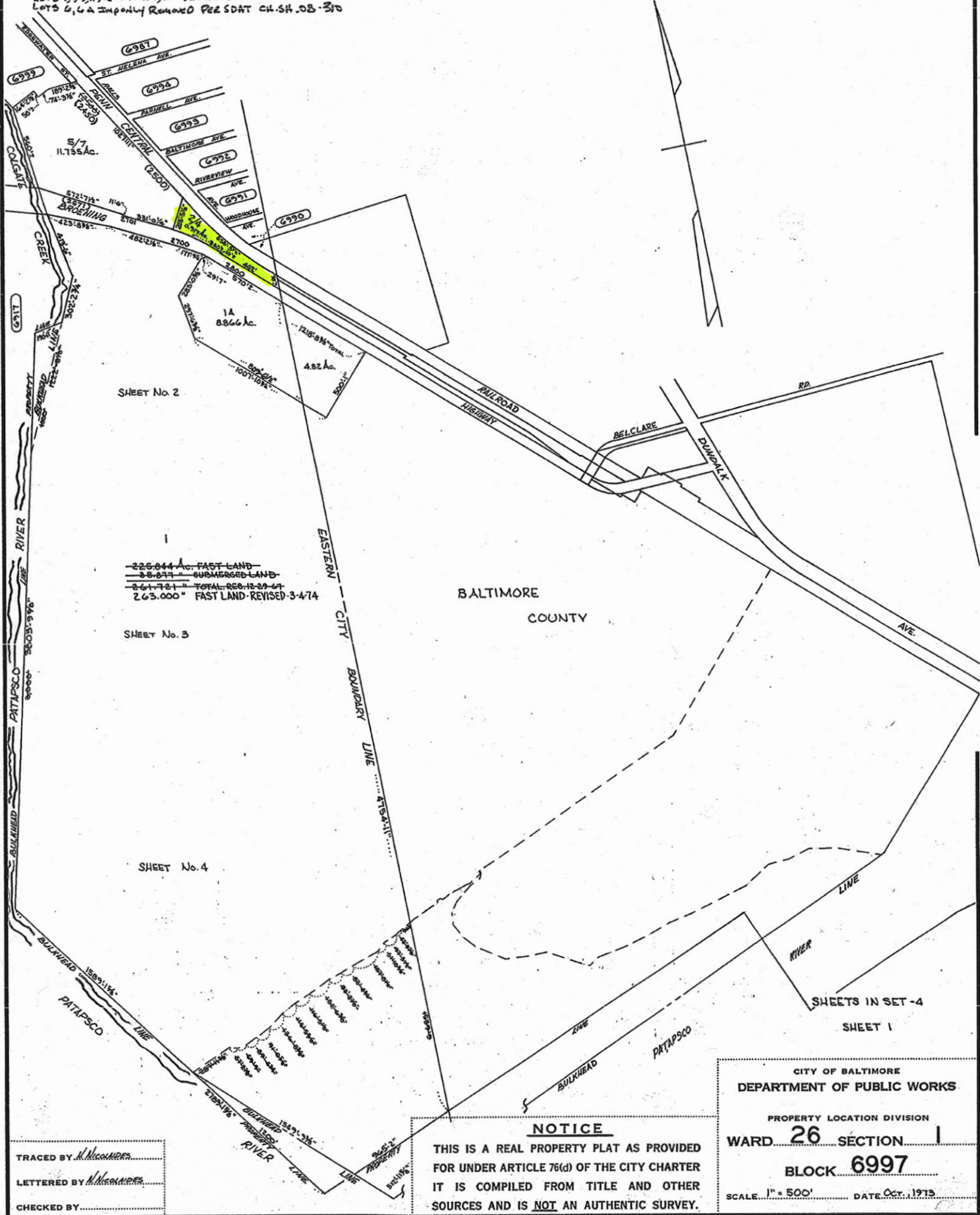


**REVISIONS**

BK. APPROV.  
 LOTS 1, 9, 11, 12 PER PL. 3, APP. C 34, 863  
 LOTS 6, 6A IMPROV. REMOVED PER SDAT CH. SH. 08-370



225,844 Ac.	FAST LAND
88,877	SUBMERGED LAND
261,721	TOTAL RES. 12-29-67
263,000	FAST LAND REVISED 3-4-74

**NOTICE**  
 THIS IS A REAL PROPERTY PLAT AS PROVIDED FOR UNDER ARTICLE 76(d) OF THE CITY CHARTER IT IS COMPILED FROM TITLE AND OTHER SOURCES AND IS NOT AN AUTHENTIC SURVEY.

CITY OF BALTIMORE  
 DEPARTMENT OF PUBLIC WORKS  
 PROPERTY LOCATION DIVISION  
 WARD **26** SECTION **1**  
 BLOCK **6997**  
 SCALE: 1" = 500' DATE: OCT. 1973

TRACED BY: *M. McManis*  
 LETTERED BY: *M. McManis*  
 CHECKED BY: .....

*Brandon M. Scott*



