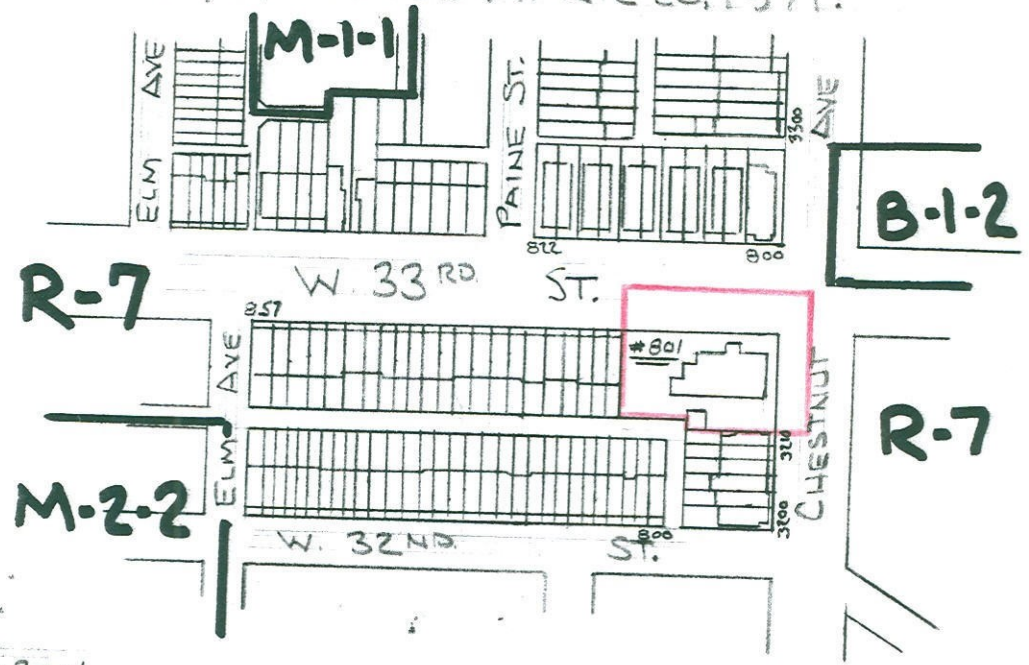
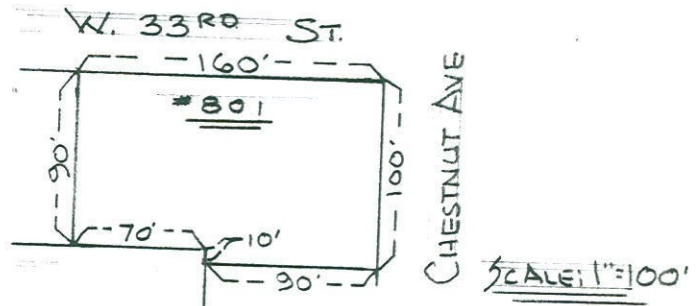


SHEET NO. 25 OF THE ZONING DISTRICT MAP OF ARTICLE 30 OF THE BALTIMORE CITY CODE, 1966 EDITION, AS AMENDED BY ORDINANCE NO. 1051, APPROVED APRIL 20, 1971.



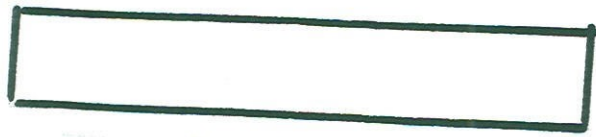
SCALE: 1" = 200'



SCALE: 1" = 100'

AREA OUTLINED IN RED TO BE CHANGED
 FROM: THE R-7 ZONING DISTRICT
 TO: THE O-R-2 ZONING DISTRICT

For:
 AB ASSOCIATES
 % AL BARRY
 ONE SOUTH CALVERT ST. - SUITE 1150
 BALTIMORE, MD. 21202



MAYOR



PRESIDENT CITY COUNCIL