



— BALTIMORE CITY —
DEPARTMENT OF HOUSING &
COMMUNITY DEVELOPMENT

21-0081R CoDeMap & Decision Making

Presented by:

Alice Kennedy, Commissioner
Kimberly Rubens, Chief of Policy & Research

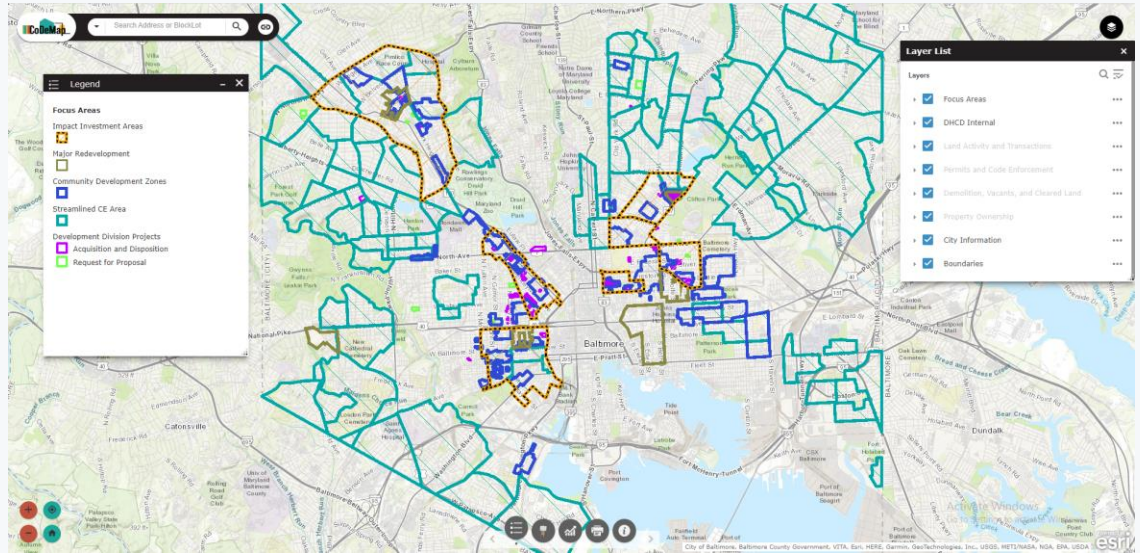
October 11, 2022

AGENDA

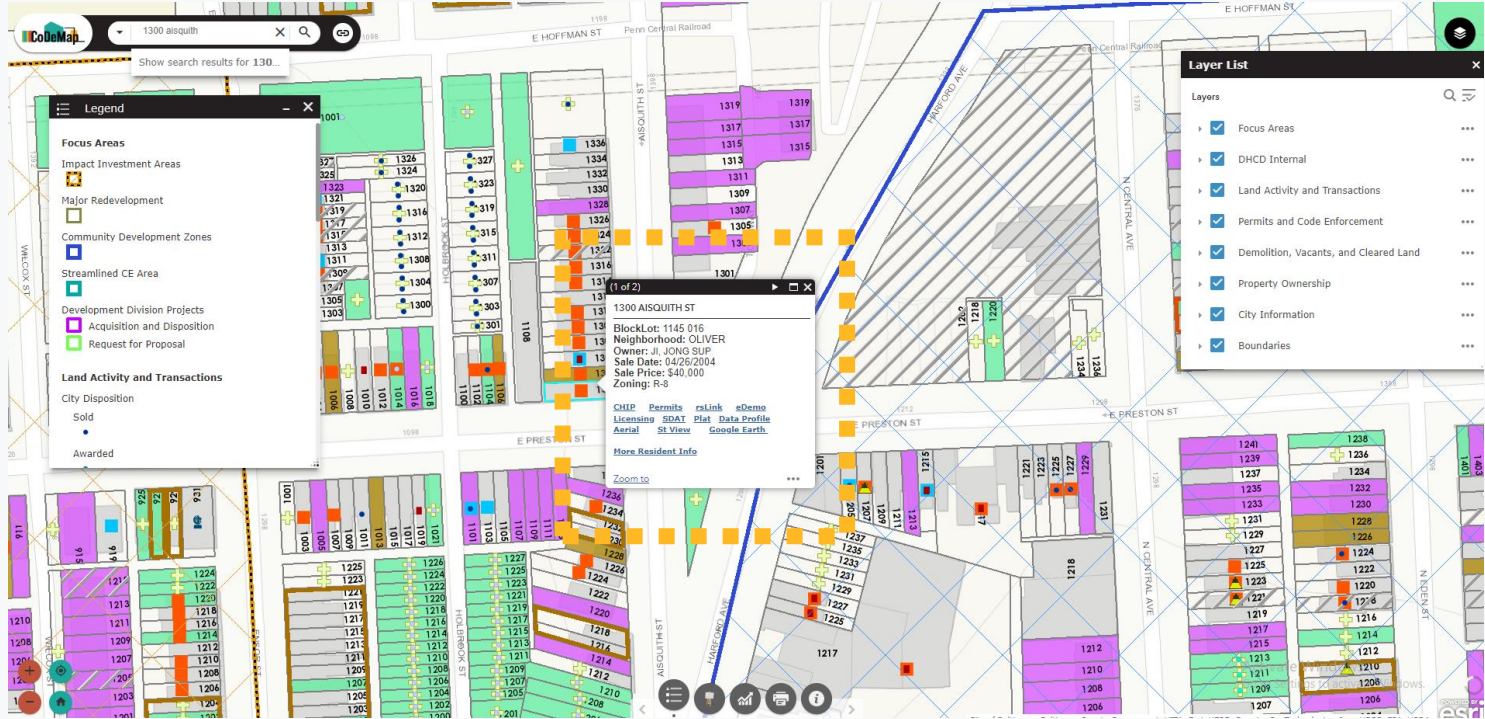
- CoDeMap Overview
- DHCD Data Tools
- Data Driven Decision Making

CODEMAP OVERVIEW

- Origins
- Data Sources
- Updating Schedule



CODMAP OVERVIEW



AGENDA

- CoDeMap Overview
- DHCD Data Tools ←
- Data Driven Decision Making

KEY DHCD TOOLS

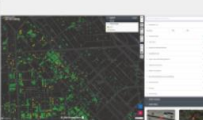


DHCD Research and Analytics Gallery




CoDeMap

This is the newest edition of DHCD's interactive web map. It adds many features to what CoDeMap offered, such as documentation, printing, and exporting of data.




DHCD BuyIntoBmore

The new BuyIntoBmore site aggregates property information from a number of City agencies to provide a comprehensive, user-friendly, mapping tool for constituents to apply to the various programs that allow them to invest in the City.





DHCD Impact Investment Area Project Tracker

DHCD Impact Investment Area project tracking for the Neighborhood Cabinet project. This is connected and updated live from Google Sheets managed by the DHCD representatives for each neighborhood.




Investment Map

This application shows where DHCD is spending money by neighborhood. This is only a portion and represents what is clearly mappable to an address. A new iteration will be released soon that allows additional drilling down into each neighborhood.



Key Stats Dashboard

This dashboard shows trends in vacant building notices, vacant building rehabs, as well as demolitions in Baltimore City. This is updated daily.



Neighborhood Data Profile Links

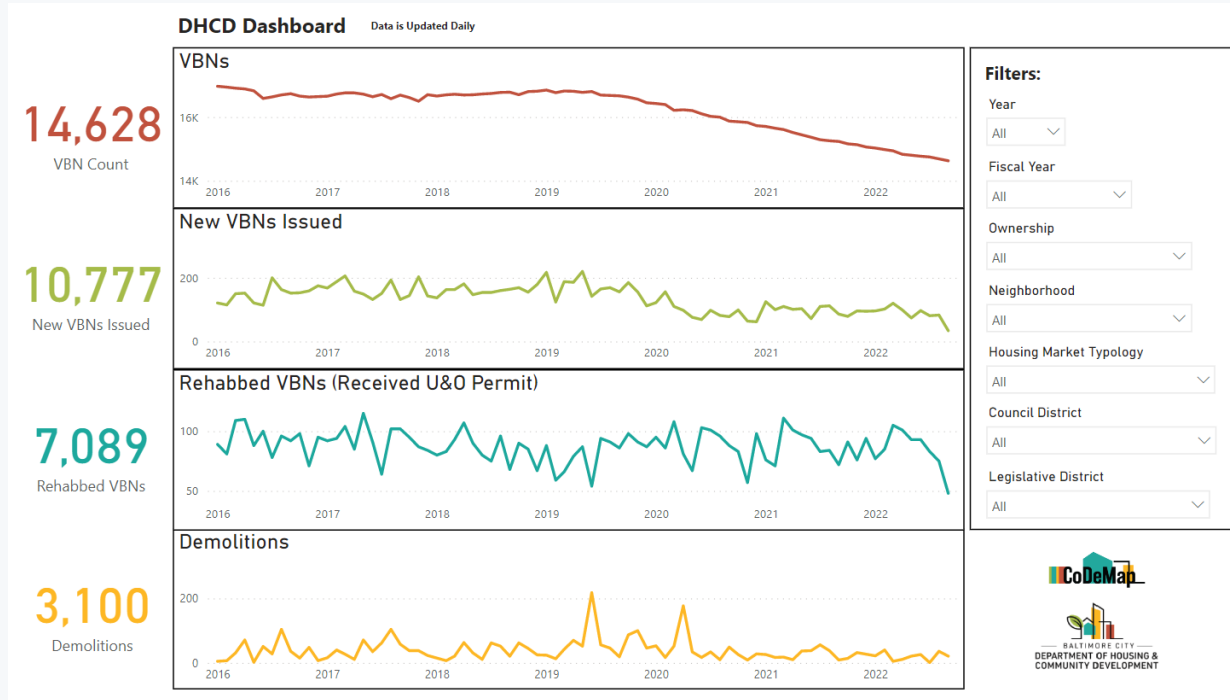
These profiles give rich information about Council Districts and



VBN Change Dashboard by Neighborhood

VBN Change Dashboard by Neighborhood

DATA TOOLS – KEY STATS DASHBOARD



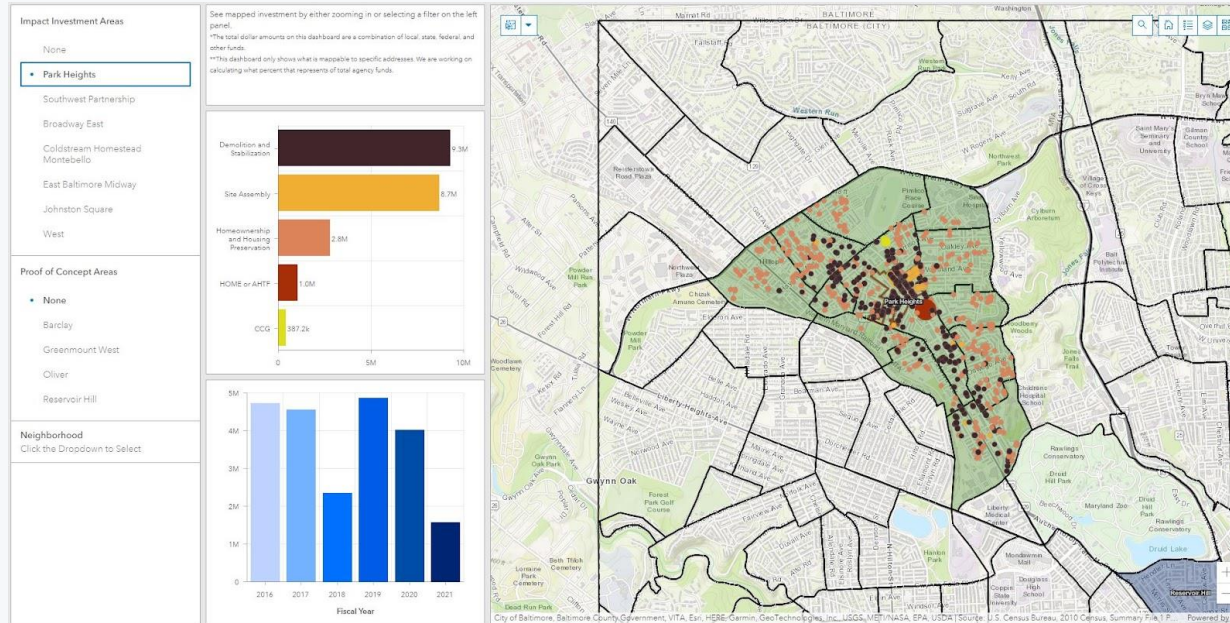
About

- Updated 3x a day: 11:30AM, 1:30PM, and 4pm
- Tracks key outcomes critical to Agency's Mission
- Robust filter options to drill down into geographic-specific trends over time

Uses

- Reviewed during weekly senior leadership meetings
- Tracks outcomes of Code Enforcement and Demolition planning

INVESTMENT MAP



About

- Updated annually in the Fall
- Allows agency to ensure that spending is distributed equitably throughout the City.
- Robust filter options.

Uses

- Annual Capital Budget Planning (Fall-Early Winter)
- Reference point to respond to spending inquiries from Elected Officials, Community Leaders, for Bill Reports, etc.

DHCD PROJECT TRACKER


DHCD Impact Investment Area Project Tracker

West Baltimore Park Heights Johnston Square **East Baltimore Midway** Broadway East Southwest Partnership Coldstream Homestead Montebello

East Baltimore Midway

21st St. Site Assembly & Disposition

Acquisition, Disposition, Rehab
CodeMap Link



Action Steps	Responsible Organization	Status	Status Notes (optional)	Timeline	Needed Resources	% Funded	Zone
Acquire 7 properties using DHCD Capital budget	DHCD	Not Started		6 - 36 months	Will depend on City Acquisition method	0	1
Will use either the Open Bid, an invitation to bid, or RFP to identify the developer. Ideally will identify one to two developers to acquire and rehab all 7 properties.	DHCD	Not Started		3 months	NA	NA	
Purchase and rehab homes for sale/rental	Developer that is selected for the project	Not Started		21 - 24 months	Do not plan to offer subsidies	NA	

Boone St. Farm Redevelopment

Cecil Play Yard Upgrade

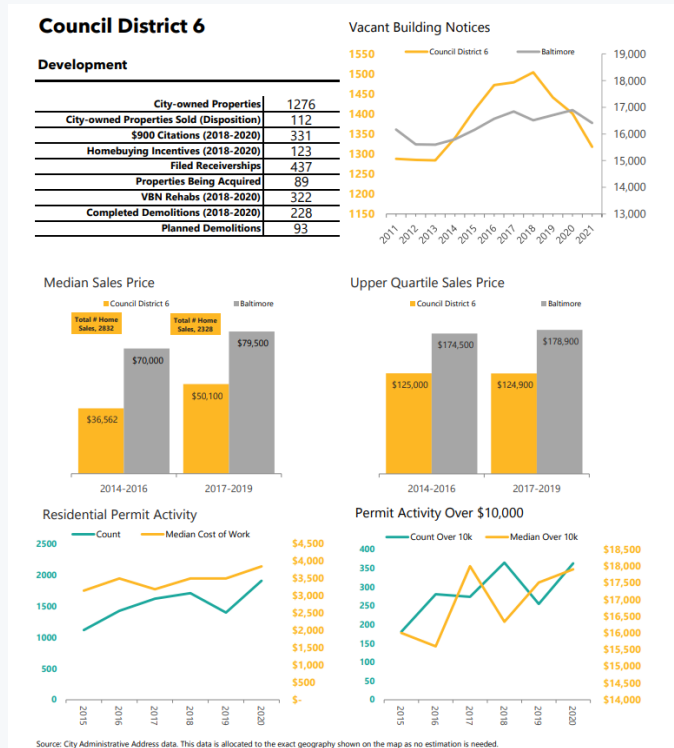
About

- Implementation tool for IIA strategy documents
- Contains detailed tracking information for all DHCD supported development projects in an IIA
- Updated by NDOs pre and post work group meetings

Uses

- Serves as both data-driven action plan and performance management tool for DHCD development projects in Impact Investment Areas.

NEIGHBORHOOD DATA PROFILES



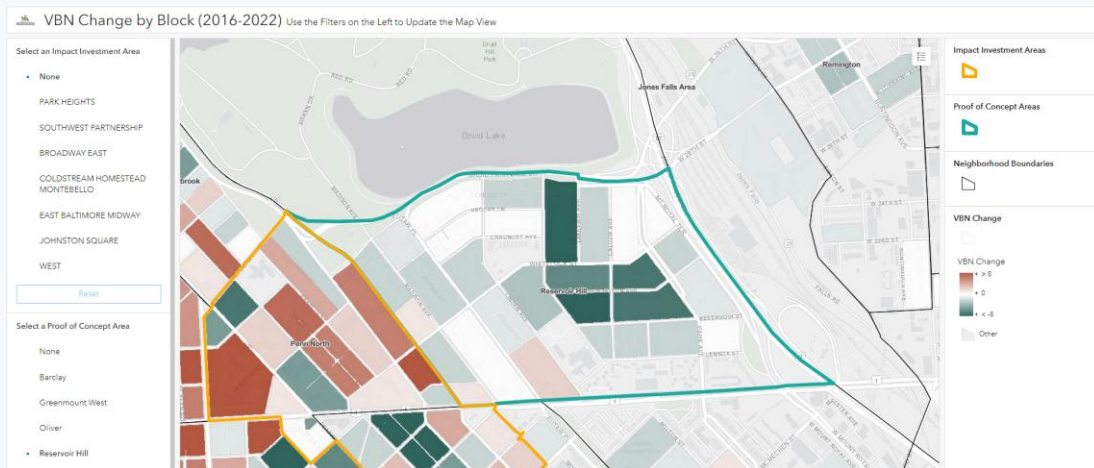
About

- Updated Annually
- Neighborhood specific demographic and DHCD activity profiles

Uses

- Used to inform DHCD interventions
- Community Education Tool
- Track neighborhood outcomes over time

VBN CHANGE DASHBOARD



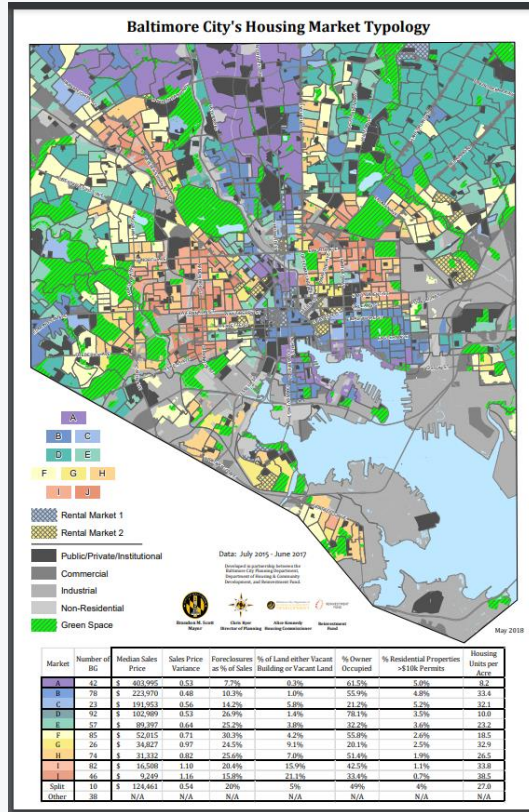
About

- Newest DHCD data tool
- Origins – partnership with State HCD

Uses

- Visual tool to track vacancy trends over time in a neighborhood
- Track progress on DHCD development outcomes

HOUSING MARKET TYPOLOGY



About

- Housing market classification scheme based on quantitative data and statistical process known as “cluster analysis”
- Eight variables inform the typology
- Currently automating so DHCD will have an upgraded version of this tool

Uses

- Strategically match agency resources based on neighborhood market conditions

AGENDA

● CoDeMap Overview

● DHCD Data Tools

● Data Driven Decision Making



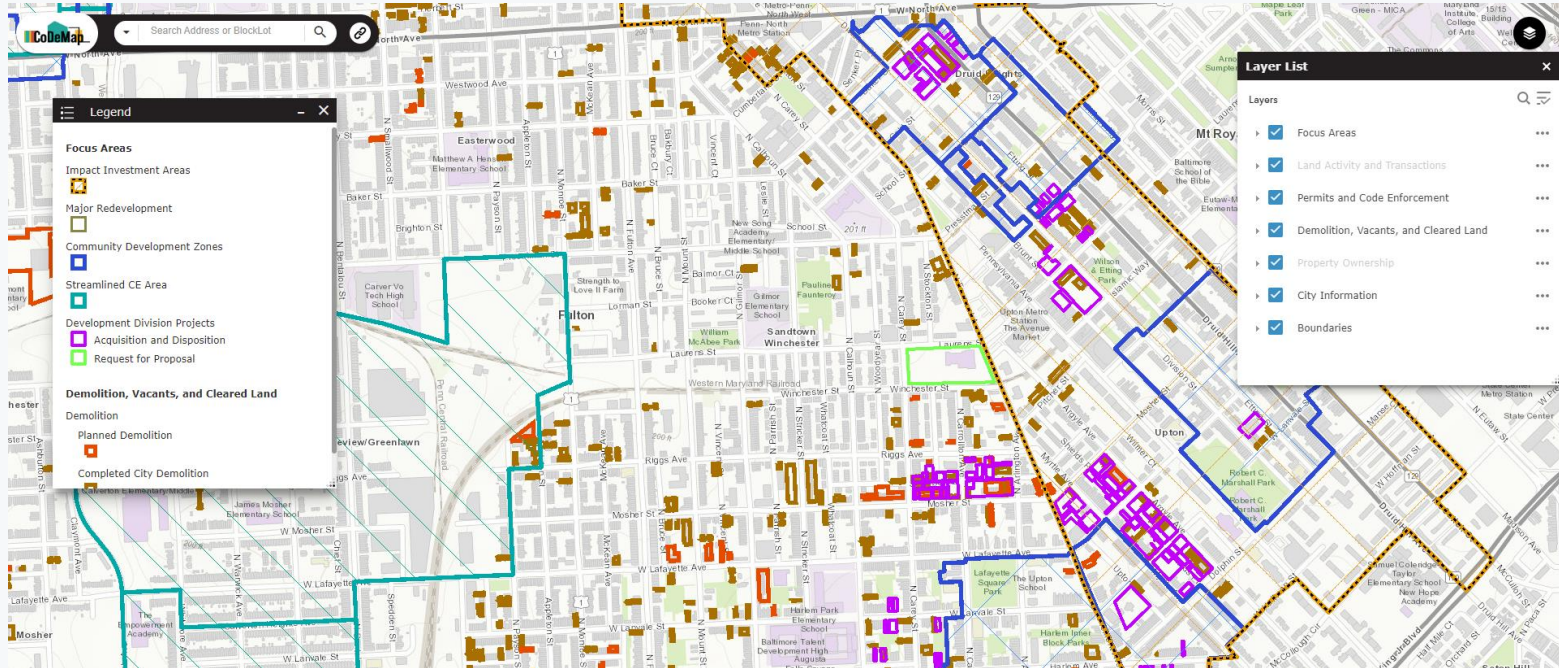
DECISION MAKING

Users	Uses
DHCD Senior Team	<ol style="list-style-type: none"> 1. Block Level Planning for Impact Investment Areas (NSCs, quarterly meetings) 2. Block Level planning for other key asset building areas in partnership with State HCD (iterative process)
DHCD Permits & Litigation Division	<ol style="list-style-type: none"> 1. Strategic Demolition Planning (bi-weekly planning meeting) 2. Targeted Receivership Planning (biannual planning)
DHCD Development Division	<ol style="list-style-type: none"> 1. Neighborhood Development Officers assist individuals interested in purchasing city-owned property (daily) 2. IIA Working groups (depends on meeting schedule of IIA working group) 3. Tax Sale Foreclosure of vacant property planning (annual caseload planning)
DHCD Staff	<ol style="list-style-type: none"> 1. Property Information and History Search (daily)
City Agencies	<ol style="list-style-type: none"> 1. Property Information and History Search (daily) 2. DHCD hosts program specific layers like Greenway Trails Network, Neighborhood Boundaries, Elected Official Boundaries (depends on meeting schedule) 3. CPTED Planning in partnership with MONSE & BPD
General Public	<ol style="list-style-type: none"> 1. Property History Search (daily) 2. Access to property & neighborhood information as well as Key DHCD Tools
Mayor's Office	<ol style="list-style-type: none"> 1. Neighborhood Safety Walks (per Mayor's schedule) 2. CleanStat (biweekly)

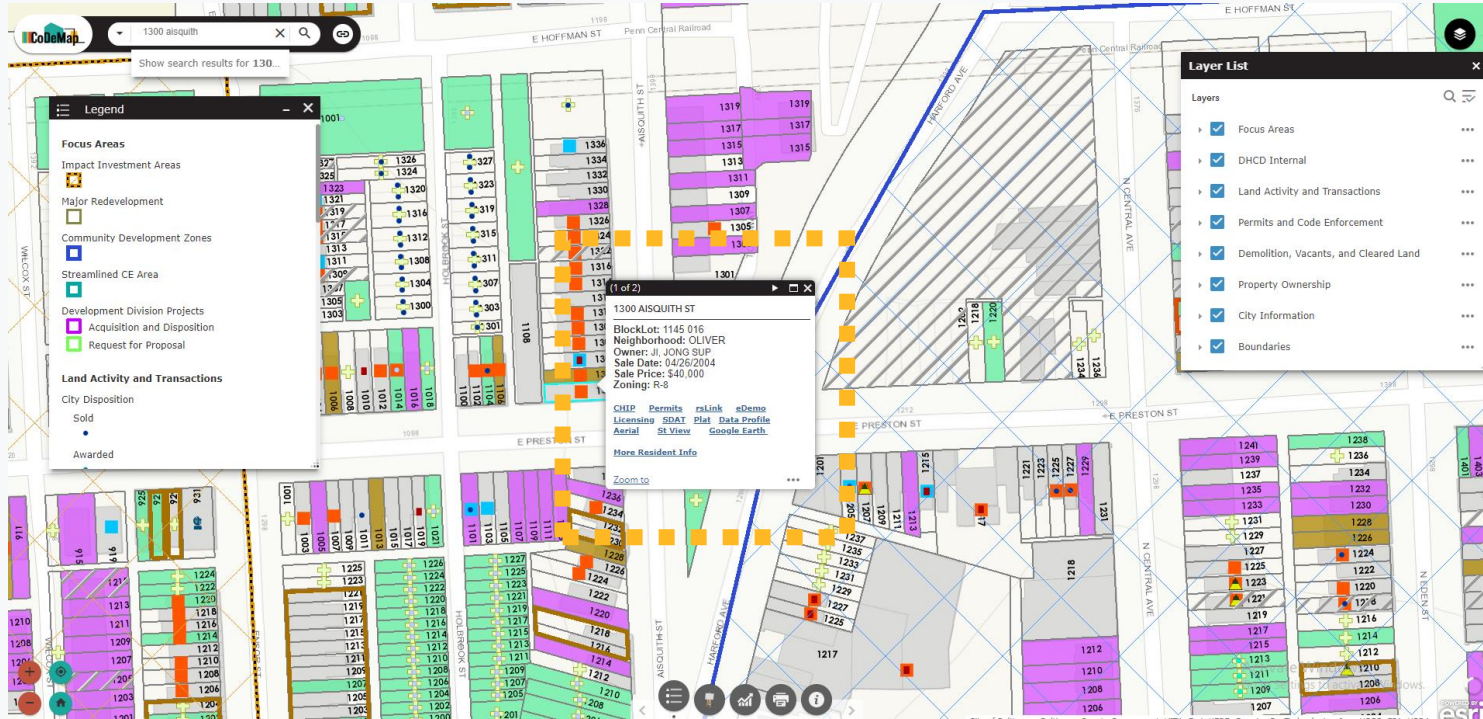
DECISION MAKING – BLOCK LEVEL PLANNING



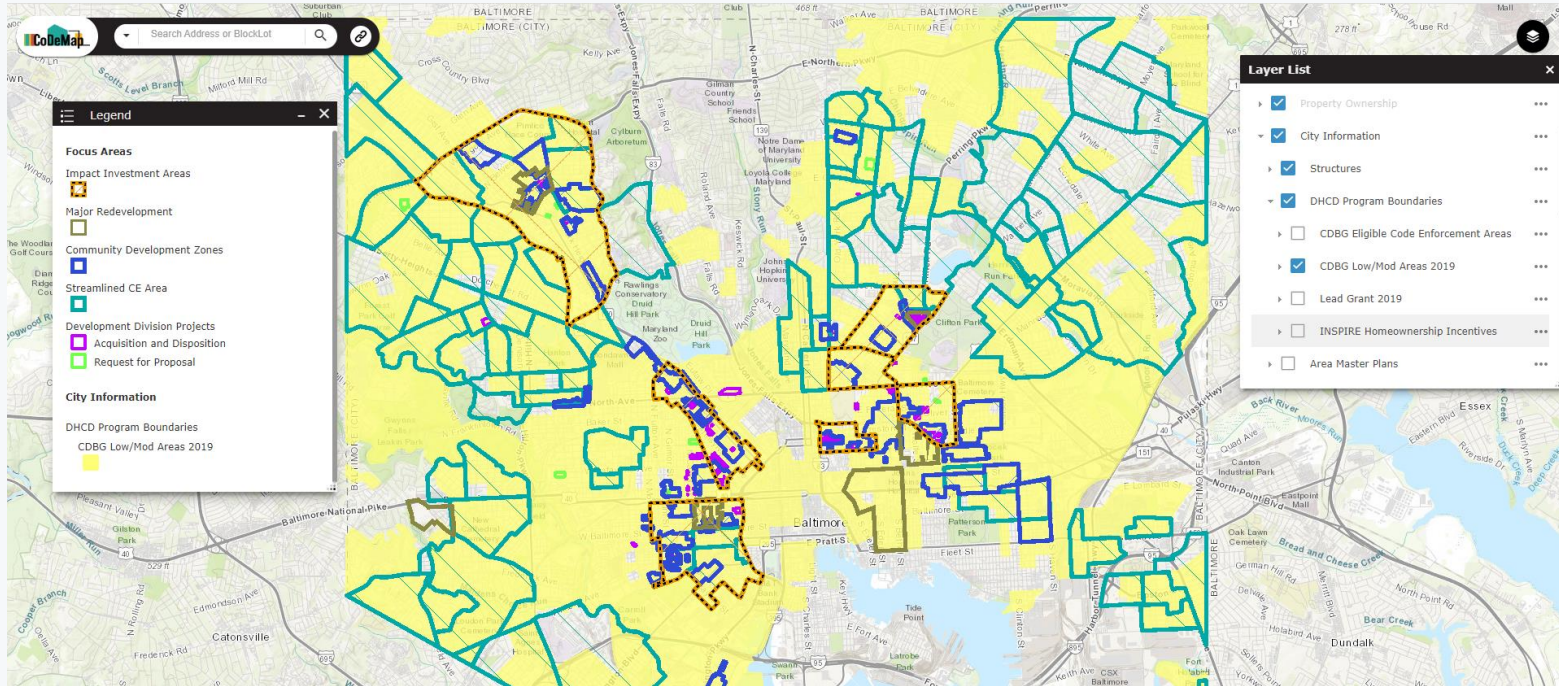
DECISION MAKING - DEMOLITION PLANNING



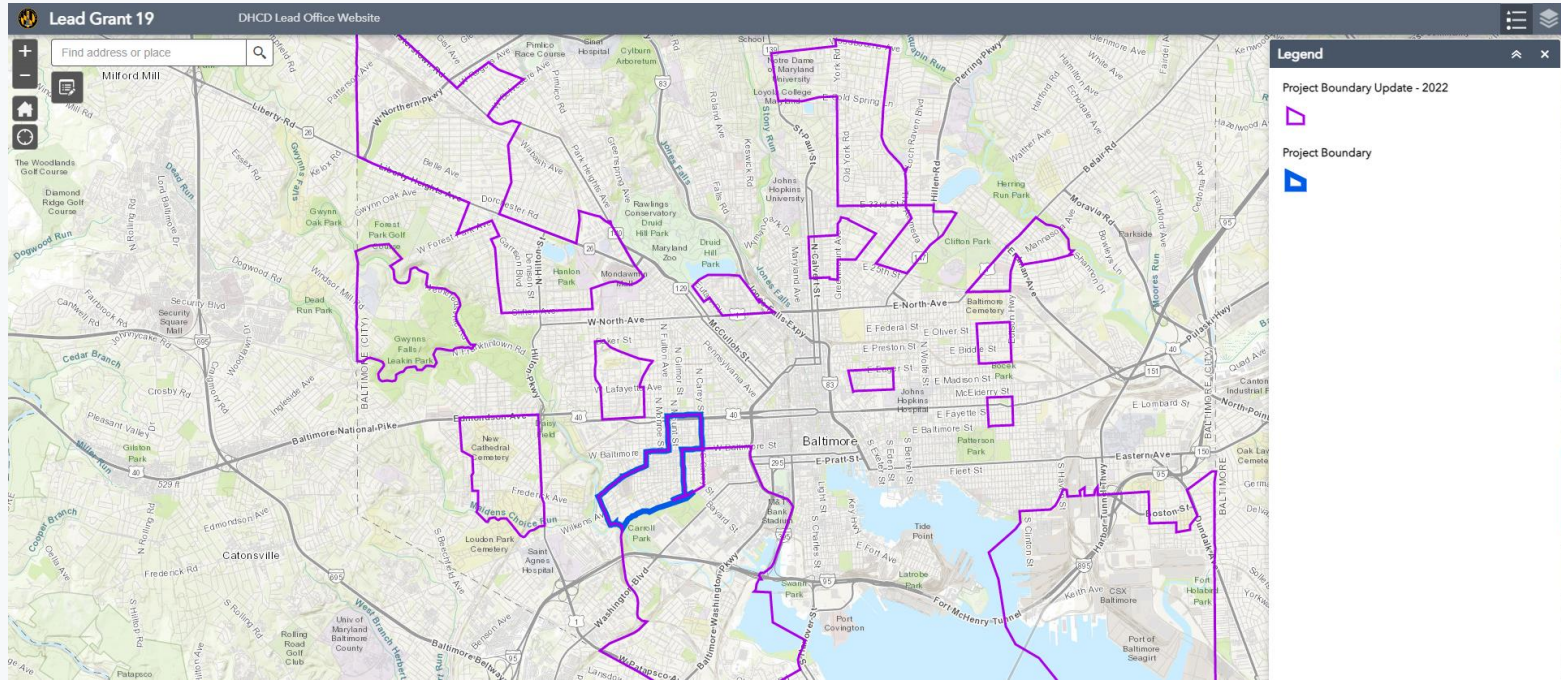
DECISION MAKING - PROPERTY RESEARCH



DECISION MAKING – CDBG INVESTMENTS



DECISION MAKING - LEAD GRANT



QUESTIONS

