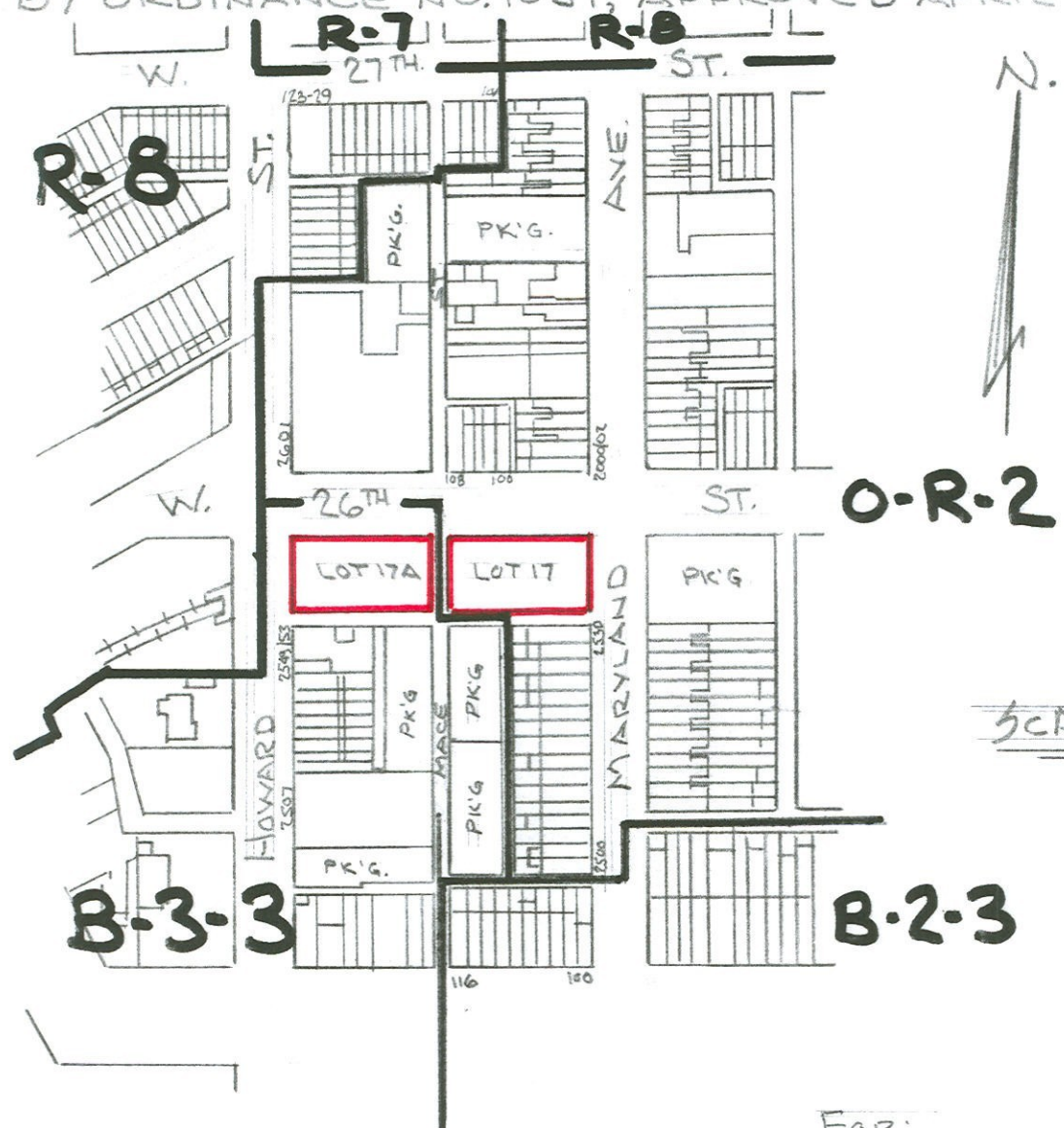


SHEET NO. 35 OF THE ZONING DISTRICT MAPS OF ARTICLE 30 OF THE BALTIMORE CITY CODE, 1966 EDITION, AS AMENDED BY ORDINANCE NO. 1051, APPROVED APRIL 20, 1971.

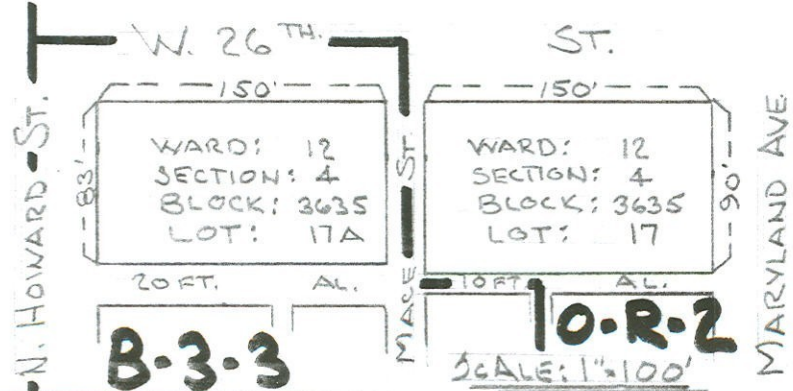


SCALE: 1" = 200'

CONDITIONAL USE:

AREAS OUTLINED IN RED TO BE USED FOR OPEN OFF-STREET PARKING.

FOR:
 AB ASSOCIATES
 % AL BARRY
 ONE S. CALVERT ST. SUITE 1150
 BALTIMORE, MD. 21202



Two empty rectangular boxes for signatures, with the word "MAYOR" written in the middle.

PRESIDENT CITY COUNCIL