

1" = 100'

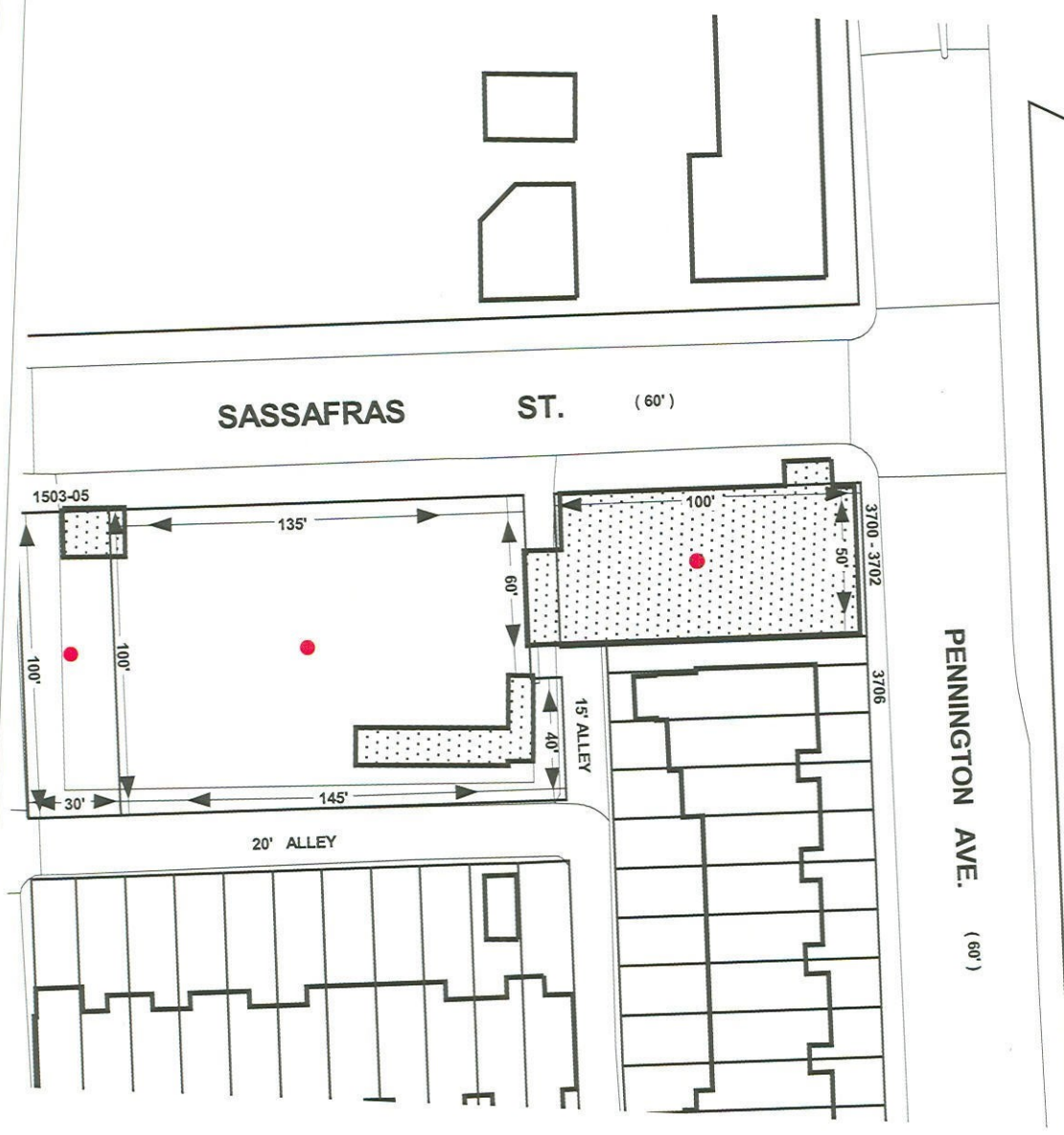
Note:
In Connection With Properties Known As No. 3700 - 3702 PENNINGTON AVENUE,
SS SASSAFRAS STREET AND 1503 - 1505 SASSAFRAS STREET.
The Applicant Wishes To Request The Zoning Change Of The Aforementioned
Properties From The M-2-1 and R-7 Zoning District To a M-2-1 Zoning District only,
As Outlined In Red Above.

WARD - 25 SECTION - 8 BLOCK - 7267 LOTS - 12, 14 & 16

MAYOR

PRESIDENT CITY COUNCIL

10-635



1" = 60'

**3700 - 3702 PENNINGTON AVENUE
SS OF SASSAFRAS STREET
1503 - 1505 SASSAFRAS STREET**

Sheet #2