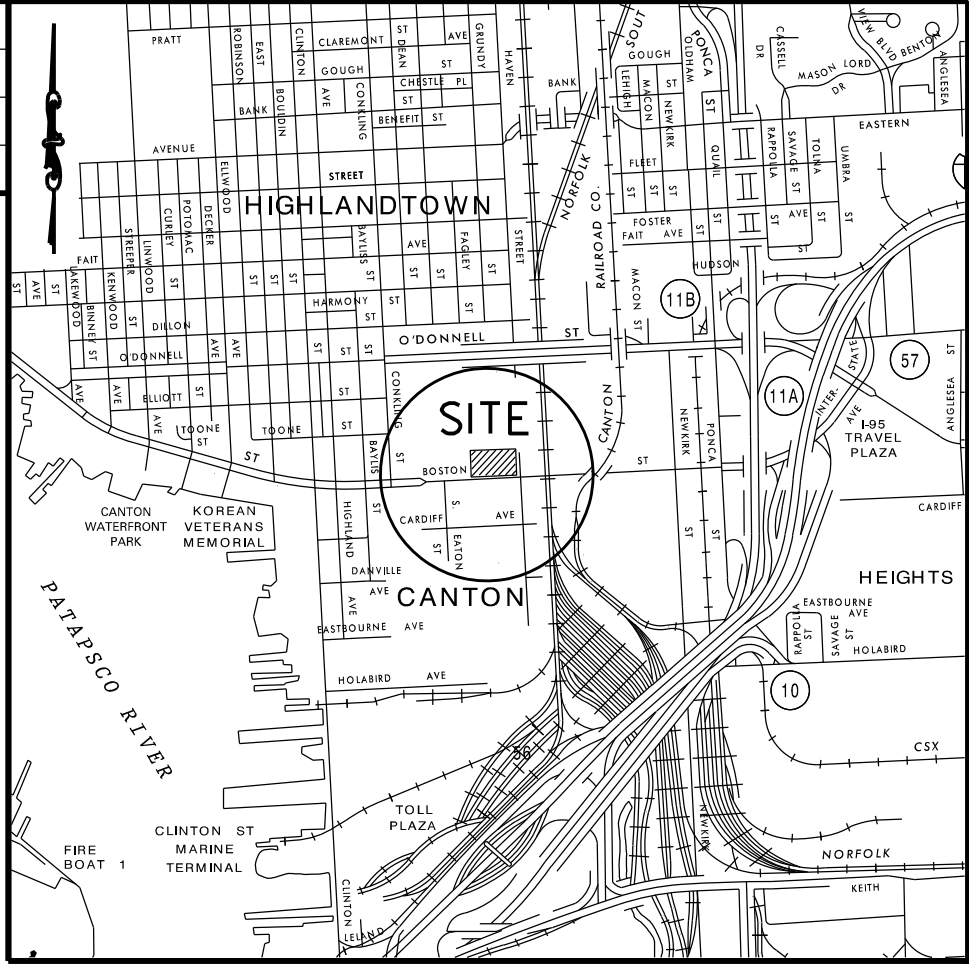


NO.	REVISIONS	DATE	BY



VICINITY MAP
1"=2000'

COURSES AND DISTANCES

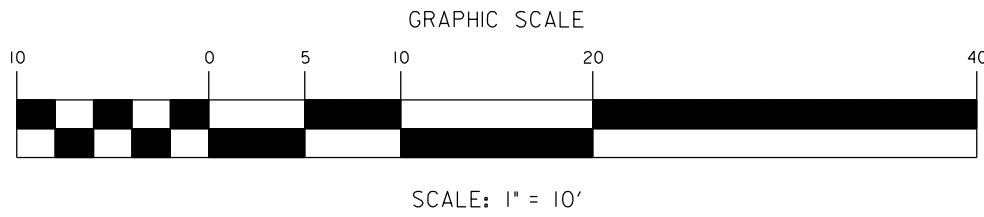
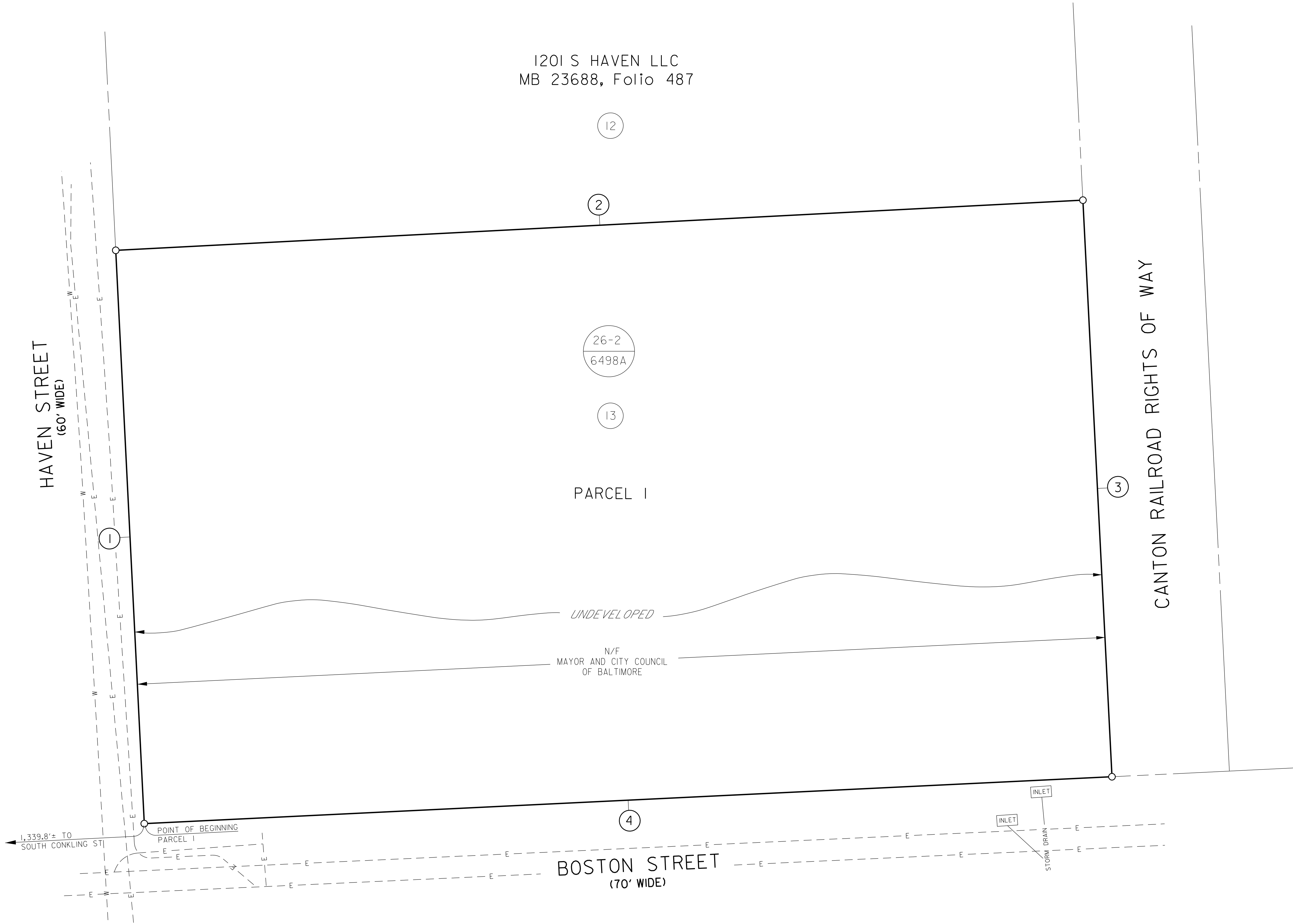
- PARCEL 1 ○
1. NORTHWESTERLY 107.4'
 2. NORTHEASTERLY 181.3'
 3. SOUTHEASTERLY 108.1'
 4. SOUTHWESTERLY 181.3'
- AREA: 19,535 SQUARE FEET
0.448 ACRES±

GENERAL NOTES

1. THIS PLAT WAS PREPARED USING AVAILABLE DEEDS AND BALTIMORE CITY BLOCK PLAT INFORMATION.
2. THIS PLAT WAS PREPARED WITH THE BENEFIT OF TITLE SEARCH PROVIDED BY RESIDENTIAL TITLE & ESCROW COMPANY, DATED JUNE 15, 2021.
3. AN EASEMENT WILL BE RETAINED FOR ALL UTILITIES NOT TO BE ABANDONED.
4. ANY UNDERGROUND UTILITIES SHOWN HEREON WERE COMPILED FROM BALTIMORE CITY UTILITY RECORD DRAWINGS, AND ARE FOR THE CONVENIENCE OF THE USER OF THE DRAWING, AND THE CITY OF BALTIMORE OFFERS NO WARRANTY OR GUARANTEE AS TO THE ACCURACY, CORRECTNESS, COMPLETENESS, EXISTENCE OR NON-EXISTENCE OF THE INFORMATION SHOWN HEREON. THE USER OF THIS PLAT MUST VERIFY ALL SUCH INFORMATION TO HIS/HER OWN SATISFACTION.
5. N/F = NOW OR FORMERLY.

LEGEND

- E — U/G ELECTRIC
— W — U/G WATER
— STORM DRAIN — U/G STORM DRAIN



CHIEF, SURVEY SECTION

CHIEF, TRANSPORTATION ENGINEERING AND CONSTRUCTION DIVISION

DIRECTOR, DEPARTMENT OF TRANSPORTATION

COMPUTED BY: W. PATTERSON
DRAWN BY: W. PATTERSON
CHECKED BY: P. MACKEY & J. STALEY

SCALE: 1" = 10'

CITY OF BALTIMORE
DEPARTMENT OF TRANSPORTATION
TRANSPORTATION ENGINEERING AND CONSTRUCTION DIVISION

PRELIMINARY PLAT FOR THE CONDEMNATION AND CLOSING
OF A PORTION OF BOSTON STREET
BOUNDED BY THE EAST SIDE OF HAVEN STREET,
THE SOUTHERNMOST PROPERTY LINE OF 1201 SOUTH
HAVEN LLC, THE WEST SIDE OF CANTON RAILROAD RIGHT
OF WAY AND THE NORTH SIDE OF BOSTON STREET

WARD 26, SECTION 2, BLOCK 6498-A

SURVEY SECTION

SCALE: 1" = 10' DATE: MARCH 17, 2022 SHEET 1 OF 1