

1" = 100'

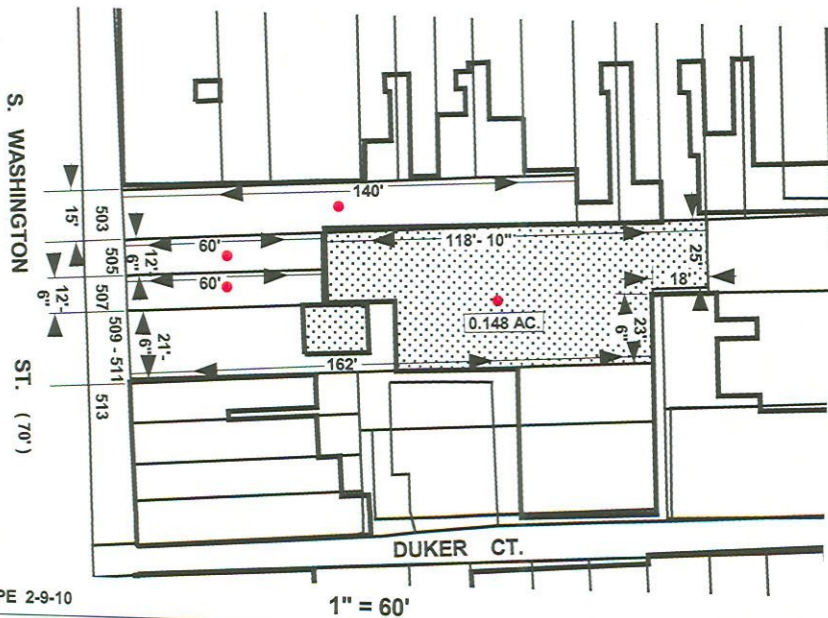
Note:

In Connection With Properties Known As Nos. 503-511 SOUTH WASHINGTON STREET. The Applicant Wishes To Request The Conditional Use Of The Aforementioned Properties As A PARKING LOT, As Outlined In Red Above.

WARD - 2 SECTION - 7 BLOCK - 1783
LOTS - 40, 41, 42 & 43

MAYOR

PRESIDENT CITY COUNCIL



1" = 60'