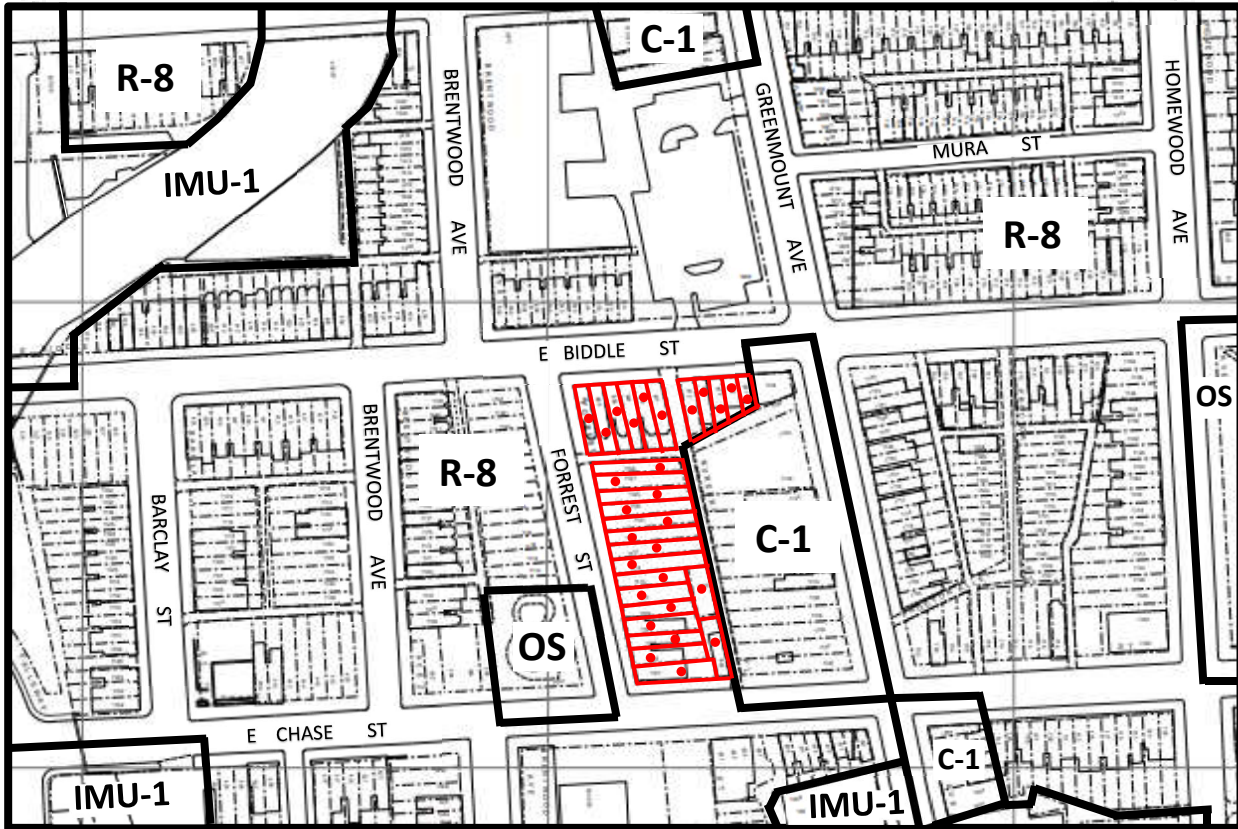


**SHEET NO. 46 OF THE ZONING MAP OF  
THE ZONING CODE OF BALTIMORE CITY**



In Connection With The Properties Known As Nos.

Scale: 1" = 200'

- |                 |                 |                 |
|-----------------|-----------------|-----------------|
| 601 E Biddle St | 621 E Biddle St | 1119 Forrest St |
| 603 E Biddle St | 1101 Forrest St | 1121 Forrest St |
| 605 E Biddle St | 1103 Forrest St | 1123 Forrest St |
| 607 E Biddle St | 1105 Forrest St | 1125 Forrest St |
| 609 E Biddle St | 1107 Forrest St | 1127 Forrest St |
| 611 E Biddle St | 1109 Forrest St | 1129 Forrest St |
| 613 E Biddle St | 1111 Forrest St | 602 E Chase St  |
| 615 E Biddle St | 1113 Forrest St | 1110 Nursery Pl |
| 617 E Biddle St | 1115 Forrest St |                 |
| 619 E Biddle St | 1117 Forrest St |                 |

The Applicant Wishes To Request The Rezoning Of The Aforementioned Properties  
From R-8 Zoning District to C-1 Zoning District, As Outlined In Red Above.

WARD 10      SECTION 5

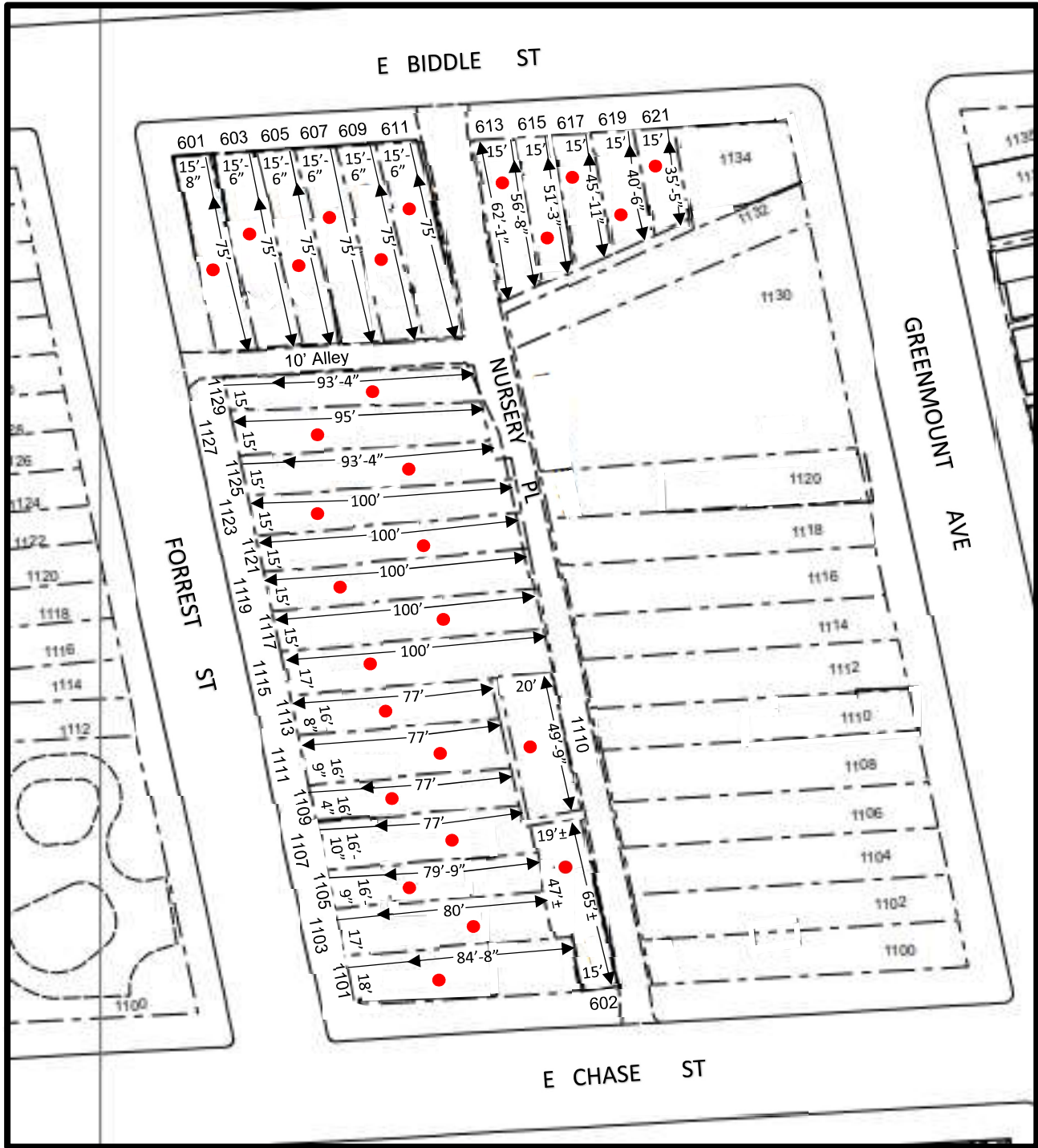
BLOCK 1168      LOTS 15-42

\_\_\_\_\_

MAYOR

\_\_\_\_\_

8/21/23



- |                 |                 |                 |
|-----------------|-----------------|-----------------|
| 601 E Biddle St | 621 E Biddle St | 1119 Forrest St |
| 603 E Biddle St | 1101 Forrest St | 1121 Forrest St |
| 605 E Biddle St | 1103 Forrest St | 1123 Forrest St |
| 607 E Biddle St | 1105 Forrest St | 1125 Forrest St |
| 609 E Biddle St | 1107 Forrest St | 1127 Forrest St |
| 611 E Biddle St | 1109 Forrest St | 1129 Forrest St |
| 613 E Biddle St | 1111 Forrest St | 602 E Chase St  |
| 615 E Biddle St | 1113 Forrest St | 1110 Nursery Pl |
| 617 E Biddle St | 1115 Forrest St |                 |
| 619 E Biddle St | 1117 Forrest St |                 |

Scale: 1" = 60'