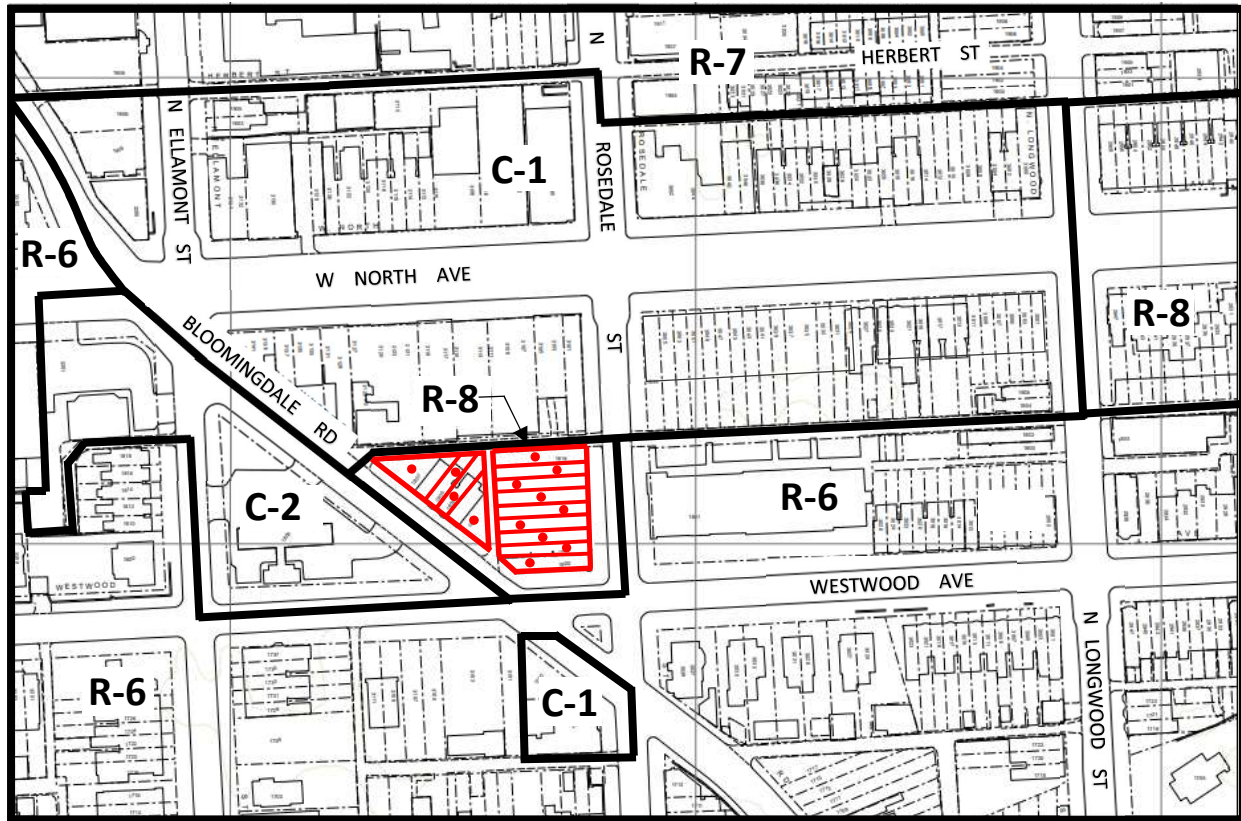
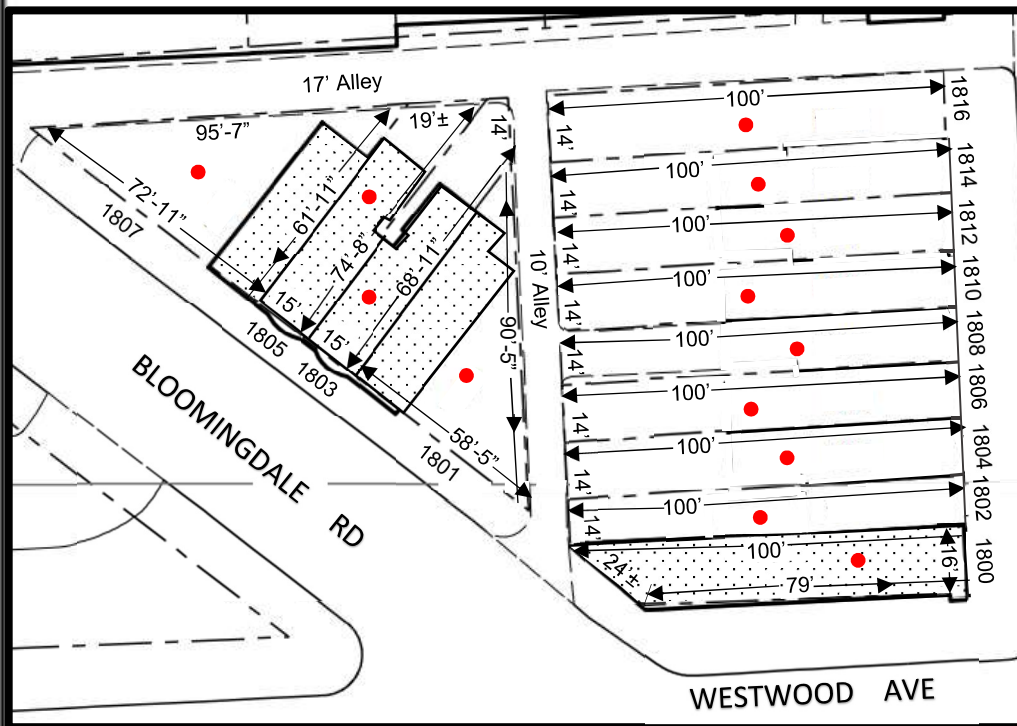


**SHEET NO. 43 OF THE ZONING MAP OF
THE ZONING CODE OF BALTIMORE CITY**



Scale: 1" = 200'



Scale: 1" = 50'

Note:

In Connection With The Properties Known As Nos. 1801-1807 BLOOMINGDALE ROAD AND 1800-1816 NORTH ROSEDALE STREET. The Applicant Wishes To Request The Rezoning Of The Aforementioned Properties From R-8 Zoning District to C-1 Zoning District, As Outlined In Red Above

WARD 15 SECTION 3
BLOCK 2427 LOTS 1-9 & 32-35

MAYOR

3-18-24

PRESIDENT CITY COUNCIL