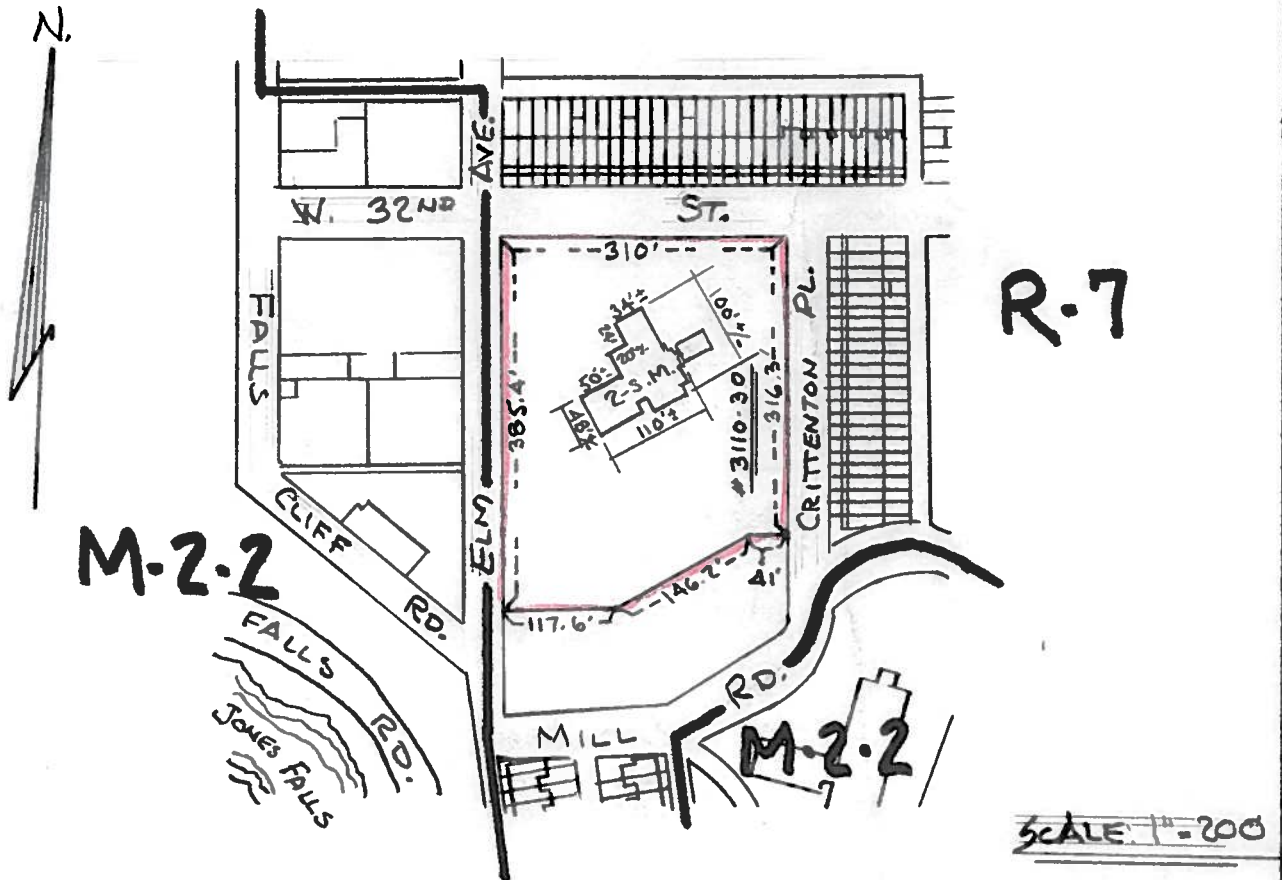


SHEET NO. 35 OF THE ZONING DISTRICT MAPS OF ARTICLE 30 OF THE BALTIMORE CITY CODE, 1966 EDITION, AS AMENDED BY ORDINANCE NO. 1051 APPROVED APRIL 20, 1971 TITLED "ZONING ORDINANCE."

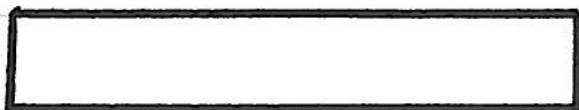


CONDITIONAL USE:

AREA OUTLINED IN RED TO BE USED FOR A  
MULTIPLE-FAMILY CONVERSION TO 15 DWELLING UNITS

FOR:

AB ASSOCIATES  
% AL BARRY  
ONE S. CALVERT ST. - SUITE 1150  
BALTIMORE, MD. 21202



MAYOR



PRESIDENT CITY COUNCIL

ADS