



1" = 100'

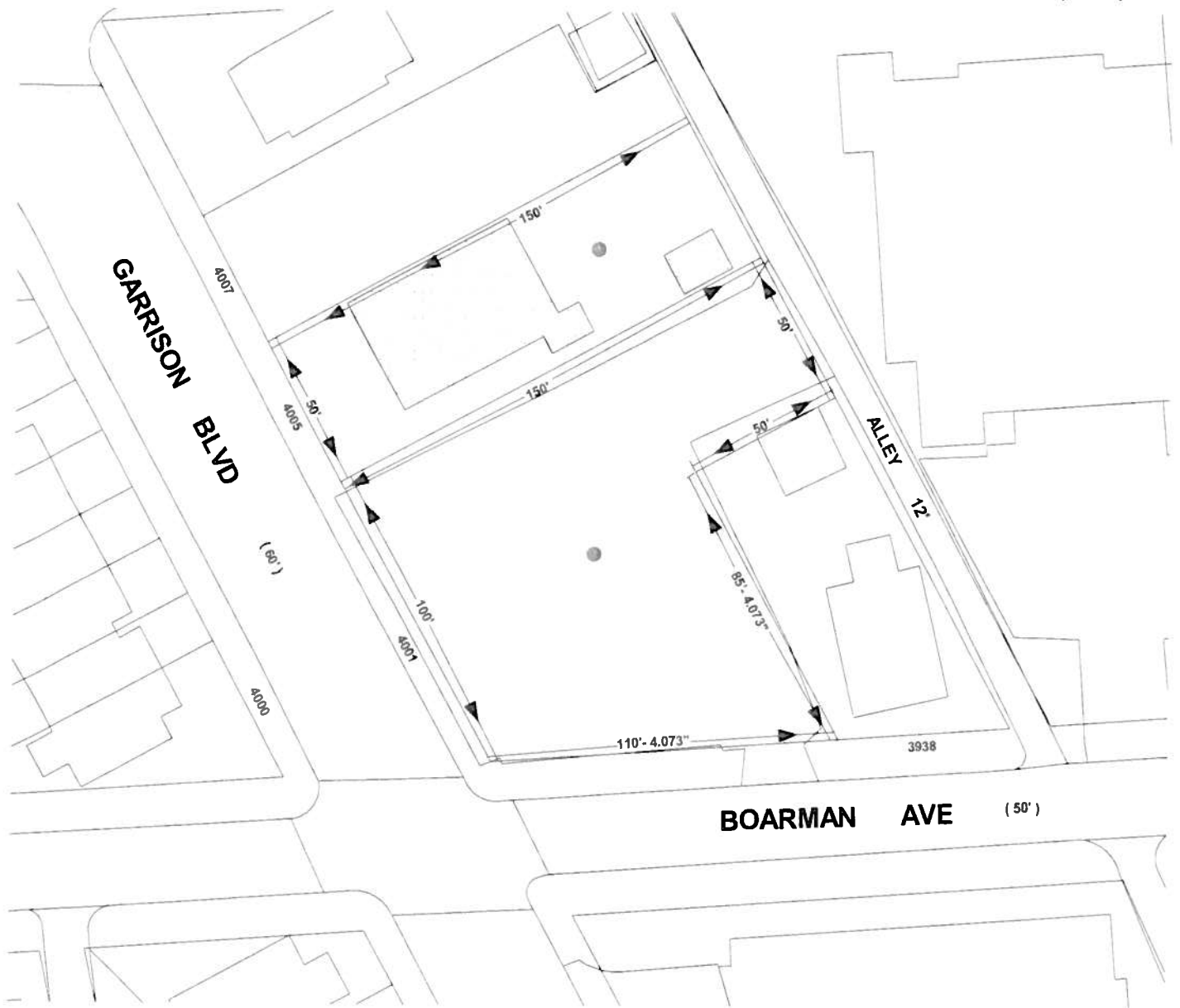
Note:
In Connection With Properties Known As
Nos. 4001 And 4005 GARRISON BOULEVARD.
The Applicant Wishes To Request
The Conditional Use Of The Aforementioned Properties As A
PARKING, OPEN OFF STREET AREA (PARKING LOT),
As Outlined In Red Above.

WARD - 15 SECTION - 21 BLOCK - 2949 LOTS - 2 & 3

MAYOR

PRESIDENT CITY COUNCIL

326



1" = 50'

4001 & 4005 GARRISON BOULEVARD

Sheet #2