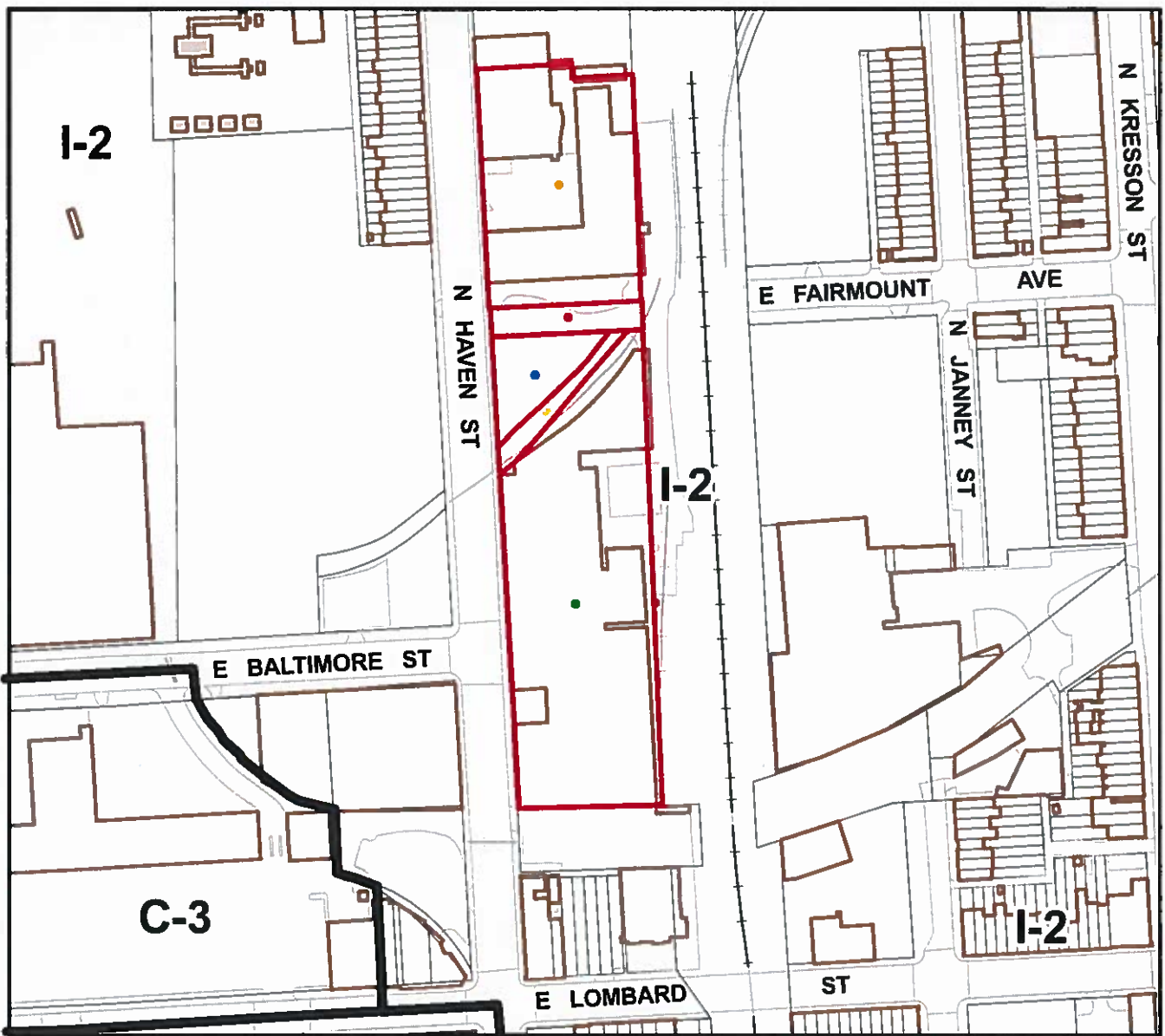


**SHEET NO. 58 OF THE ZONING MAP OF  
THE ZONING CODE OF BALTIMORE CITY**



Scale: 1" = 200'

**Note:** In Connection With Properties Known As:

- 101 N HAVEN STREET
- ES N HAVEN ST 767-6'N Of E LOMBARD ST
- 31 N HAVEN STREET
- ES N HAVEN ST 605-1'N Of E LOMBARD ST
- 1 N HAVEN STREET

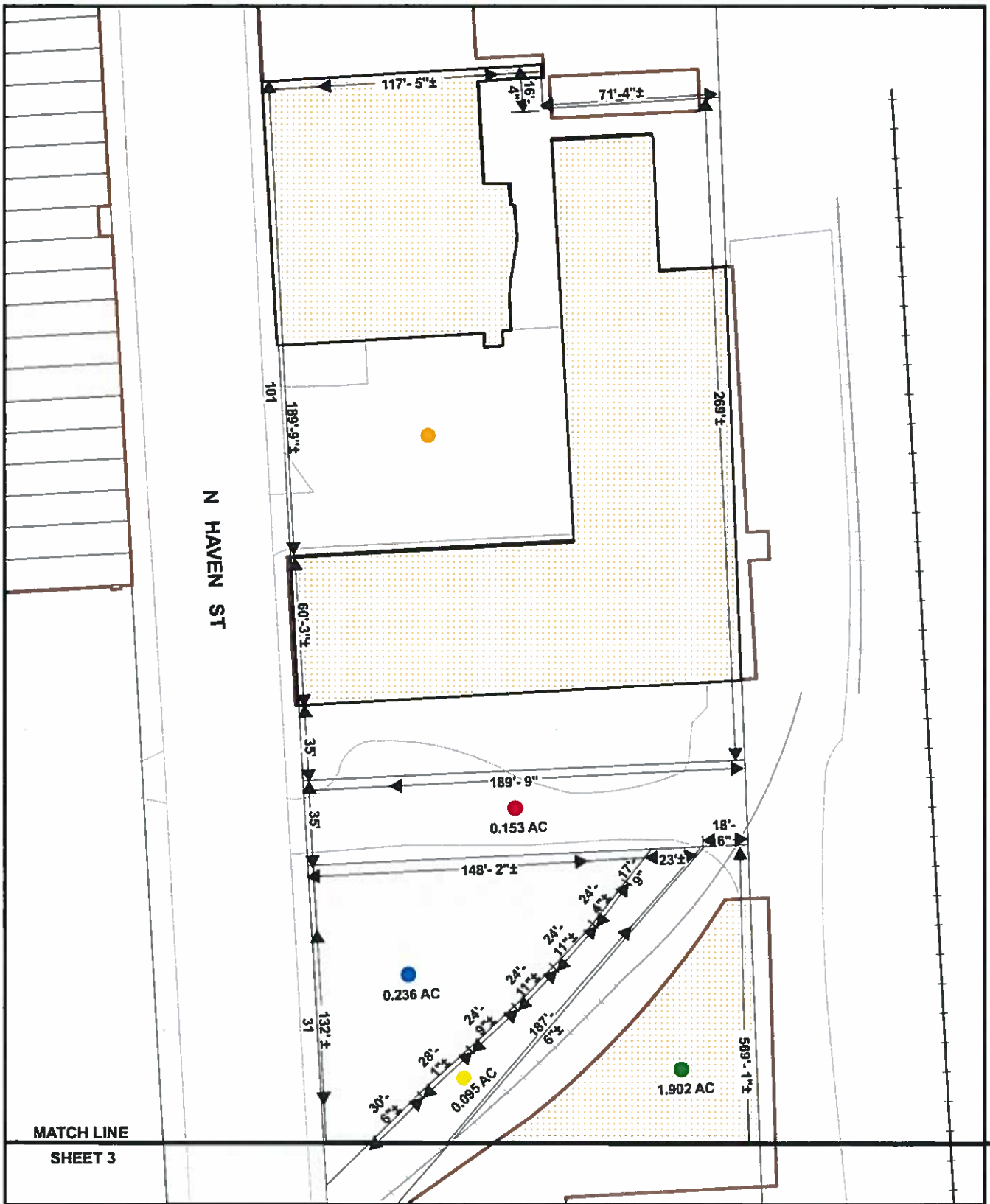
The Applicant Wishes To Request The Rezoning Of The Aforementioned Properties From I-2 Zoning to I-MU Zoning, As Shown In Various Color Circles Above.

|       |               |         |                  |
|-------|---------------|---------|------------------|
| WARD  | 26            | SECTION | 18               |
| BLOCK | 6254<br>6264A | LOTS    | 1<br>1, 2, 3 & 5 |

MAYOR

PRESIDENT CITY COUNCIL

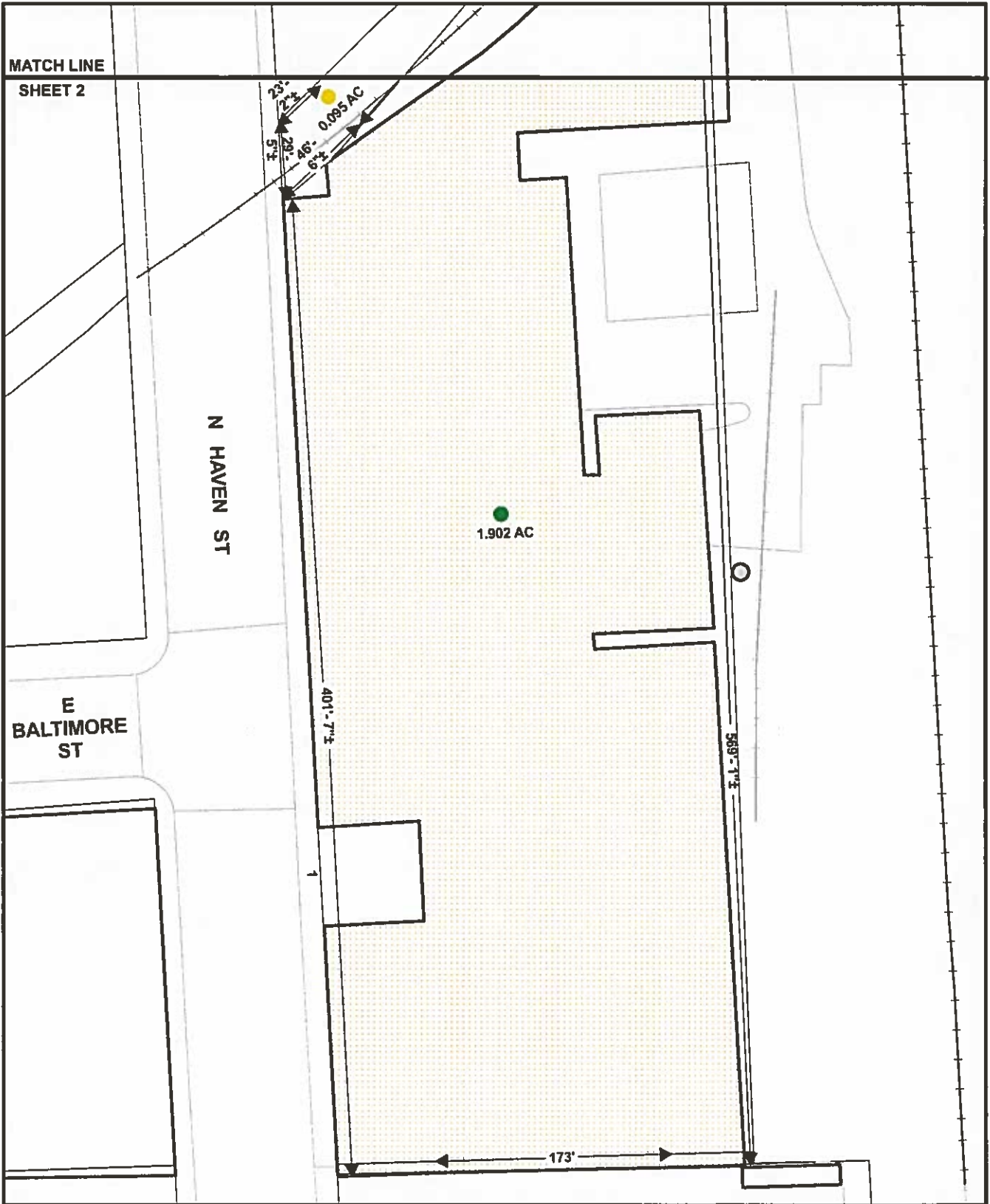
122



Scale: 1" = 60'

- 101 N HAVEN STREET
- ES N HAVEN ST 767-6'N Of E LOMBARD ST
- 31 N HAVEN STREET
- ES N HAVEN ST 605-1'N Of E LOMBARD ST
- 1 N HAVEN STREET

MATCH LINE  
SHEET 2



Scale: 1" = 60'

● 1 N HAVEN STREET